

NOTICES AND WARNINGS

**IMPORTANT NOTE:** All safety precautions and warnings, instructions, warranties and other collateral information is subject to change at the sole discretion of Yuneec. For the most up-to-date information please visit the corresponding product page at [www.Yuneec.com](http://www.Yuneec.com) or contact the nearest Yuneec office or authorized distributor.

The following special language terms are used throughout the product literature to indicate various levels of potential harm when operating this product:

**NOTICE:** Procedures, which if not properly followed, create a possibility of property damage and/or little to no possibility of injury.  
**CAUTION:** Procedures, which if not properly followed, create the probability of property damage and/or a possibility of serious injury.  
**WARNING:** Procedures, which if not properly followed, create the probability of property damage, collateral damage and/or serious injury or create a high probability of superficial injury.  
**WARNING:** Read the ENTIRE quick start guide and instruction manual to become familiar with the features of the product before operating. Failure to operate the product correctly can result in damage to the product, property and/or cause serious injury.  
**WARNING:** This is a sophisticated consumer product. It must be operated with caution and common sense, and requires some basic mechanical ability. Failure to operate this product in a safe and responsible manner could result in damage to the product, property and/or cause serious injury. This product is not intended for use by children without direct adult supervision. Do not use with incompatible components or alter this product in any way outside of the instructions provided by Yuneec. The quick start guide and instruction manual contain instructions for safety, operation and maintenance. It is essential to read and follow all the instructions and warnings prior to assembly, setup and/or use in order to operate the product correctly and avoid damage or serious injury.

AGE RECOMMENDATION: NOT FOR CHILDREN UNDER 14 YEARS. THIS IS NOT A TOY.

GENERAL SAFETY PRECAUTIONS AND WARNINGS

**WARNING:** Failure to use this product in the intended manner as described in the quick start guide and instruction manual can result in damage to the product, property and/or cause serious injury. A Radio Controlled (RC) multirotor aircraft, APV platform, drone, etc. is not a toy! If misused it can cause serious bodily harm and damage to property.  
**WARNING:** As the user of this product you are solely and wholly responsible for operating it in a manner that does not endanger yourself and others or result in damage to the product or the property of others. Keep your hands, face and other parts of your body away from the spinning propellers/rotor blades and other moving parts at all times. Keep items that could impact or become entangled away from the propellers/rotor blades including debris, parts, tools, loose clothing, etc.  
Always operate your aircraft in open areas that are free from people, vehicles and other obstructions. Never fly near or above crowds, airports or buildings.  
To ensure proper operation and safe flight performance never attempt to operate your aircraft nearby buildings or other obstructions that do not offer a clear view of the sky and can restrict GPS reception. Do not attempt to operate your aircraft in areas with potential magnetic and/or radio interference including areas nearby broadcast towers, power transmission stations, high voltage power lines, etc. Always keep a safe distance in all directions around your aircraft to avoid collisions and/or injury. This aircraft is controlled by a radio signal subject to interference from many sources outside your control. Interference can cause momentary loss of control.  
Do not attempt to operate your aircraft above 8000 feet (2438 meters) AMSL (Above Mean Sea Level). Do not attempt to operate your aircraft in winds that exceed 8–12 miles per hour (13–19 kilometers per hour).  
To ensure proper and safe operation of the automatic landing function in ‘Home’ mode you must turn your aircraft on in a position with at least 10 feet (approximately 3 meters) of clear and open space around it and achieve a proper GPS lock.  
Do not attempt to operate your aircraft with any worn and/or damaged components, parts, etc. (including, but not limited to, damaged propellers/rotor blades, old batteries, etc.).  
Never operate your aircraft in poor or severe weather conditions including heavy winds, precipitation, lightning, etc.  
Always operate your aircraft starting with a fully charged battery. Always land as soon as possible after the first level low voltage battery warning or land immediately after the second level low voltage battery warning (as indicated by the vibrations and audible alerts from the transmitter/personal ground station).

Always operate your aircraft when the voltage of the battery in the transmitter/personal ground station is in a safe range (as indicated by the battery charge status icon on the screen of the transmitter/personal ground station).  
Always keep the aircraft in clear line of sight and under control, and keep the transmitter/personal ground station powered on while the aircraft is powered on.  
Always move the throttle control stick down fully and turn off the motors in the event the propellers/rotor blades come into contact with any objects.  
Always allow components and parts to cool after use before touching them and before flying again.  
Always remove batteries after use and store/transport them per the corresponding guidelines.  
Avoid water exposure to all electronic components, parts, etc. not specifically designed and protected for use in water. Moisture causes damage to electronic components and parts.  
Never place any portion of the aircraft or any related accessories, components or parts in your mouth as doing so could cause serious injury or even death.  
Always keep chemicals, small parts and electronic components out of the reach of children.  
Carefully follow the instructions and warnings included with this aircraft and any related accessories, components or parts (including, but not limited to, chargers, rechargeable batteries, etc.).  
**CAUTION:** The electronic speed controls (ESCs) installed in the Q500 are not compatible with any other product, and the Q500 is not compatible with any other ESCs. Use of any other ESCs in the Q500 will cause a crash, which may result in damage to the product, property and/or cause serious injury.

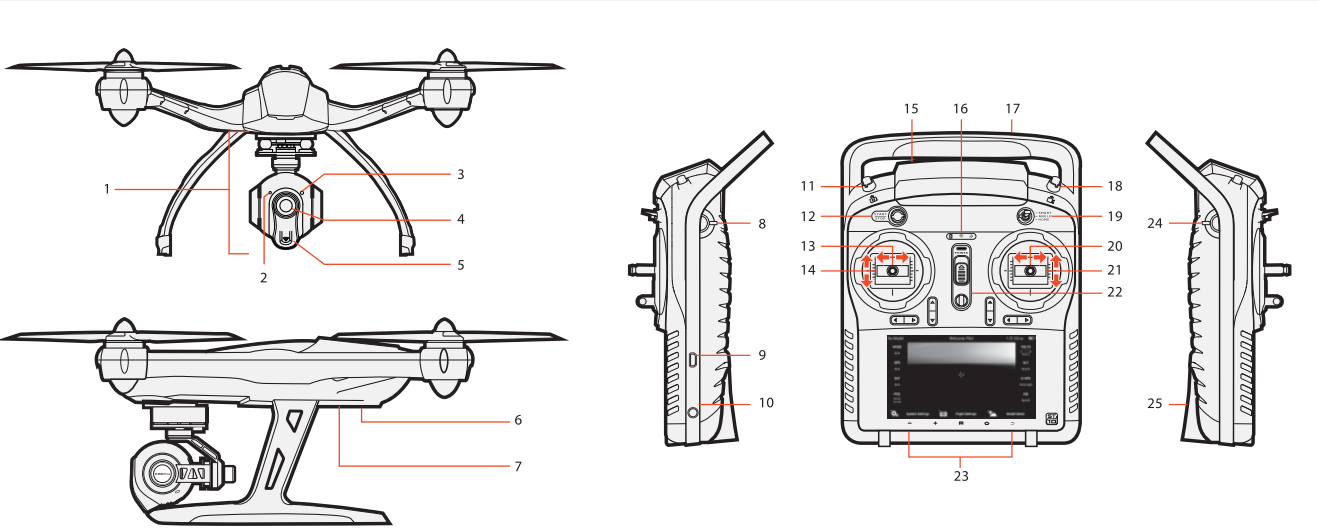
BATTERY WARNINGS AND USAGE GUIDELINES

**WARNING:** Lithium Polymer (LiPo) batteries are significantly more volatile than alkaline, NiCd or NiMH batteries. All instructions and warnings must be followed exactly to prevent property damage and/or serious injury as the mishandling of LiPo batteries can result in fire. By handling, charging or using the included LiPo battery you assume all risks associated with LiPo batteries. If you do not agree with these conditions please return the complete product in new, unused condition to the place of purchase immediately.

You must always charge the LiPo battery in a safe, well-ventilated area away from flammable materials. Never charge the LiPo battery unattended at any time. When charging the battery you must always remain in constant observation to monitor the charging process and react immediately to any potential problems that may occur.  
After flying/discharging the LiPo battery you must allow it to cool to ambient/room temperature before recharging.  
To charge the LiPo battery you must use only the included charger or a suitably compatible LiPo battery charger. Failure to do so may result in a fire causing property damage and/or serious injury.  
If at any time the LiPo battery begins to balloon or swell, discontinue charging or discharging immediately. Quickly and safely disconnect the battery, then place it in a safe, open area away from flammable materials to observe it for at least 15 minutes. Continuing to charge or discharge a battery that has begun to balloon or swell can result in a fire. A battery that has ballooned or swollen even a small amount must be removed from service completely.  
Do not over-discharge the LiPo battery. Discharging the battery too low can cause damage to the battery resulting in reduced power, flight duration or failure of the battery entirely. LiPo cells should not be discharged to below 3.0V each under load.  
Store the LiPo battery at room temperature and in a dry area for best results.  
When charging, transporting or temporarily storing the LiPo battery the temperature range should be from approximately 40–120° F (5–49° C). Do not store the battery or aircraft in a hot garage, car or direct sunlight. If stored in a hot garage or car the battery can be damaged or even catch fire.  
Never leave batteries, chargers and power supplies unattended during use.  
Never attempt to charge low voltage, ballooned/swollen, damaged or wet batteries.  
Never allow children under 14 years of age to charge batteries.  
Never charge a battery if any of the wire leads have been damaged or shorted.  
Never attempt to disassemble the battery, charger or power supply.  
Never drop batteries, chargers or power supplies.  
Always inspect the battery, charger and power supply before charging.  
Always ensure correct polarity before connecting batteries, chargers and power supplies.  
Always disconnect the battery after charging.  
Always terminate all processes if the battery, charger or power supply malfunctions.

Q500  
TYPHOON+  
QUICK START GUIDE

OVERVIEW



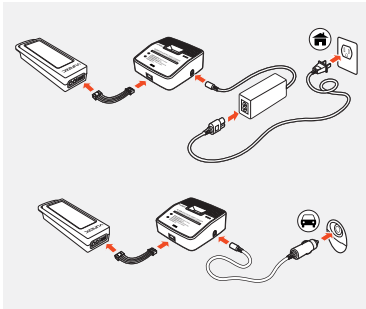
- |                                    |   |   |  |
|------------------------------------|---|---|--|
| 1 CGO2+ Gimbal Camera              | 10 Audio/Earphone Jack  | 17 2.4GHz Antenna (located inside the handle)   | 24 CGO2+ Pitch Angle/Position Control Slider |
| 2 Camera Microphone                | 11 Take Still Photo Button                                    | 18 Start/Stop Video Recording Button  |  |
| 3 Camera LED Status Indicator      | 12 Start/Stop Motors Button                                   | 19 Flight Mode Selection Switch   | 25 SD Card Slot (located under the battery)  |
| 4 Camera Lens                      | 13 Rudder/Yaw Control (for Mode 2 and Mode 1)                 | 20 Aileron/Roll Control (Mode 2 and Mode 1)   |  |
| 5 5.8GHz Antenna                   | 14 Throttle/Altitude Control (for Mode 2)                     | 21 Elevator/Pitch Control (Mode 2)  |  |
| 6 Power Switch                     | 15 5.8GHz Antenna (located inside the case)                   | 22 Throttle/Altitude Control (Mode 1)   |  |
| 7 Main LED Status Indicator        | 16 Status Indicators (for ST10+ battery, 5.8GHz WiFi and GPS) | 23 Volume and Navigation Touch-Activated Buttons Volume Down/VolumeUp/Menu/Home/Back) |  |
| 8 Proportional Control Rate Slider |   |   |  |
| 9 USB Connector/Charging Port      |   |   |  |

#### IMPORTANT NOTE:

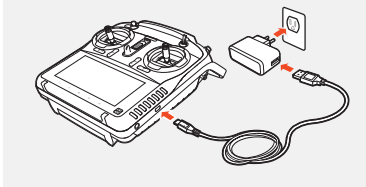
This Quick Start Guide is NOT intended to replace the content included in the instruction manual. You should read the instruction manual completely before proceeding.

#### 1. CHARGE THE BATTERIES

Power the SC3500-3 charger from a 100-240V AC outlet using the AC adapter/power supply, or from a 12V DC accessory socket/cigarette lighter receptacle in a vehicle using the included adapter.



A green blinking LED indicates the charger is powered on and ready to charge, and a red blinking LED indicates the battery is charging. It will take approximately 2 hours to charge a fully discharged (not over-discharged) battery.



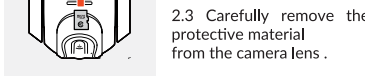
**WARNING:** All instructions and warnings must be followed exactly to prevent property damage and/or serious injury as the mishandling of Li-ion/LiPo batteries can result in fire.

#### 2. PREPARE THE CGO2+

2.1 Remove the cover/lock from the rear of the CGO2+ by carefully sliding it backward.

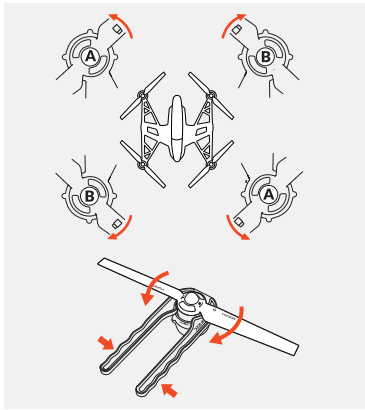
#### 2.2 Insert the included 8GB card or any Class 10 microSD card from 4GB to 128GB.

2.3 Carefully remove the protective material from the camera lens.



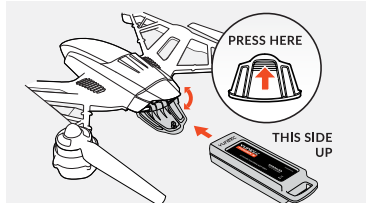
#### 3. INSTALL THE PROPELLERS

Install the corresponding A and B propellers in the positions shown by rotating them per the illustration and until they're secure. It may also be helpful to use the included tool to hold the motors while installing the propellers.



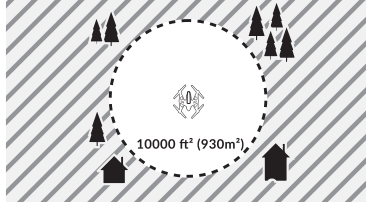
**CAUTION:** Do not over-tighten the propellers when using the tool.

#### 4. INSTALL THE BATTERY

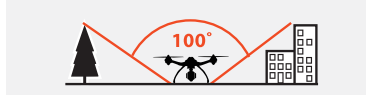


**NOTE:** If the door does not close, the battery is not inserted far enough to engage the connector properly.

#### 5. PLACEMENT BEFORE TAKEOFF



**WARNING:** Always operate the Q500 in open areas (approximately 10000 square feet/930 square meters or more) that are free from people, vehicles, trees and other obstructions. Never fly near or above crowds, airports or buildings.



Never attempt to operate the Q500 nearby tall buildings/obstructions that do not offer a clear view of the sky (a minimum clearance of 100°).

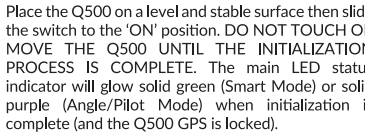
Be sure to place the Q500 on a level and stable surface before powering ON the Controller and Aircraft.



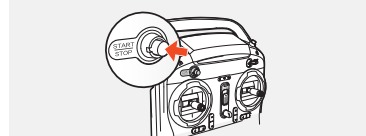
**NOTE:** If the door does not close, the battery is not inserted far enough to engage the connector properly.

#### 6. POWERING ON/OFF

**NOTE:** ALWAYS turn the ST10+ on and allow it to boot up BEFORE turning the Q500 on (and ALWAYS turn the Q500 off BEFORE turning off the ST10+).



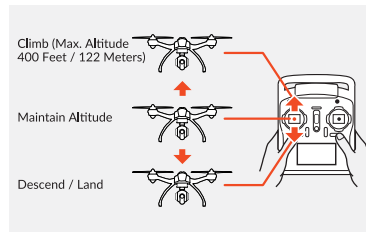
#### 7. STARTING/STOPPING THE MOTORS



Step back approximately 26 feet (8 meters) behind the Q500. Press and hold the red START/STOP button for about 3 seconds to start, and about 2 seconds to stop the motors.

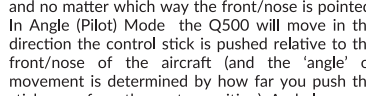
#### 8. FLIGHT CONTROLS

To takeoff, slowly raise the left-hand stick to slightly above the center position. The Q500 will takeoff and climb slowly (or raise the stick further until it does). Allow the stick to return to the center position when the Q500 reaches the desired altitude.

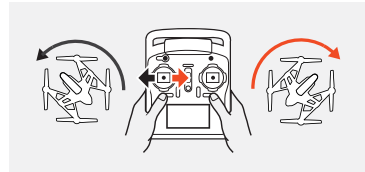


#### 9. CONTROL RATE SLIDER

Sets the overall climb/descend and directional control rates. Use the turtle position for the lowest control rates (best for first-time pilots and when flying between 5000 feet and 8000 feet Above Mean Sea Level). Use the rabbit position for the highest control rates (best for experienced pilots and only when flying below 5000 feet AMSL).



**IMPORTANT NOTE:** If at any time during flight you feel like the Q500 is drifting out of/beyond your control, simply release both control sticks. The Q500 will automatically self-level and will even hold its position (with a suitable GPS signal/lock) when both control sticks are centered. You can also activate Home Mode so the Q500 automatically flies itself back to the home point and lands.



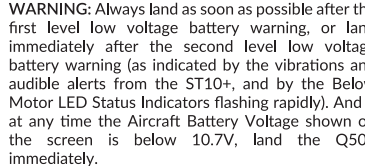
**IMPORTANT NOTE:** If at any time during flight you feel like the Q500 is drifting out of/beyond your control, simply release both control sticks. The Q500 will automatically self-level and will even hold its position (with a suitable GPS signal/lock) when both control sticks are centered. You can also activate Home Mode so the Q500 automatically flies itself back to the home point and lands.

#### 10. SELECTING A FLIGHT MODE

There are two ways to land the Q500:

1) Position the Q500 above the area where you would like to land. Slowly lower the left-hand stick to below the center position. The Q500 will descend slowly and land. After the Q500 lands, press and hold the red START/STOP button for approximately two (2) seconds to stop the motors.

2) Activate Home Mode and the Q500 will automatically fly itself back to the home point and will land within a 10 foot (3 meter) diameter circle around it.



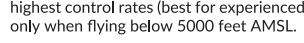
#### 11. FLIGHT MODES

**SMART MODE**

When the Flight Mode Selection Switch is the top position the Q500 will be in Smart Mode. Although we recommend learning to fly the Q500 in Angle (Pilot) Mode.

#### 12. FOLLOW ME

The Follow Me feature the Q500 TYPHOON+ to follow the pilot, adjusting its location to the location of the ST10+. The Follow Me feature is enabled when the number of connected satellites is 6 or more. When Follow Me is active the Q500's Main LED Status Indicator will blink white every three seconds. If the Q500's Main LED Status Indicator remains solid green, the Follow Me feature is not enabled.



**WARNING:** Smart Mode only works when the Q500 has a suitable GPS signal/lock. If you take off in Smart Mode and the Q500 loses GPS signal/lock it will switch to Angle (Pilot) Mode automatically. This is why we strongly recommend learning to fly in Angle (Pilot) Mode as soon as possible. Otherwise, if you lose GPS signal/lock and are not able to properly control the Q500 in Angle (Pilot) Mode the aircraft may crash or even 'fly away'.

#### 13. HOME MODE

When the Flight Mode Selection Switch is in the bottom position the Q500 will be in Home (also known as Return to Home) Mode.

#### 14. ANGLE (PILOT) MODE

When the Flight Mode Selection Switch is the middle position the Q500 will be in Angle (also known as Pilot) Mode.

**IMPORTANT NOTE:** Crash damage and 'fly aways' are NOT covered under warranty.

#### 15. AFTER LANDING

ALWAYS turn off the Q500 BEFORE turning off the ST10+. Then remove the battery from the Q500 and allow it to cool to ambient/room temperature before recharging.

#### 16. FLIGHT MODES

**SMART MODE**

When the Flight Mode Selection Switch is the top position the Q500 will be in Smart Mode. Although we recommend learning to fly the Q500 in Angle (Pilot) Mode.

#### 17. FOLLOW ME

The Follow Me feature the Q500 TYPHOON+ to follow the pilot, adjusting its location to the location of the ST10+. The Follow Me feature is enabled when the number of connected satellites is 6 or more. When Follow Me is active the Q500's Main LED Status Indicator will blink white every three seconds. If the Q500's Main LED Status Indicator remains solid green, the Follow Me feature is not enabled.

#### 18. HOME MODE

When the Flight Mode Selection Switch is in the bottom position the Q500 will be in Home (also known as Return to Home) Mode.

#### 19. ANGLE (PILOT) MODE

When the Flight Mode Selection Switch is the middle position the Q500 will be in Angle (also known as Pilot) Mode.

#### 20. AFTER LANDING

ALWAYS turn off the Q500 BEFORE turning off the ST10+. Then remove the battery from the Q500 and allow it to cool to ambient/room temperature before recharging.

#### 21. FLIGHT MODES

**SMART MODE**

When the Flight Mode Selection Switch is the top position the Q500 will be in Smart Mode. Although we recommend learning to fly the Q500 in Angle (Pilot) Mode.

#### 22. FOLLOW ME

The Follow Me feature the Q500 TYPHOON+ to follow the pilot, adjusting its location to the location of the ST10+. The Follow Me feature is enabled when the number of connected satellites is 6 or more. When Follow Me is active the Q500's Main LED Status Indicator will blink white every three seconds. If the Q500's Main LED Status Indicator remains solid green, the Follow Me feature is not enabled.

#### 23. HOME MODE

When the Flight Mode Selection Switch is in the bottom position the Q500 will be in Home (also known as Return to Home) Mode.

#### 24. ANGLE (PILOT) MODE

When the Flight Mode Selection Switch is the middle position the Q500 will be in Angle (also known as Pilot) Mode.

#### 25. AFTER LANDING

ALWAYS turn off the Q500 BEFORE turning off the ST10+. Then remove the battery from the Q500 and allow it to cool to ambient/room temperature before recharging.

#### 26. FLIGHT MODES

**SMART MODE**

When the Flight Mode Selection Switch is the top position the Q500 will be in Smart Mode. Although we recommend learning to fly the Q500 in Angle (Pilot) Mode.

#### 27. FOLLOW ME

The Follow Me feature the Q500 TYPHOON+ to follow the pilot, adjusting its location to the location of the ST10+. The Follow Me feature is enabled when the number of connected satellites is 6 or more. When Follow Me is active the Q500's Main LED Status Indicator will blink white every three seconds. If the Q500's Main LED Status Indicator remains solid green, the Follow Me feature is not enabled.

#### 28. HOME MODE

When the Flight Mode Selection Switch is in the bottom position the Q500 will be in Home (also known as Return to Home) Mode.

#### 29. ANGLE (PILOT) MODE

When the Flight Mode Selection Switch is the middle position the Q500 will be in Angle (also known as Pilot) Mode.

#### 30. AFTER LANDING

ALWAYS turn off the Q500 BEFORE turning off the ST10+. Then remove the battery from the Q500 and allow it to cool to ambient/room temperature before recharging.

#### 31. FLIGHT MODES

**SMART MODE**

When the Flight Mode Selection Switch is the top position the Q500 will be in Smart Mode. Although we recommend learning to fly the Q500 in Angle (Pilot) Mode.

#### 32. FOLLOW ME

The Follow Me feature the Q500 TYPHOON+ to follow the pilot, adjusting its location to the location of the ST10+. The Follow Me feature is enabled when the number of connected satellites is 6 or more. When Follow Me is active the Q500's Main LED Status Indicator will blink white every three seconds. If the Q500's Main LED Status Indicator remains solid green, the Follow Me feature is not enabled.

#### 33. HOME MODE

When the Flight Mode Selection Switch is in the bottom position the Q500 will be in Home (also known as Return to Home) Mode.

#### 34. ANGLE (PILOT) MODE

When the Flight Mode Selection Switch is the middle position the Q500 will be in Angle (also known as Pilot) Mode.

#### 35. AFTER LANDING

ALWAYS turn off the Q500 BEFORE turning off the ST10+. Then remove the battery from the Q500 and allow it to cool to ambient/room temperature before recharging.

#### 36. FLIGHT MODES

**SMART MODE**

When the Flight Mode Selection Switch is the top position the Q500 will be in Smart Mode. Although we recommend learning to fly the Q500 in Angle (Pilot) Mode.

#### 37. FOLLOW ME

The Follow Me feature the Q500 TYPHOON+ to follow the pilot, adjusting its location to the location of the ST10+. The Follow Me feature is enabled when the number of connected satellites is 6 or more. When Follow Me is active the Q500's Main LED Status Indicator will blink white every three seconds. If the Q500's Main LED Status Indicator remains solid green, the Follow Me feature is not enabled.

#### 38. HOME MODE

When the Flight Mode Selection Switch is in the bottom position the Q500 will be in Home (also known as Return to Home) Mode.

#### 39. ANGLE (PILOT) MODE

When the Flight Mode Selection Switch is the middle position the Q500 will be in Angle (also known as Pilot) Mode.

#### 40. AFTER LANDING

ALWAYS turn off the Q500 BEFORE turning off the ST10+. Then remove the battery from the Q500 and allow it to cool to ambient/room temperature before recharging.

#### 41. FLIGHT MODES

**SMART MODE**

When the Flight Mode Selection Switch is the top position the Q500 will be in Smart Mode. Although we recommend learning to fly the Q500 in Angle (Pilot) Mode.

#### 42. FOLLOW ME

The Follow Me feature the Q500 TYPHOON+ to follow the pilot, adjusting its location to the location of the ST10+. The Follow Me feature is enabled when the number of connected satellites is 6 or more. When Follow Me is active the Q500's Main LED Status Indicator will blink white every three seconds. If the Q500's Main LED Status Indicator remains solid green, the Follow Me feature is not enabled.

#### 43. HOME MODE

When the Flight Mode Selection Switch is in the bottom position the Q500 will be in Home (also known as Return to Home) Mode.

#### 44. ANGLE (PILOT) MODE

When the Flight Mode Selection Switch is the middle position the Q500 will be in Angle (also known as Pilot) Mode.

#### 45. AFTER LANDING

ALWAYS turn off the Q500 BEFORE turning off the ST10+. Then remove the battery from the Q500 and allow it to cool to ambient/room temperature before recharging.

#### 46. FLIGHT MODES

**SMART MODE**

When the Flight Mode Selection Switch is the top position the Q500 will be in Smart Mode. Although we recommend learning to fly the Q500 in Angle (Pilot) Mode.

#### 47. FOLLOW ME

The Follow Me feature the Q500 TYPHOON+ to follow the pilot, adjusting its location to the location of the ST10+. The Follow Me feature is enabled when the number of connected satellites is 6 or more. When Follow Me is active the Q500's Main LED Status Indicator will blink white every three seconds. If the Q500's Main LED Status Indicator remains solid green, the Follow Me feature is not enabled.

#### 48. HOME MODE

When the Flight Mode Selection Switch is in the bottom position the Q500 will be in Home (also known as Return to Home) Mode.

#### 49. ANGLE (PILOT) MODE

When the Flight Mode Selection Switch is the middle position the Q500 will be in Angle (also known as Pilot) Mode.

#### 50. AFTER LANDING

ALWAYS turn off the Q500 BEFORE turning off the ST10+. Then remove the battery from the Q500 and allow it to cool to ambient/room temperature before recharging.

#### 51. FLIGHT MODES

**SMART MODE**

When the Flight Mode Selection Switch is the top position the Q500 will be in Smart Mode. Although we recommend learning to fly the Q500 in Angle (Pilot) Mode.

#### 52. FOLLOW ME

The Follow Me feature the Q500 TYPHOON+ to follow the pilot, adjusting its location to the location of the ST10+. The Follow Me feature is enabled when the number of connected satellites is 6 or more. When Follow Me is active the Q500's Main LED Status Indicator will blink white every three seconds. If the Q500's Main LED Status Indicator remains solid green, the Follow Me feature is not enabled.

#### 53. HOME MODE

When the Flight Mode Selection Switch is in the bottom position the Q500 will be in Home (also known as Return to Home) Mode.

#### 54. ANGLE (PILOT) MODE

When the Flight Mode Selection Switch is the middle position the Q500 will be in Angle (also known as Pilot) Mode.

#### 55. AFTER LANDING

ALWAYS turn off the Q500 BEFORE turning off the ST10+. Then remove the battery from the Q500 and allow it to cool to ambient/room temperature before recharging.

#### 56. FLIGHT MODES

**SMART MODE**

When the Flight Mode Selection Switch is the top position the Q500 will be in Smart Mode. Although we recommend learning to fly the Q500 in Angle (Pilot) Mode.

#### 57. FOLLOW ME

The Follow Me feature the Q500 TYPHOON+ to follow the pilot, adjusting its location to the location of the ST10+. The Follow Me feature is enabled when the number of connected satellites is 6 or more. When Follow Me is active the Q500's Main LED Status Indicator will blink white every three seconds. If the Q500's Main LED Status Indicator remains solid green, the Follow Me feature is not enabled.

#### 58. HOME MODE

When the Flight Mode Selection Switch is in the bottom position the Q500 will be in Home (also known as Return to Home) Mode.

#### 59. ANGLE (PILOT) MODE

When the Flight Mode Selection Switch is the middle position the Q500 will be in Angle (also known as Pilot) Mode.

#### 60. AFTER LANDING

ALWAYS turn off the Q500 BEFORE turning off the ST10+. Then remove the battery from the Q500 and allow it to cool to ambient/room temperature before recharging.

#### 61. FLIGHT MODES

**SMART MODE**

When the Flight Mode Selection Switch is the top position the Q500 will be in Smart Mode. Although we recommend learning to fly the Q500 in Angle (Pilot) Mode.

#### 62. FOLLOW ME

The Follow Me feature the Q500 TYPHOON+ to follow the pilot, adjusting its location to the location of the ST10+. The Follow Me feature is enabled when the number of connected satellites is 6 or more. When Follow Me is active the Q500's Main LED Status Indicator will blink white every three seconds. If the Q500's Main LED Status Indicator remains solid green, the Follow Me feature is not enabled.

#### 63. HOME MODE

When the Flight Mode Selection Switch is in the bottom position the Q500 will be in Home (also known as Return to Home) Mode.

#### 64. ANGLE (PILOT) MODE

When the Flight Mode Selection Switch is the middle position the Q500 will be in Angle (also known as Pilot) Mode.

#### 65. AFTER LANDING

ALWAYS turn off the Q500 BEFORE turning off the ST10+. Then remove the battery from the Q500 and allow it to cool to ambient/room temperature before recharging.

#### 66. FLIGHT MODES

**SMART MODE**

When the Flight Mode Selection Switch is the top position the Q500 will be in Smart Mode. Although we recommend learning to fly the Q500 in Angle (Pilot) Mode.

#### 67. FOLLOW ME

The Follow Me feature the Q500 TYPHOON+ to follow the pilot, adjusting its location to the location of the ST10+. The Follow Me feature is enabled when the number of connected satellites is 6 or more. When Follow Me is active the Q500's Main LED Status Indicator will blink white every three seconds. If the Q500's Main LED Status Indicator remains solid green, the Follow Me feature is not enabled.

#### 68. HOME MODE

When the Flight Mode Selection Switch is in the bottom position the Q500 will be in Home (also known as Return to Home) Mode.

#### 69. ANGLE (PILOT) MODE

When the Flight Mode Selection Switch is the middle position the Q500 will be in Angle (also known as Pilot) Mode.

#### 70. AFTER LANDING

ALWAYS turn off the Q500 BEFORE turning off the ST10+. Then remove the battery from the Q500 and allow it to cool to ambient/room temperature before recharging.

#### 71. FLIGHT MODES

**SMART MODE**

When the Flight Mode Selection Switch is the top position the Q500 will be in Smart Mode. Although we recommend learning to fly the Q500 in Angle (Pilot) Mode.

#### 72. FOLLOW ME

The Follow Me feature the Q500 TYPHOON+ to follow the pilot, adjusting its location to the location of the ST10+. The Follow Me feature is enabled when the number of connected satellites is 6 or more. When Follow Me is active the Q500's Main LED Status Indicator will blink white every three seconds. If the Q500's Main LED Status Indicator remains solid green, the Follow Me feature is not enabled.

#### 73. HOME MODE

When the Flight Mode Selection Switch is in the bottom position the Q500 will be in Home (also known as Return to Home) Mode.

#### 74. ANGLE (PILOT) MODE

When the Flight Mode Selection Switch is the middle position the Q500 will be in Angle (also known as Pilot) Mode.

#### 75. AFTER LANDING

ALWAYS turn off the Q500 BEFORE turning off the ST10+. Then remove the battery from the Q500 and allow it to cool to ambient/room temperature before recharging.

#### 76. FLIGHT MODES

**SMART MODE**

When the Flight Mode Selection Switch is the top position the Q500 will be in Smart Mode. Although we recommend learning to fly the Q500 in Angle (Pilot) Mode.

#### 77. FOLLOW ME

The Follow Me feature the Q500 TYPHOON+ to follow the pilot, adjusting its location to the location of the ST10+. The Follow Me feature is enabled when the number of connected satellites is 6 or more. When Follow Me is active the Q500's Main LED Status Indicator will blink white every three seconds. If the Q500's Main LED Status Indicator remains solid green, the Follow Me feature is not enabled.

#### 78. HOME MODE

When the Flight Mode Selection Switch is in the bottom position the Q500 will be in Home (also known as Return to Home) Mode.

#### 79. ANGLE (PILOT) MODE

When the Flight Mode Selection Switch is the middle position the Q500 will be in Angle (also known as Pilot) Mode.

#### 80. AFTER LANDING

ALWAYS turn off the Q500 BEFORE turning off the ST10+. Then remove the battery from the Q500 and allow it to cool to ambient/room temperature before recharging.

#### 81. FLIGHT MODES

**SMART MODE**

When the Flight Mode Selection Switch is the top position the Q500 will be in Smart Mode. Although we recommend learning to fly the Q500 in Angle (Pilot) Mode.