

DOWNLOAD SECUREPYRO APP



EN: 100024

DISCLAIMER

The use of the Android or iOS App called SecurePyro and SecurePyro devices are subject to acceptance of these General Conditions of Use. Before using the App and SecurePyro devices, the user must explicitly accept the Conditions, such acceptance is complete and indivisible.

WARNING!

The user manual must be read before each operation on the product. The manual provided is an integral and essential part of the product and should not be separated from it.

WARNING!

The developer declines all responsibility for damage caused to people, animals or objects due to errors or failure to comply the manual provided.

INTENDED USE BY THE DEVELOPER

SecurePyro devices are designed and built to be used in open environments and away from sources of heat and humidity. They are not suitable for use with igniters other than those recommended by the developer.

SecurePyro devices are designed to ensure maximum user safety without ever forgetting common sense and maximum attention.

1. SecurePyro can not be held responsible for the use of the device for purposes other than those permitted by law;
2. SecurePyro is intended for igniting fireworks. The security in the use of SecurePyro products also depends on the correct execution of the rules of the single kind of fireworks, having special regard to those that may be sensitive to electromagnetic field chemical composition;
3. SecurePyro is not responsible for any accidental ignition of an igniter due to any cause (electrostatic charges, malfunction, incorrect use of the device).
4. Only use products perfectly intact in their entirety. In case of suspected malfunction do not use the SecurePyro products and do not try to make do-it-yourself repairs. The use of a non-intact and fully functional product can be harmful for the health of the pyrotechnic, his assistants and spectators;
5. All the clamps and the input must be periodically cleaned from the dirt that could be deposited;
6. SecurePyro disclaims any liability (even in case of negligence) for direct, indirect or consequential damages that could result from improper use of the device;
7. The device is an electronic device therefore subject to defects or problems due to production defects or improper use of the device, therefore maximum attention is always recommended;
8. SecurePyro is not responsible for failure to observe good technique and common sense when using the device;
9. DO NOT OPEN THE SECUREPYRO DEVICES FOR ANY REASON, the precision mechanics and electronics of which they are composed require experience and instrumentation. The simple opening of the single device by unauthorized parties causes the loss of the warranty.

Use of the device implies acceptance of this contract and releases SecurePyro from any civil or criminal liability due to its use.

For more information, details and updated disclaimer visit our website: www.securepyro.it

SECUREPYRO

www.securepyro.it

info@securepyro.it



European CE Notice Certification and Safety Approval Information This product is CE marked according to the RED directive 2014/53/UE and is free use in all the EU countries.

Users are not permitted to make any changes or modifications to the device. Modifications which are not expressly approved by the producer invalidate the warranty card.

For further information, please go to our website:

www.securepyro.it

Download complete user manual and updated informations about warranty and responsibility disclosure visit:
www.securepyro.it

SECUREPYRO



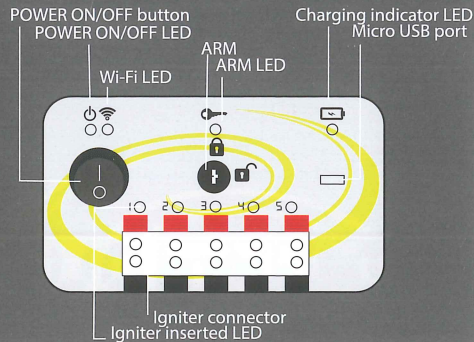
WIFI REMOTIZED IGNITOR



QUICK GUIDE Rev 1.1



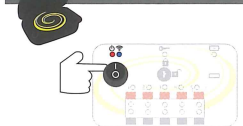
POCKETPYRO DESCRIPTION



LED

- | | |
|---|--|
| <ul style="list-style-type: none"> Power on
Red LED steady on Low battery
Red LED flashing Recharge battery
Red LED off Device connected to the app
Blue LED steady on Device not connected
Blue LED flashing | <ul style="list-style-type: none"> Armed device
Green LED steady on Error
Green LED flashing Unarmed device
Green LED off Device in charge
Red LED steady on Full charge
Red LED off |
|---|--|

POWER ON



- Red LED steady on
- Blue LED flashing

NB: do not power on if ARM is activated

POWER OFF



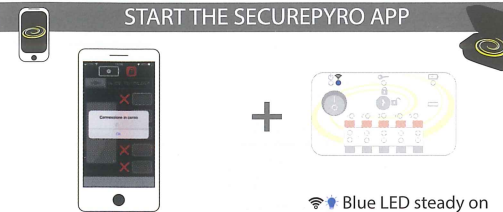
- LEDS off

CONNECT YOUR SMARTPHONE

Settings → Wifi → **PocketPyro_5xxx**
PW "1234567890"
(customizable from App)
Blue LED flashing

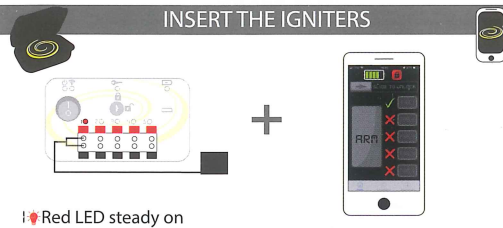


START THE SECUREPYRO APP



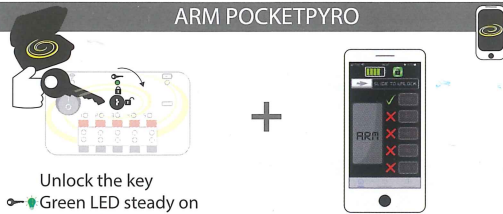
Blue LED steady on

INSERT THE IGNITERS



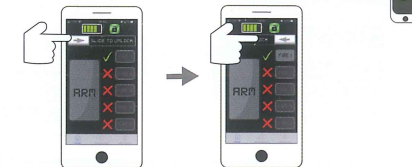
Red LED steady on

ARM POCKETPYRO



Unlock the key
Green LED steady on
NB: NOW STEP AWAY WITH YOUR SMARTPHONE

SLIDE TO UNLOCK



ARM button enabled

ACTIVATE THE IGNITER



Keep pressed ARM button and ignite each single output with FIRE button.
Or ignite all outputs together activating FIRE ALL button from Setting menu

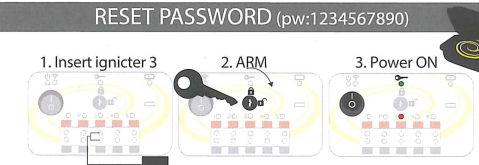
AND NOW FOR A NEW SHOW ...



Lock the key
Green LED off

For a new show, turn off the device and back to POWER ON !!

RESET PASSWORD (pw:1234567890)



Green LED flashing
Red LED flashing