

### INTRODUCTION

Thank you for purchasing the LaTrax Alias quad rotor high-performance helicopter. We know you're excited about getting your new model in the air, but it's very important that you take some time to read through this Quick Start Guide and the included Owner's Manual. Both contain the instructions you will need to operate and maintain your model so that you can enjoy it for years to come.

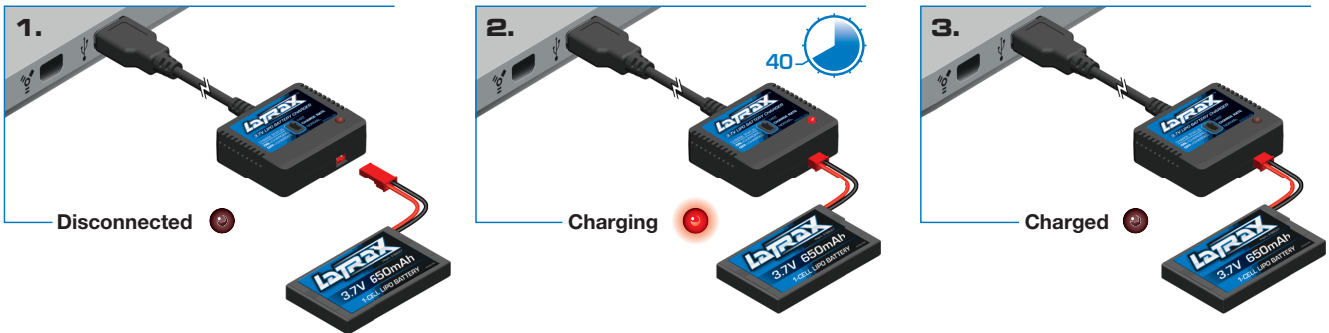
Read and follow all warnings, precautions, and instructions to ensure safe operation. Failure to operate your model in a safe and responsible manner may result in property damage and serious injury. You alone are responsible for ensuring that all instructions and precautions are adhered to.

### 1. CHARGE THE BATTERY PACK

Plug the charger into a USB port. For the best charging performance, use a USB wall adapter rated at 1 amp or greater output. Plug the battery into the charger. Charge time is approximately 40 minutes on the **Fast** charge setting. Some computer USB ports will not support fast charging. If you experience problems, switch to the **Normal** charge setting.

**WARNING! It is critical to follow all instructions for safe and proper use, charging, and storage of LiPo batteries.**

See the included Owner's Manual for more information.



### 2. INSTALL THE TRANSMITTER BATTERIES



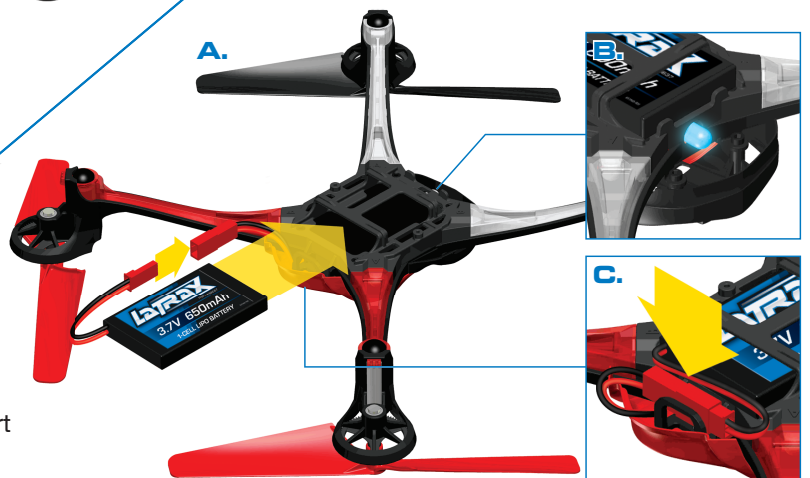
### 3. TURN ON THE TRANSMITTER

The transmitter will emit a rising musical tone. Always turn the transmitter on first, before connecting the helicopter battery.



### 4. TURN ON THE HELICOPTER

Install the fully charged battery into the helicopter and connect the battery (A). The rear-facing LED on the helicopter will glow solid blue indicating that the helicopter is powered on and linked to the transmitter (B). Route the battery wire under the body and insert the plug into the battery plug retainer (C).

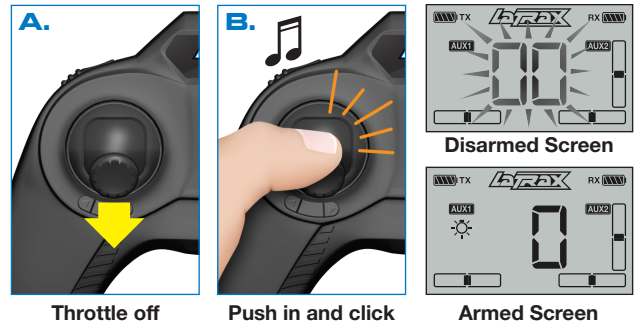


- The included LiPo battery pack must be charged **ONLY** with the USB charger included with the model. Failure to use the correct charger may result in battery damage, fire, personal injury, and/or property damage. **DO NOT** use a charger designed for NiCad or NiMH batteries.
- Charge the battery in a safe area away from flammable materials. Monitor the charging process and never leave batteries unattended while charging. Do not allow small children to charge or handle LiPo batteries.
- Do not use or charge battery packs that have been damaged in any way (bent, dented, swollen, torn covering, or otherwise damaged).

## 5. ARM YOUR HELICOPTER FOR FLIGHT

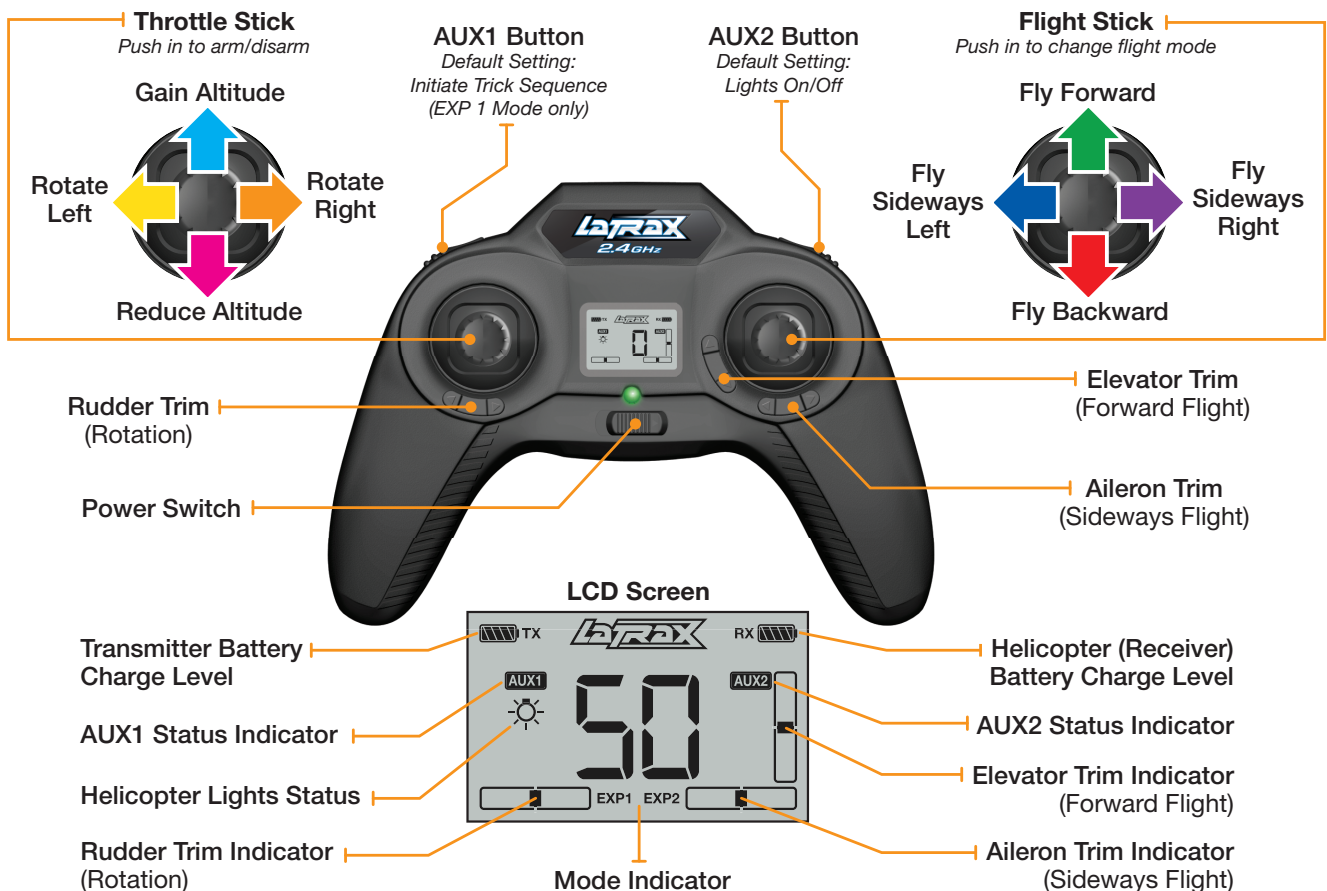
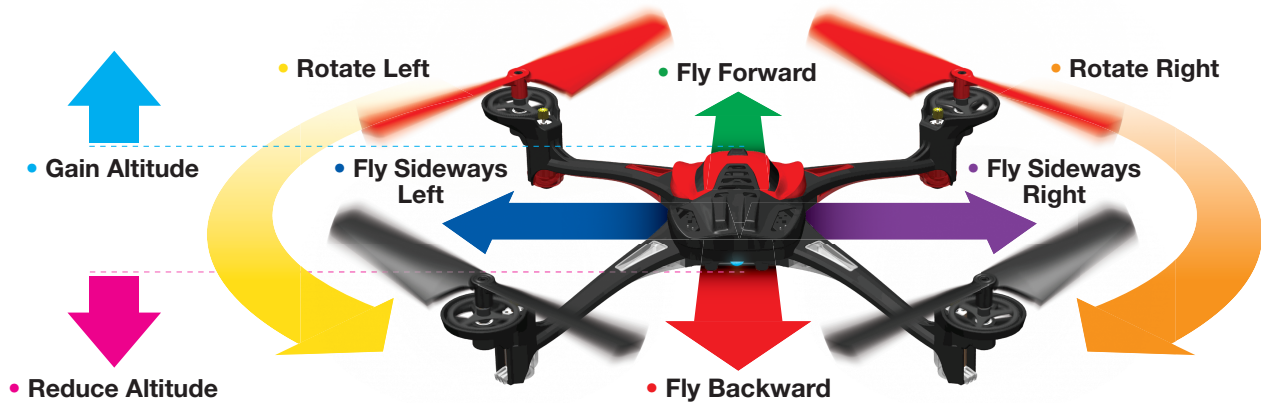
Place the model on a level surface with the blue LED facing you (nose out). Move the throttle stick to the full down position (throttle off). The helicopter will not arm unless the throttle stick is in the down position (A). Push in and click the throttle stick to arm the flight system. The transmitter will emit a tone indicating that the helicopter is armed and ready to fly (B).

**Note:** When the throttle stick is left idle for 5 seconds or the helicopter detects an impact, the helicopter will automatically disarm.



## 6. FLY YOUR HELICOPTER

Gently push the throttle stick forward until the model begins to lift off. Reduce throttle to maintain a hover when the model is at least 3 feet (1 meter) off the ground. This height will keep the model away from ground turbulence for more stable flight. Use gradual inputs until you become familiar with the controls.



### Battery Charge Level Indicators

The helicopter has 2-way communication with the transmitter and will alert you when the battery level is low. When the battery is nearly discharged (approximately 30 seconds before low voltage cutoff), the transmitter will emit a tone every 5 seconds. During this time, fly the helicopter to a safe location and land it. In the last 5 seconds, the transmitter will emit the tone continuously. **WARNING:** To prevent permanent damage to your battery pack, ALWAYS disconnect the battery whenever the helicopter is not in use.

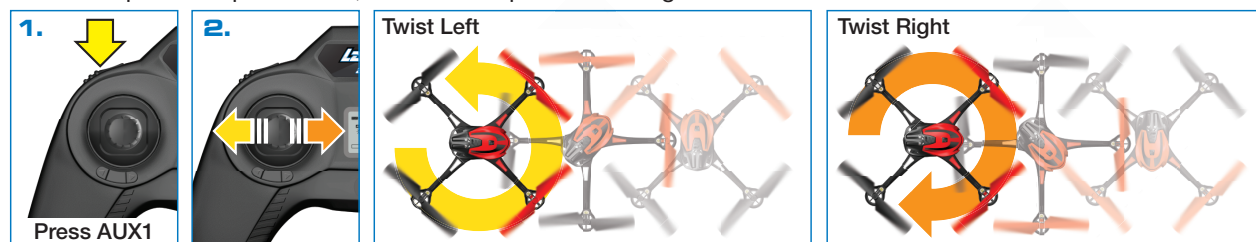
## FLIGHT MODES

- **Normal Mode:** Easiest flight mode. Normal Mode (default mode) limits control input (low rate) and uses the full capability of the flight control system (auto leveling).
- **Expert 1 Mode (EXP1):** EXP1 uses the full capability of the flight control system (auto leveling), but allows greater control input (high rate). EXP1 also enables trick functions.
- **Expert 2 Mode (EXP2):** Rate Mode. In EXP2, the flight control system (auto leveling) is disabled, allowing the pilot to have full control over all aspects of flight.  
**WARNING! EXP2 is intended for expert level pilots only!**

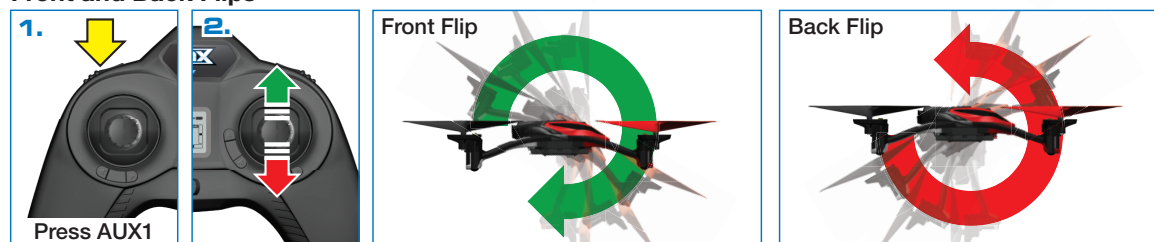
## PERFORMING TRICKS

In Expert 1 Mode (EXP1), Alias can perform automated expert tricks and flips when you press the AUX1 button, and then enter a *quick* stick command in the chosen direction. Do not attempt these flight tricks until you are able to fly confidently in Expert 1 Mode (EXP1).

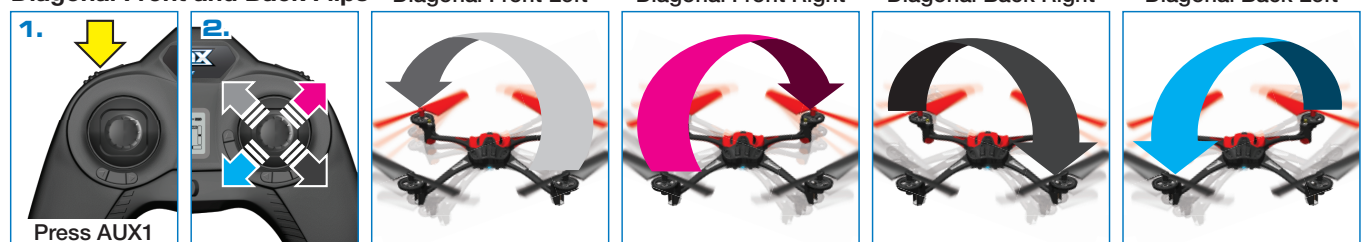
**Twister:** Continuous spin while maintaining normal directional and altitude control. The helicopter will spin 5 times, and then stop at its starting orientation.



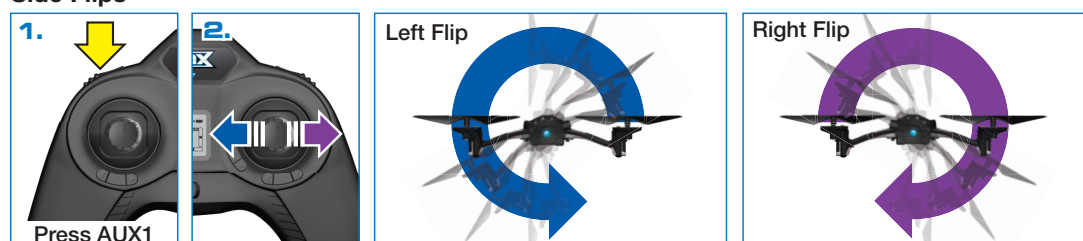
## Front and Back Flips



## Diagonal Front and Back Flips



## Side Flips

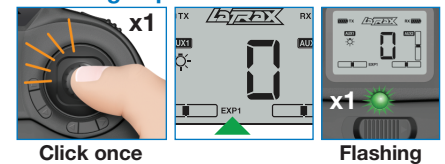


## TRICK TIPS

- Place the helicopter into a stable hover before attempting any flight tricks.
- A quick stick command must be made within 3 seconds of the AUX1 button being pressed.
- The model will automatically gain some altitude just before it performs a trick. When flying indoors, initiate all tricks between 2-3 feet off the floor.
- After performing a trick, the model may gain or lose altitude depending on the position of the throttle stick. Be prepared to adjust the throttle to compensate for altitude changes.
- The model will gain less altitude and recover from a trick slower as the battery charge weakens. Avoid performing tricks when the model's battery charge is low.

**Expert Level Pilots: Visit [LaTrax.com](http://LaTrax.com) to learn how to program multiple flips.**

## Selecting Expert 1



## Selecting Expert 2

