

REPLACEMENT PARTS // TEILELISTE // LISTE DES PIÈCES DE RECHANGE // ELENCO DEI RICAMBI

| Part # | English | Deutsch | Français | Italiano |
|-----------|--|---|---|---|
| DYNS1222 | DYN 550 12-Turn Brushed Motor | DYN-550-12-Gang-Bürstenmotor | Moteur con spazzole 12 giri DYN 550 | Moteur à balais DYN 550 12T |
| DYNS2210 | 60A FWD/REV Brushed ESC | 60A Vorwärts/Rückwärts Bürstenregler | Variateur 60A Marche Av/Arr pour moteur à charbon | 60A FWD/REV regolatore a spazzole |
| LOS230060 | Kicker Audio Body Set: 22S SCT | Kicker-Audio-Gehäusesatz: 22S SCT | Kit corpo audio: 22S SCT | Ensemble de carrosserie Kicker Audio : 22S SCT |
| LOS230061 | Magnaflow Body Set: 22S SCT | Magnaflow-Gehäusesatz: 22S SCT | Kit carrozzeria Magnaflow: 22S SCT | Ensemble de carrosserie Magnaflow : 22S SCT |
| LOS231034 | Mud Flaps | Schmutzfänger | Bavettes de garde-boue | Parafanghi |
| LOS231042 | Chassis | Fahrgestell | Châssis | Telaio |
| LOS231043 | Composite Steering Set | Komposit-Lenkungssatz | Ensemble de direction composite | Set sterzo in composito |
| LOS231044 | Chassis Mounting Set | Fahrgestellstützsatz | Support châssis | Set supporto telaio |
| LOS231045 | Bulkhead Camber Black, Servo Mount | Spritzwandsturz schwarz, Servohalterung | Support de suspension, noir, support du servo | Paratia camber nero, supporto servo |
| LOS231046 | Steering Hardware Set | Hardwaresatz Lenkung | Ensemble de matériel de direction | Set bulloneria sterzo |
| LOS231047 | Body Mount Set | Karosseriehalterungssatz | Support de carrosserie | Set Supporto Carrozzeria |
| LOS231048 | Front Bumper Set | Frontstoßstangensatz | Pare-choc avant | Set paraurti anteriore |
| LOS231049 | Rear Bumper Set | Heckstoßstangensatz | Pare-choc arrière | Set paraurti posteriore |
| LOS231050 | Steering Bearing Set | Lenklagersatz | Ensemble de roulement de direction | Set cuscinetti sterzo |
| LOS231051 | Battery Mounting Foams | Schaumstoffe Akku-Halterung | Mousses de montage de batteries | Schiuma di montaggio per batteria |
| LOS232036 | Gear Cover and Motor Guard | Getriebeabdeckung und Motorschutz | Cache de l'engrenage et protection moteur | Coperchio pignone e protezione motore |
| LOS232037 | Transmission Case | Getriebeabdeckung | Boîtier de transmission | Scatola del cambio |
| LOS232038 | Spur Gear and Slipper Pad 48P 84T | Stirnrad und Gleitkissen 48P 84T | Engrenage cylindrique et sabot de piston 48P 84T | Corona e pattino scorrevole 48P 84T |
| LOS232039 | Complete Gear Differential | Komplettes Getriebe Differential | Engrenage différentiel complet | Differenziale pignone completo |
| LOS232040 | Gear Set, Gear Differential | Getriebesatz, Getriebe Differential | Ensemble d'engrenages, engrenage différentiel | Set pignone, differenziale pignone |
| LOS232041 | Motor Plate | Motorplatte | Plaque moteur | Piastra motore |
| LOS232042 | Idler Gear and Shaft | Zwischenrad und Welle | Axe de pignon intermédiaire | Ingranaggio e albero folle |
| LOS232043 | Layshaft and Gear | Zwischenwelle und Getriebe | Arbre intermédiaire et engrenage | Albero secondario e ingranaggio |
| LOS232044 | Front Axle | Vorderachse | Essieu avant | Assale anteriore |
| LOS232045 | CVA Driveshaft, Complete | CVA-Antriebswelle, komplett | Arbres de transmission CVA, complet | Albero di trasmissione CVA completo |
| LOS232046 | Gear Differential Rebuild Set | Nachbausatz Getriebe Differential | Ensemble de reconstruction de l'engrenage différentiel | Set differenziale pignone rigenerato |
| LOS232047 | Slipper Hardware Set | Hardwaresatz Gleiter | Ensemble de matériel du sabot | Set bulloneria scorrevole |
| LOS232048 | Wheel Hex Set | Radsechskantsatz (4) | Hexagones de roues (4) | Set esagoni ruote (4) |
| LOS233016 | Front Shock Set, Complete | Kompletter Vorderer Stoßdämpfersatz | Lot d'amortisseurs avant, complet | Set ammortizzatore anteriore completo |
| LOS233017 | Rear Shock Set, Complete | Kompletter Hinterer Stoßdämpfersatz | Lot d'amortisseurs arrière, complet | Set ammortizzatore posteriore completo |
| LOS233018 | Shock Body Set | Stoßdämpfergehäusesatz | Carrosserie amortisseurs | Set corpo ammortizzatore |
| LOS233019 | Shock Shaft Set | Kolbenstangensatz | Lot de bras d'amortisseurs | Set albero ammortizzatore |
| LOS233020 | Spring Set | Federsatz | Ressort | Set molle |
| LOS233021 | Spring Cups and Clip Set | Satz mit Federtellern und Clips | Lot de coupelles de ressort et d'attaches | Set molle, coppe e clip |
| LOS233022 | Shock Seal Set | Stoßdämpferdichtungssatz | Lot de joints d'amortisseurs | Set guarnizioni ammortizzatore |
| LOS233023 | Shock Caps (2) | Stoßdämpferkappen (2) | Capuchons d'amortisseurs (2) | Tappi ammortizzatore (2) |
| LOS233024 | Shock Ends | Stoßdämpferenden | Extrémités d'amortisseurs | Terminali ammortizzatore |
| LOS234024 | Suspension Arm Set | Aufhängungsarmsatz | Lot de bras de suspension | Set braccetti sospensioni |
| LOS234025 | Front Caster Block Set | Vorderradblocksatz | Lot de blocs de roulettes avant | Set blocco ruota anteriore |
| LOS234026 | Hub and Spindle Set | Satz aus Nabe und Spindel | Lot de moyeux et de fusées | Set mozzo e fuselli |
| LOS234027 | Camber and Steering Link Set | Satz aus Sturz und Lenkstange | Lot de timonerie de direction et de la chambre | Set camber e braccetti sterzo |
| LOS234028 | Shock Tower Set | Stoßdämpfersatz | Support d'amortisseurs | Set Torre Ammortizzatore |
| LOS234029 | Pivot Set | Drehgelenksatz | Lot pivot | Set perni |
| LOS234030 | Aluminum Front Chassis Plate | Vordere Aluminium-Karosserieplatte | Plaque châssis avant en aluminium | Piastra anteriore telaio in alluminio |
| LOS234031 | Aluminum Rear Chassis Plate | Hintere Aluminium-Karosserieplatte | Plaque châssis arrière en aluminium | Piastra posteriore telaio in alluminio |
| LOS234032 | Hinge Pin Set | Scharnierbolzensatz | Lot de charnière | Set piastri per perni |
| LOS234033 | Hinge Pin Lock Screws | Scharnierbolzen-Sicherungsstifte | Vis de blocage de charnière | Viti di supporto piastri per perni |
| LOS234034 | Ball Stud, 4.8mm x 6mm (4) | Kugelzapfen, 4,8 mm x 6 mm (4) | Piton à rotule, 4,8 mm x 6 mm (4) | Viti a sfera, 4,8 mm x 6 mm (4) |
| LOS235003 | Cap Head Screws M3 x 6mm (10) | Inbusschrauben M3 x 6 mm (10) | Vis à tête bombée, M3 x 6 mm (10) | Viti a testa cilindrica, M3 x 6 mm (10) |
| LOS235018 | Set Screws, M3 X 3mm (10) | Stellschrauben, M3 x 3 mm (10) | Vis de fixation, M3 x 3 mm (10) | Viti di fermo, M3 x 3 mm (10) |
| LOS235024 | Button Head Screws M3 x 25mm (10) | Halbrundschrauben, M3 x 25 mm (10) | Vis à tête bombée M3 x 25mm (10) | Viti a testa tonda, M3 x 25 mm (10) |
| LOS235028 | Flat Head Screws M3 x 45mm (6) | Flachkopfschrauben, M3 x 45 mm (6) | Vis à tête fraisée, M3 x 45mm (6) | Viti a testa piatta, M3 x 45 mm (6) |
| LOS235029 | Cap Head Screws M2 x 4mm (10) | Inbusschrauben M2 x 4 mm (10) | Vis à tête bombée, M2 x 4 mm (10) | Viti a testa cilindrica, M2 x 4 mm (10) |
| LOS4114 | 48 Pitch Pinion Gear, 14T | 48 Pitchzahnradgetriebe, 14T | Engrenage à pignons pas 48, 14T | Pignone 48P, 14T |
| LOS4118 | 48 Pitch Pinion Gear, 18T | 48 Pitchzahnradgetriebe, 18T | Engrenage à pignons pas 48, 18T | Pignone 48P, 18T |
| LOS43015 | Wheel and Tire Mounted (2) | Montiertes Rad und Reifen (2) | Support volant et pneu (2) | Ruota con pneumatico montato (2) |
| LOSA6937 | 5 x 10mm Shielded Ball Bearing (2) | 5 x 10 mm abgedichtetes Kugellager (2) | Roulement à billes blindé 5 x 10 mm (2) | Cuscinetti a sfera schermati 5 x 10 mm (2) |
| LOSA6955 | 5 x 13mm HD Clutch Bearings (2) | 5 x 13 mm HD Kupplungslager (2) | Roulements à embrayage ultra-résistant 5 x 13 mm (2) | Cuscinetti frizione HD 5 x 13mm (2) |
| LOSA6957 | 10 x 15 x 4mm BB (2) w/ Nylon Retainer | 10 x 15 x 4 mm BB (2) mit Nylon-Halter | Roulements à billes 10 x 15 x 4 mm (0) avec bague de retenue en nylon | Cuscinetto a sfera 10 x 15 x 4mm (2) con fermo in nylon |
| SPMS606 | Standard, WP, Plastic Gear Servo | Standard, WP, Kunststoffgetriebe-Servo | Standard, WP, Servo ingranaggio in plastica | Standard, étanche, Servo à engrenage en plastique |
| SPMSRX200 | STX2 2CH Radio | STX2 2-Kanal Fernsteuerung | Émetteur STX2 2 voies | Trasmittente STX2 2 canali |
| SPMSTX200 | 2-Ch Receiver | 2 Kanal Empfänger | Récepteur 2 voies | Ricevitore |
| TLR235004 | Flat Head Screws, M3 x 25mm (10) | Flachkopfschrauben, M3 x 25 mm (10) | Vis à tête fraisée, M3 x 25mm (10) | Viti a testa piatta, M3 x 25 mm (10) |

REPLACEMENT PARTS // TEILELISTE // LISTE DES PIÈCES DE RECHANGE // ELENCO DEI RICAMBI

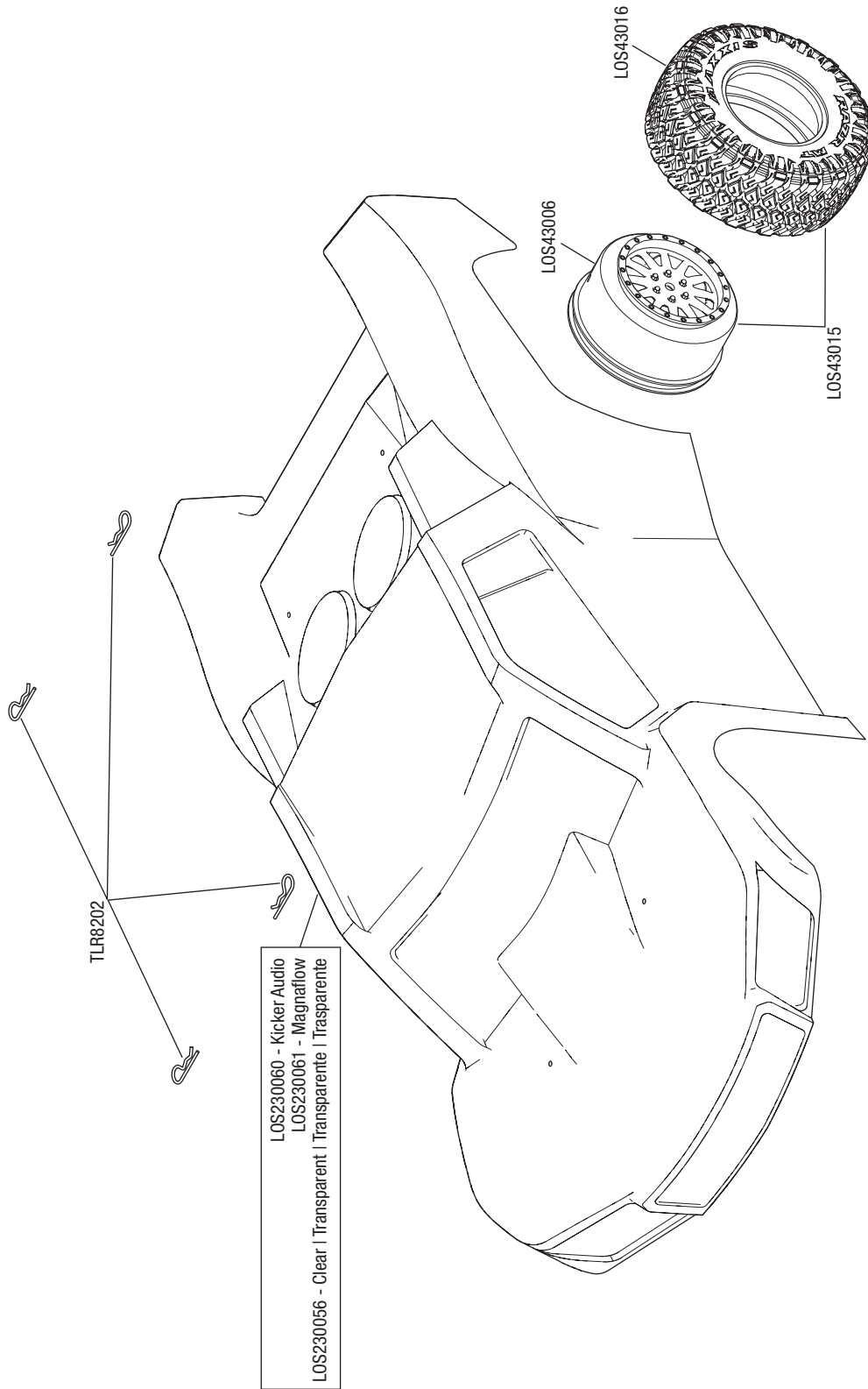
| Part # | English | Deutsch | Français | Italiano |
|-----------|---------------------------------------|--|--|--|
| TLR235007 | Flat Head Screws M2.5 x 10mm (10) | Flachkopfschrauben, M2.5 x 10 mm (10) | Vis à tête fraisée, M2.5 x 10mm (10) | Viti a testa piatta, M2.5 x 10 mm (10) |
| TLR5092 | Upper Shock Bushing (4) | Oberes Dämpferlager (4) | Bague d'amortisseurs supérieurs (4) | Boccole ammortizzatore superiore (4) |
| TLR5900 | Button Head Screws, M3 x 5mm (10) | Halbrundsrauben, M3 x 5 mm (10) | Vis à tête bombée M3 x 5mm (10) | Viti a testa tonda, M3 x 5 mm (10) |
| TLR5901 | Button Head Screws, M3 x 6mm (10) | Halbrundsrauben, M3 x 6 mm (10) | Vis à tête bombée M3 x 6mm (10) | Viti a testa tonda, M3 x 6 mm (10) |
| TLR5902 | Button Head Screws, M3 x 8mm (10) | Halbrundsrauben, M3 x 8mm (10) | Vis à tête bombée M3 x 8mm (10) | Viti a testa tonda, M3 x 8 mm (10) |
| TLR5903 | Button Head Screws, M3 x 10mm (10) | Halbrundsrauben, M3 x 10 mm (10) | Vis à tête bombée M3 x 10mm (10) | Viti a testa tonda, M3 x 10 mm (10) |
| TLR5904 | Button Head Screws, M3 x 12mm (10) | Halbrundsrauben, M3 x 12 mm (10) | Vis à tête bombée M3 x 12mm (10) | Viti a testa tonda, M3 x 12 mm (10) |
| TLR5906 | Button Head Screws, M3 x 35mm (10) | Halbrundsrauben, M3 x 35 mm (10) | Vis à tête bombée M3 x 35mm (10) | Viti a testa tonda, M3 x 35 mm (10) |
| TLR5909 | Button Head Screws, M3 x 16mm (10) | Halbrundsrauben, M3 x 16 mm (10) | Vis à tête bombée M3 x 16mm (10) | Viti a testa tonda, M3 x 16 mm (10) |
| TLR5910 | Button Head Screws M3 x 14mm (10) | Halbrundsrauben, M3 x 14 mm (10) | Vis à tête bombée M3 x 14mm (10) | Viti a testa tonda, M3 x 14 mm (10) |
| TLR5911 | Button Head Screws, M3 x 20mm (10) | Halbrundsrauben, M3 x 20 mm (10) | Vis à tête bombée M3 x 20mm (10) | Viti a testa tonda, M3 x 20 mm (10) |
| TLR5912 | Button Head Screws, M3 x 54mm (2) | Halbrundsrauben, M3 x 54 mm (2) | Vis à tête bombée M3 x 54mm (2) | Viti a testa tonda, M3 x 54 mm (2) |
| TLR5914 | Button Head Screws, M2 x 12mm (10) | Halbrundsrauben, M2 x 12 mm (10) | Vis à tête bombée M2 x 12mm (10) | Viti a testa tonda, M2 x 12 mm (10) |
| TLR5961 | Flat Head Screw, M3 x 8mm (10) | TLR Flachkopfschrauben, M3 x 8mm (10) | Vis à tête fraisée M3 x 8mm (10) | Vite a testa piatta, M3 x 8mm (10) |
| TLR5962 | Flat Head Screw, M3 x 10mm (10) | TLR Flachkopfschrauben, M3 x 10mm (10) | Vis à tête fraisée M3 x 10mm (10) | Vite a testa piatta, M3 x 10mm (10) |
| TLR5963 | Flat Head Screw, M3 x 12mm (10) | TLR Flachkopfschrauben, M3 x 12mm (10) | Vis à tête fraisée M3 x 12mm (10) | Vite a testa piatta, M3 x 12mm (10) |
| TLR6105 | E-Clips, 3mm Shaft (12) | Antriebsklammern, 3mm (12) | Clips pour arbre 3mm (12) | Clips 3 mm (12) |
| TLR6276 | Set Screw, M2.5 x 5mm, Cup Point (10) | TLR Schraubenset, M2.5 x 5mm, Cup Point (10) | Vis sans tête bout bombé M2,5x5mm (10) | Grano, M2.5 x 5mm, punta piana (10) |
| TLR6288 | Set Screw, M3 x 2.5mm (10) | TLR Schraubenset, M3 x 2.5mm (10) | Vis sans tête, M3 x 2.5mm (10) | Grano, M3 x 2.5mm (10) |
| TLR6313 | Locknut, M3 x .5 x 5.5mm (10) | TLR Mutter selbstsichernd M3 x .5 x 5.5mm (10) | Ecrou M3 x 0,5 x 5,5mm (10) | Dado autobloccante, M3 x .5 x 5.5mm (10) |
| TLR6352 | Washers, M3 (10) | TLR U-Scheibe, M3 (10) | Rondelles M3 (10) | Rodelle, M3 (10) |
| TLR8202 | Body Clips, Black (12): 22 | TLR Karosseriekammern Schwarz (12): 22 | 22 - Clips de carrosserie noirs (12) | Clips carrozzeria, neri (12): 22 |
| VTR235178 | M3 x 14mm Flat Head Screw (10) | Rundkopfschrauben M3 x 14 mm (10 Stk) | Vis CHC, M3 x 14mm (10) | Vite con testa a brugola, M3 x 14mm (10) |

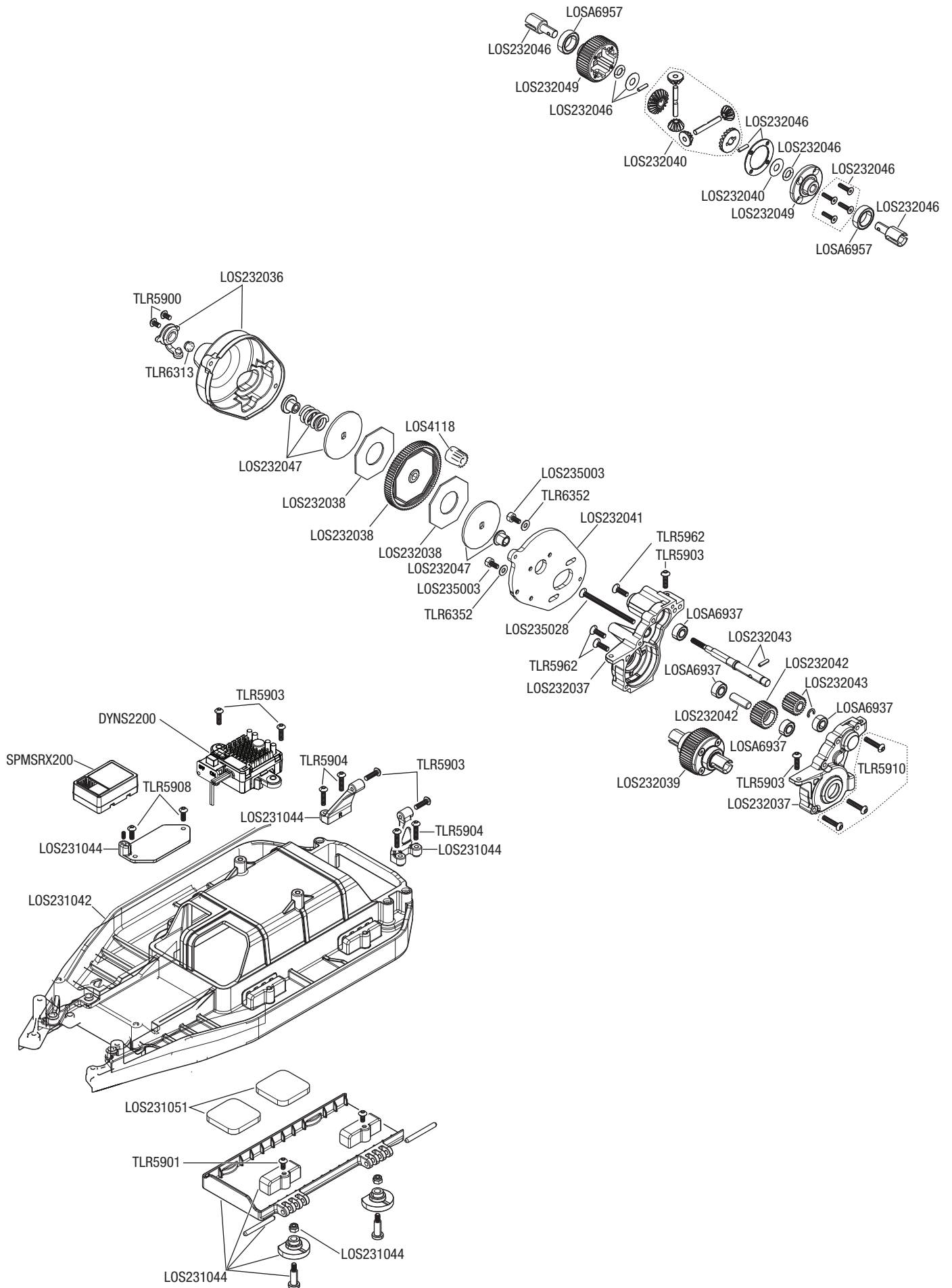
RECOMMENDED PARTS // EMPFOHLENE TEILE // PIÈCES RECOMMANDÉES // PEZZI RACCOMANDATI

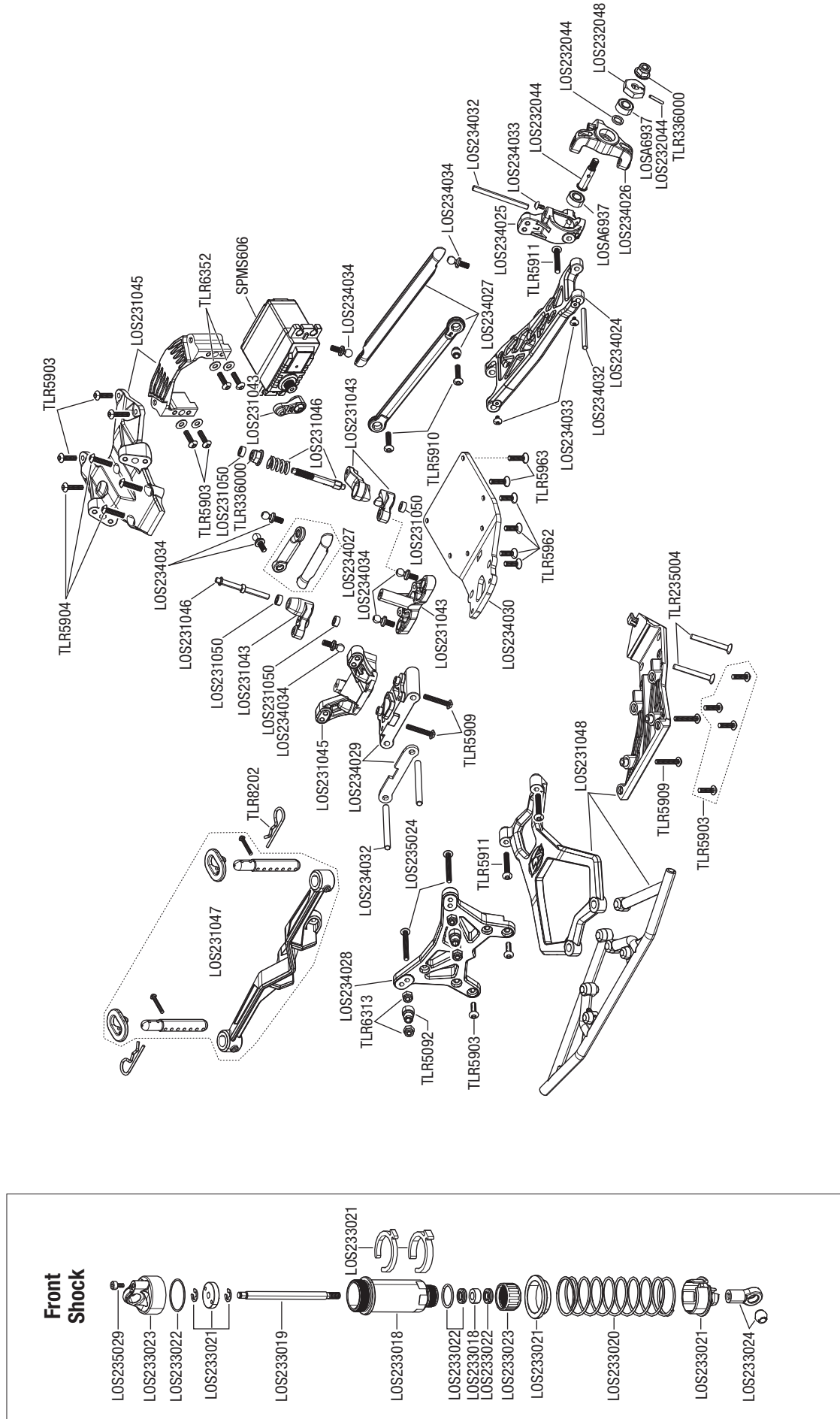
| Part # | English | Deutsch | Français | Italiano |
|---------|-----------------------------|------------------------------|------------------------------------|----------------------------|
| DYN1510 | Powerstage Bundle - Stage 2 | Leistungsteilpaket – Stufe 2 | Lot à étage de puissance : étape 2 | Bundle Powerstage - fase 2 |

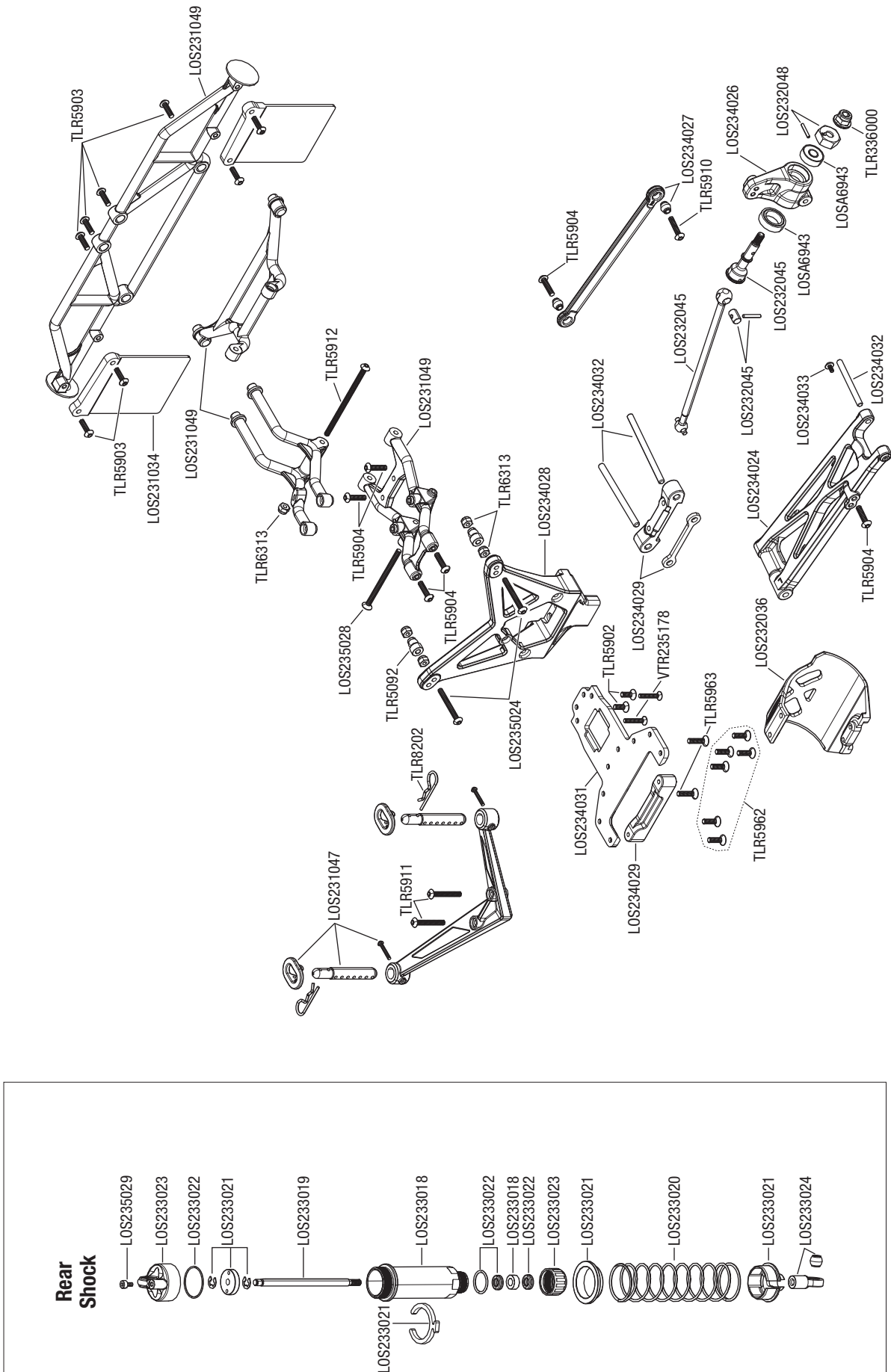
OPTIONAL PARTS // OPTIONALE TEILE // PIÈCES OPTIONNELLES // PARTI OPZIONALI

| Part # | English | Deutsch | Français | Italiano |
|-----------|--|--|---|--|
| DYN2950 | 8-in-1 Hex Wrench Kit | 8-in-1 Sechskantschlüsselsatz | Kit de clés hexagonales 8-en-1 | Kit chiavi esagonale 8 in 1 |
| DYN4401 | GPS Speed Meter | GPS-Tachometer | Indicateur de vitesse GPS | Tachimetro GPS |
| DYN9005EC | 7.4V 5000mAh 2S 20C LiPo, Case: EC3 | 7,4 V 5000 mA 2S 20C LiPo, Schale: EC3 | Batterie Li-Po 7,4V 5 000 mAh 2S 20C, boîtier : EC3 | 7,4 V 5000 mAh 2S 20C LiPo, Case: EC3 |
| LOS230054 | MAXXIS Body Set | MAXXIS Karosseriesatz | Carrosserie MAXXIS | Set carrozzeria MAXXIS |
| LOS230055 | K&N Body Set | K&N Karosseriesatz | Carrosserie K&N | Set carrozzeria K&N |
| LOS230056 | Body Set, Clear | Karosseriesatz, transparent | Carrosserie transparente | Set carrozzeria, trasparente |
| LOS4115 | 48 Pitch Pinion Gear, 15T | 48 Pitchzahnradgetriebe, 15T | Engrenage à pignons pas 48, 15T | Pignone 48P, 15T |
| LOS4116 | 48 Pitch Pinion Gear, 16T | 48 Pitchzahnradgetriebe, 16T | Engrenage à pignons pas 48, 16T | Pignone 48P, 16T |
| LOS4117 | 48 Pitch Pinion Gear, 17T | 48 Pitchzahnradgetriebe, 17T | Engrenage à pignons pas 48, 17T | Pignone 48P, 17T |
| LOS4119 | 48 Pitch Pinion Gear, 19T | 48 Pitchzahnradgetriebe, 19T | Engrenage à pignons pas 48, 19T | Pignone 48P, 19T |
| LOS4120 | 48 Pitch Pinion Gear, 20T | 48 Pitchzahnradgetriebe, 20T | Engrenage à pignons pas 48, 20T | Pignone 48P, 20T |
| LOS43006 | Wheels (4) | Räder (4) | Roues (4) | Ruote (4) |
| LOS43016 | Maxxis Razr MT, SCT Tire (2) | Maxxis Razr MT, SCT Reifen (2) | Pneu SCT, Maxxis Razr MT (2) | Maxxis Razr MT, Pneumatici SCT (2) |
| LOSA99174 | Car Stand | Fahrzeugständer | Socle | Supporto automodello |
| TLR232009 | HDS Spur Gear 76T 48P Kevlar® | HDS Stirnrad 76T 48P Kevlar | Engrenage HDS 76T 48P Kevlar | Corona HDS 76T 48P Kevlar |
| TLR232010 | HDS Spur Gear 78T 48P Kevlar® | HDS Stirnrad 78T 48P Kevlar | Engrenage HDS 78T 48P Kevlar | Corona HDS 78T 48P Kevlar |
| TLR232011 | HDS Spur Gear 82T 48P Kevlar® | HDS Stirnrad 78T 82P Kevlar | Engrenage HDS 82T 48P Kevlar | Corona HDS 82T 48P Kevlar |
| TLR336000 | 4mm Aluminum Serrated Lock Nuts, Black (6) | 4 mm Aluminium Rändelmutter, schwarz (6) | Contre-écrous en aluminium à embase striée 4 mm, noir (6) | Controdado dentato in alluminio 4 mm, nero (6) |
| TLR336001 | 4mm Aluminum Serrated Lock Nuts, Blue (6) | 4 mm Aluminium Rändelmutter, blau (6) | Contre-écrous en aluminium à embase striée 4 mm, bleu (6) | Controdado dentato in alluminio 4 mm, blu (6) |
| TLR74004 | Silicone Shock Oil, 25 wt, 2 oz | Stoßdämpfer-Silikonöl, 25 wt, 59 ml (2 oz) | Huile de silicone pour amortisseurs, 25 wt, 2 oz | Olio di silicone ammortizzatore, 25 wt, 2 oz |
| TLR74005 | Silicone Shock Oil, 27.5 wt, 2 oz | Stoßdämpfer-Silikonöl, 27,5 wt, 59 ml (2 oz) | Huile de silicone pour amortisseurs, 27,5 wt, 2 oz | Olio di silicone ammortizzatore, 27,5 wt, 2 oz |
| TLR74006 | Silicone Shock Oil, 30 wt, 2 oz | Stoßdämpfer-Silikonöl, 30 wt, 59 ml (2 oz) | Huile de silicone pour amortisseurs, 30 wt, 2 oz | Olio di silicone ammortizzatore, 30 wt, 2 oz |
| TLR74008 | Silicone Shock Oil, 35 wt, 2 oz | Stoßdämpfer-Silikonöl, 35 wt, 59 ml (2 oz) | Huile de silicone pour amortisseurs, 35 wt, 2 oz | Olio di silicone ammortizzatore, 35 wt, 2 oz |
| TLR74009 | Silicone Shock Oil, 37.5 wt, 2 oz | Stoßdämpfer-Silikonöl, 37,5 wt, 59 ml (2 oz) | Huile de silicone pour amortisseurs, 37,5 wt, 2 oz | Olio di silicone ammortizzatore, 37,5 wt, 2 oz |
| TLR76000 | Tire Glue, Standard | Reifenklebemittel, Standard | Colle à pneus, standard | Colla pneumatici, standard |
| TLR76004 | TLR Lok, Threadlock, Blue | TLR Schraubensicherungslack Blau | Frein filet TLR Lok, bleu | TLR Lok, frenafilletti, blu |











WWW.LOSI.COM

©2018 Horizon Hobby, LLC.

Losi, 22S, EC3, Dynamite, Prophet and the Horizon Hobby logo are trademarks or registered trademarks of Horizon Hobby, LLC. The Spektrum trademark is used with permission of Bachmann Industries, Inc. Maxxis, Magnaflow, Kicker, K&N, and associated logos are property of their respective owners and are used with permission.

Created 09/18

58354

LOS03022T1/T2