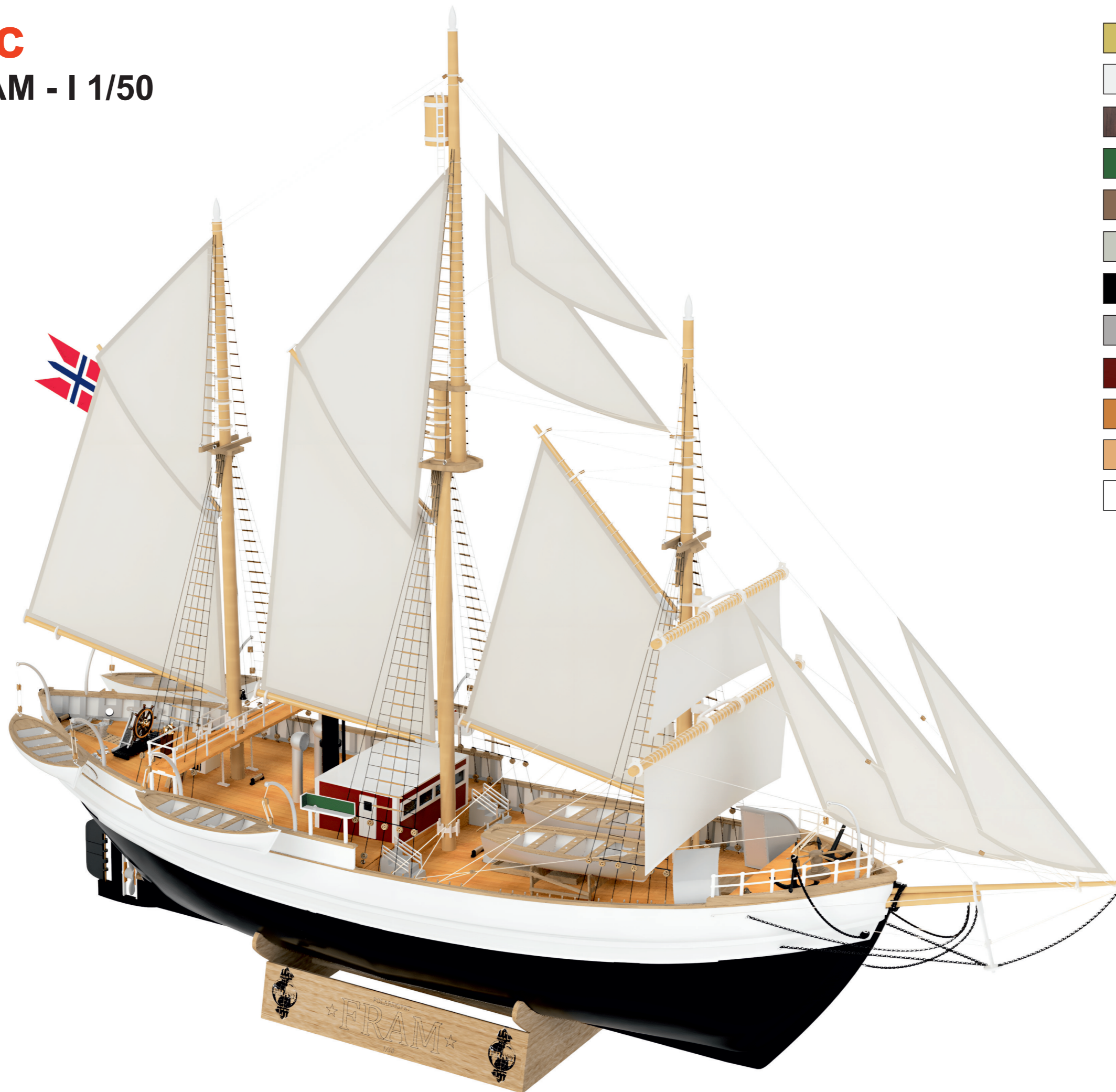





modell-tec

Polarskipet FRAM - I 1/50



	Gold
	White
	Dark Brown
	Green
	Brown
	Light Gray
	Black
	Aluminium
	Wine Red
	Orange
	Oak Tree
	Transparent Vanish

Scale: 1/50
Total L: 950 mm
L: 780 mm
H: 740 mm
W: 230 mm



Don't use glue



Symetric



Sanding



For sanding



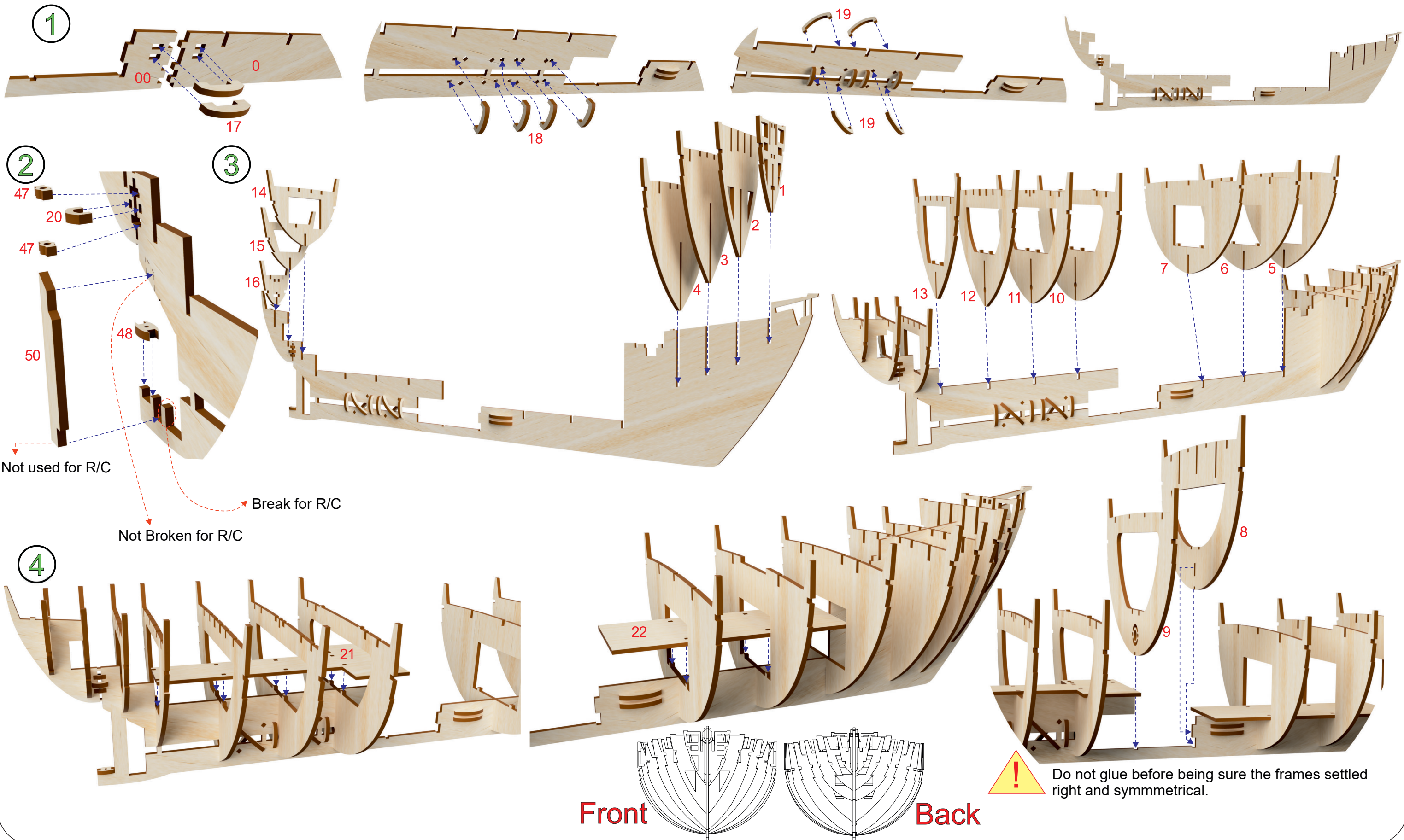
Caution



Make wet

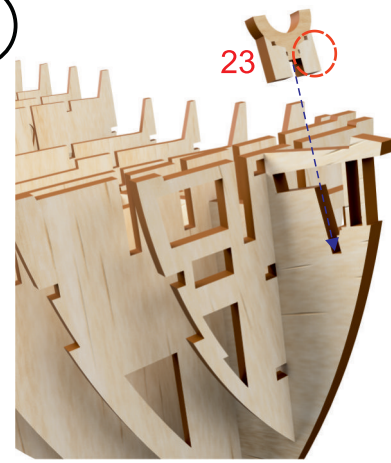
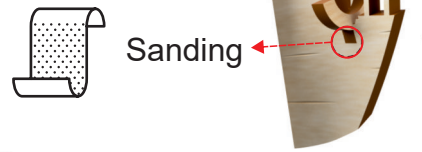


Sensitive Part !

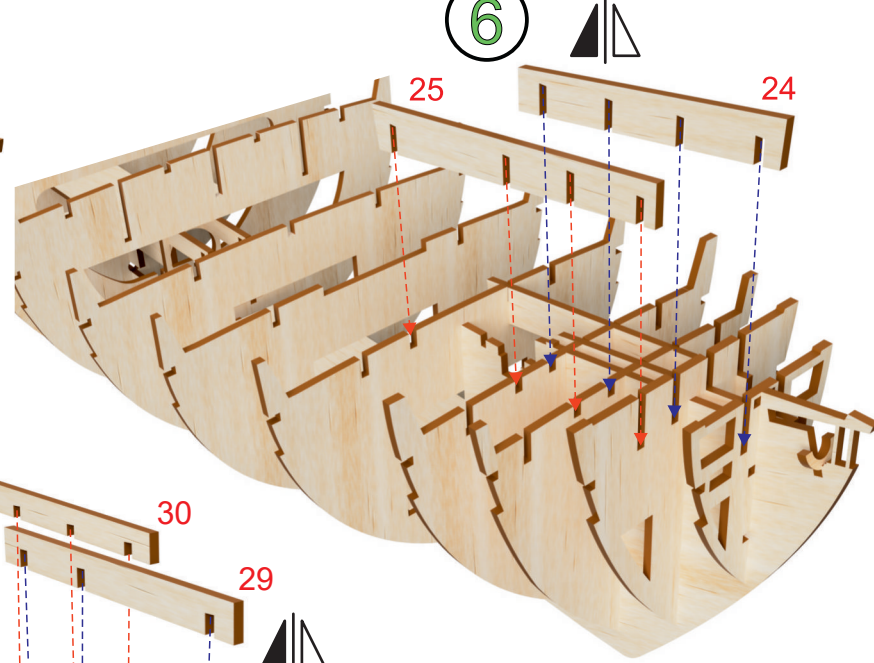


5

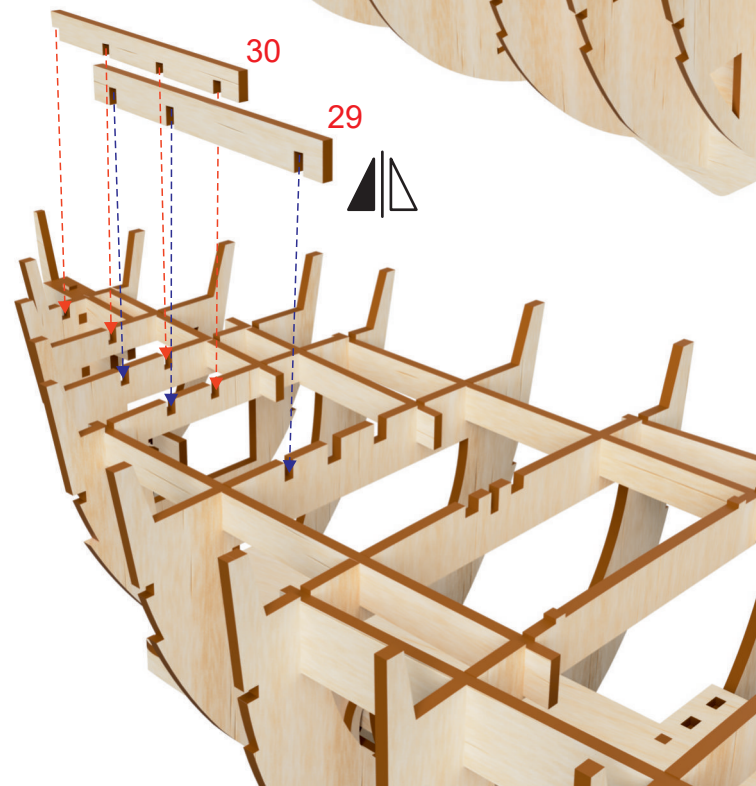
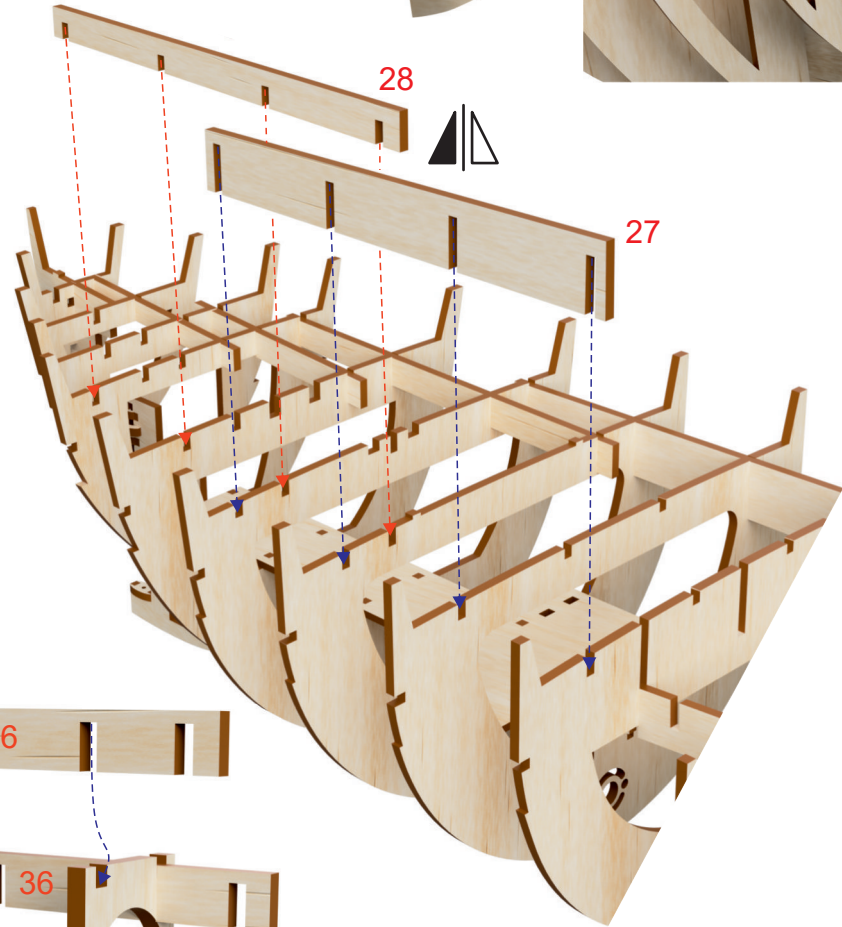
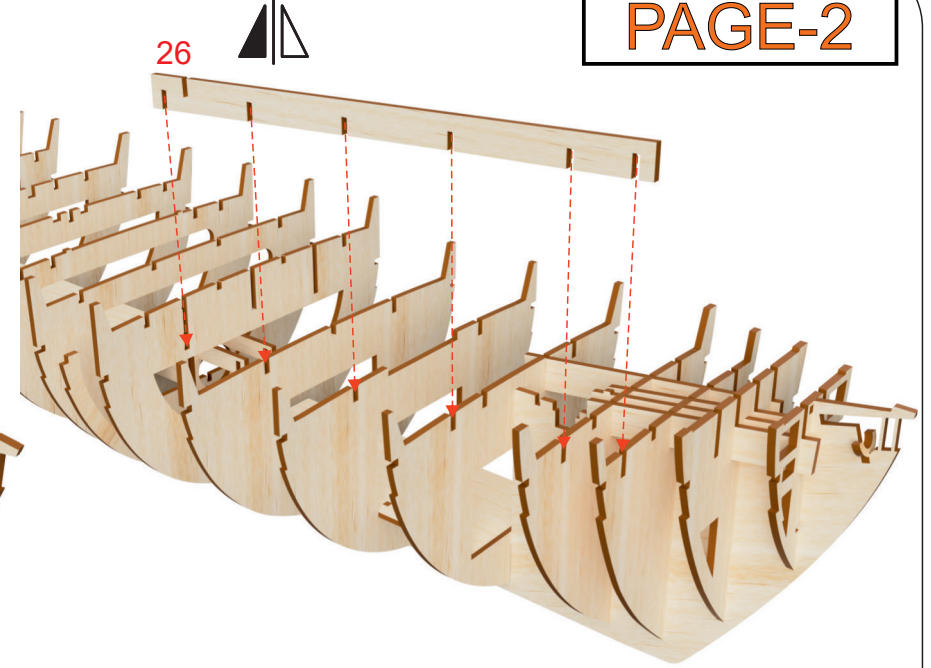
Cut off the lazer printed line after gluing



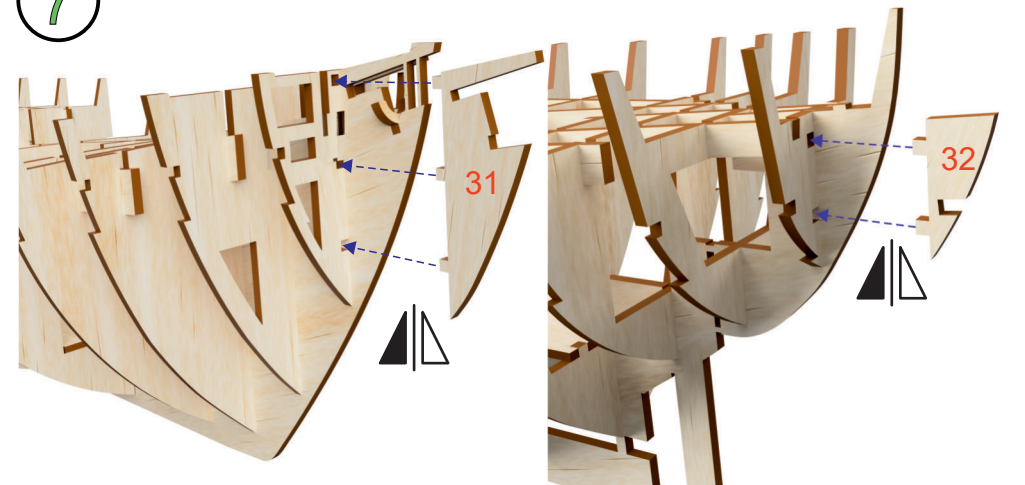
6



26



7



8



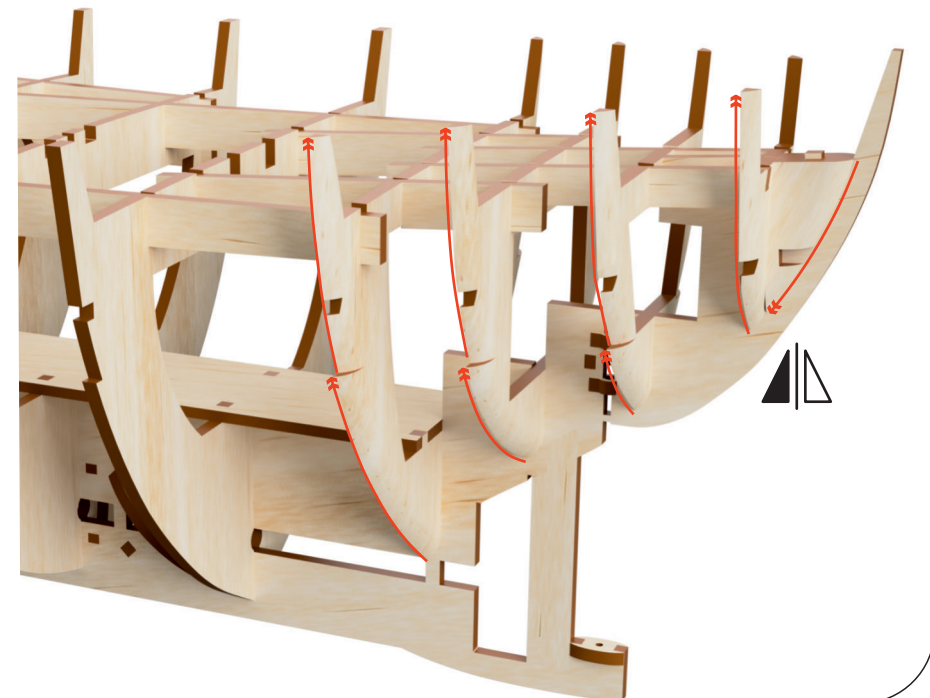
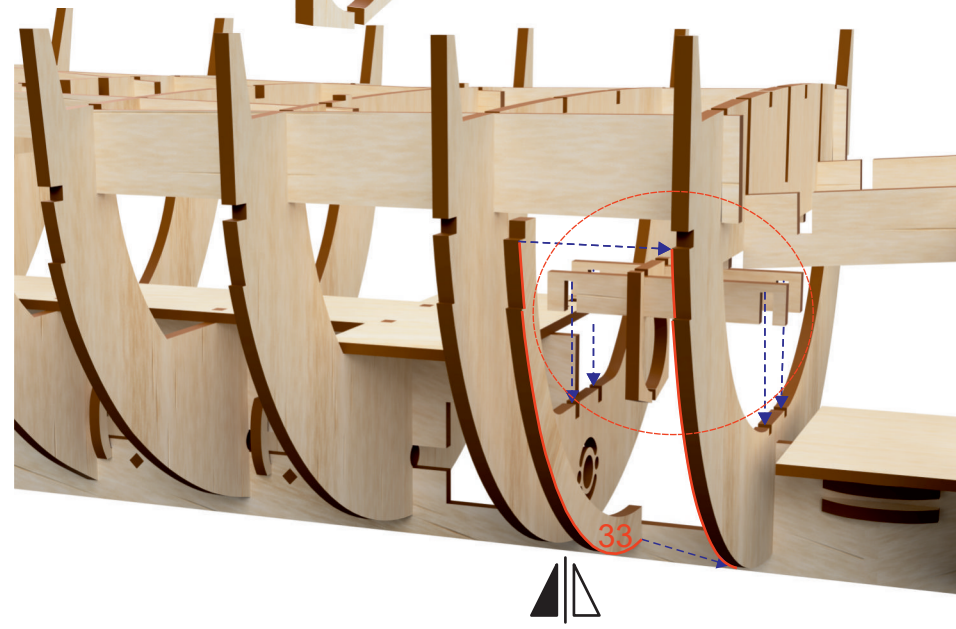
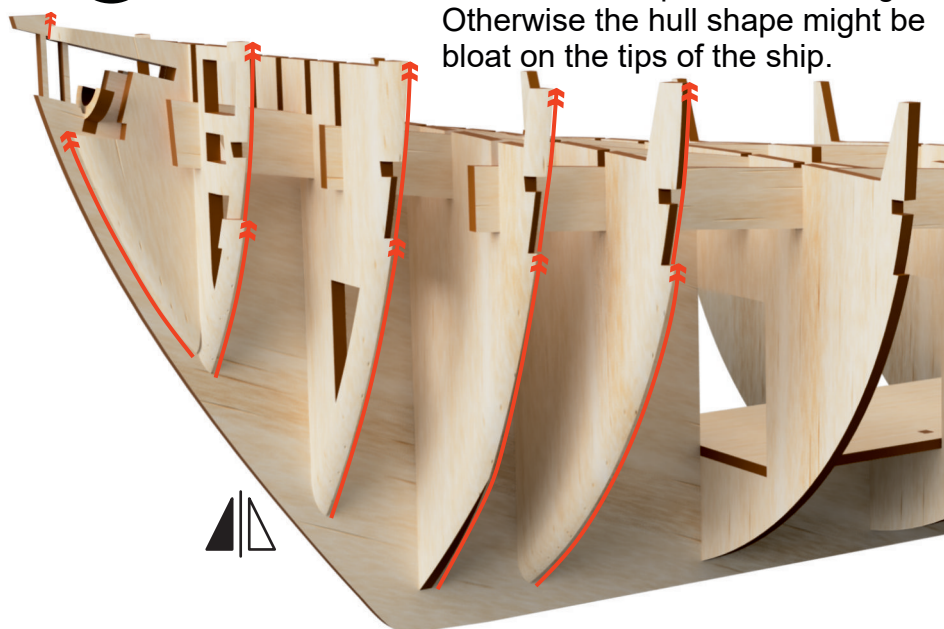
37



9

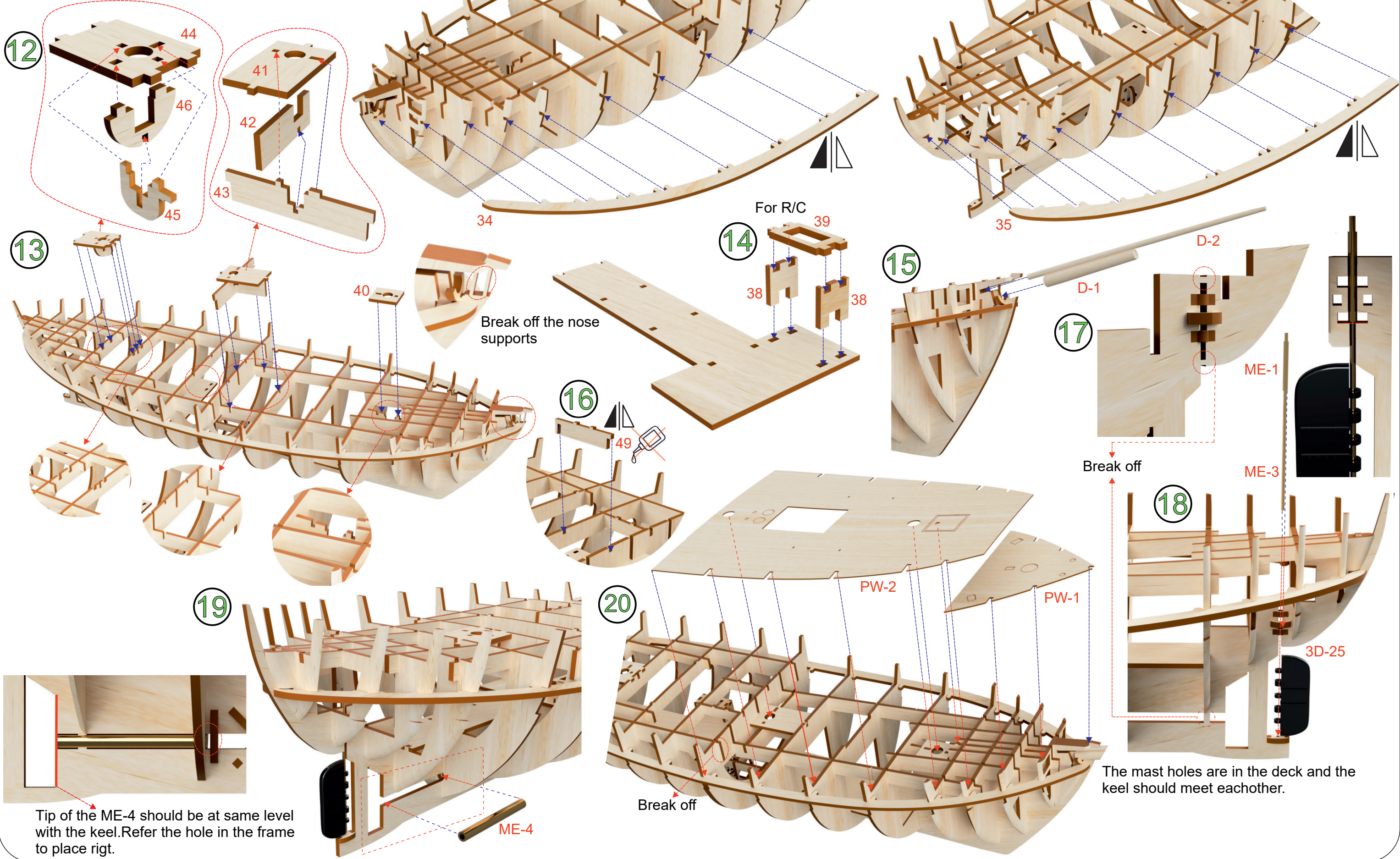
Sanding

Sand the last four and first four frames towards the tips in right angle to cover the strips on the hull right. Otherwise the hull shape might be bloat on the tips of the ship.



modell-tec

Polarskipet FRAM - I 1/50



10

11

12

13

14

15

17

16

19

20

18

Tip of the ME-4 should be at same level with the keel. Refer the hole in the frame to place right.

Break off the nose supports

Break off

Break off

The mast holes are in the deck and the keel should meet each other.

For R/C

ME-4

PW-2

PW-1

3D-25

ME-1

ME-3

D-2

D-1

44

41

42

43

45

46

40

49

39

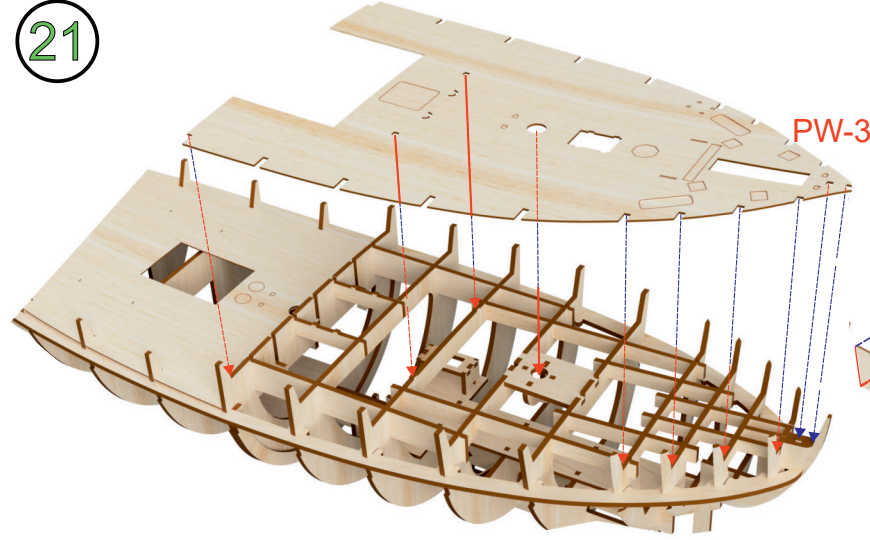
38

38

34

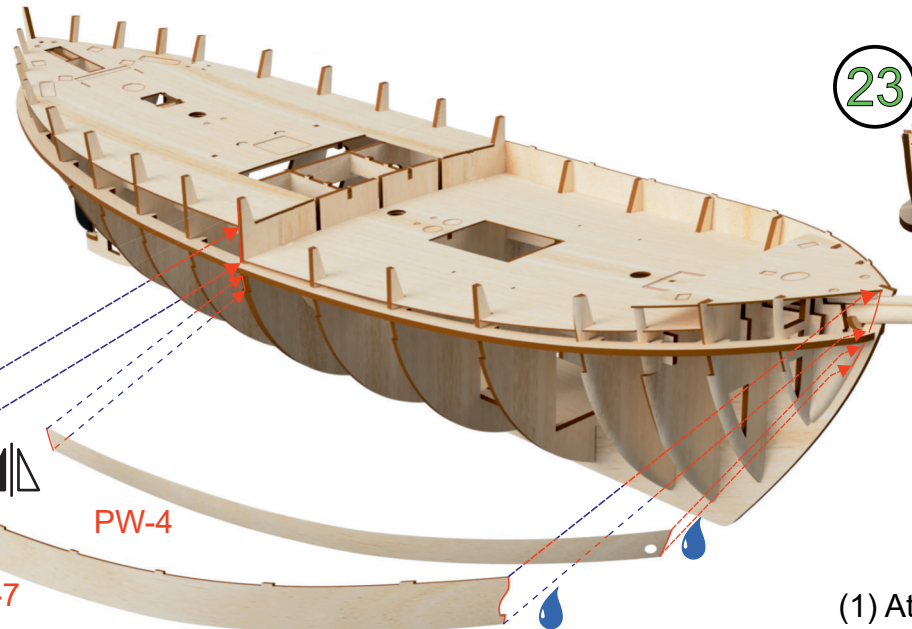
35

21



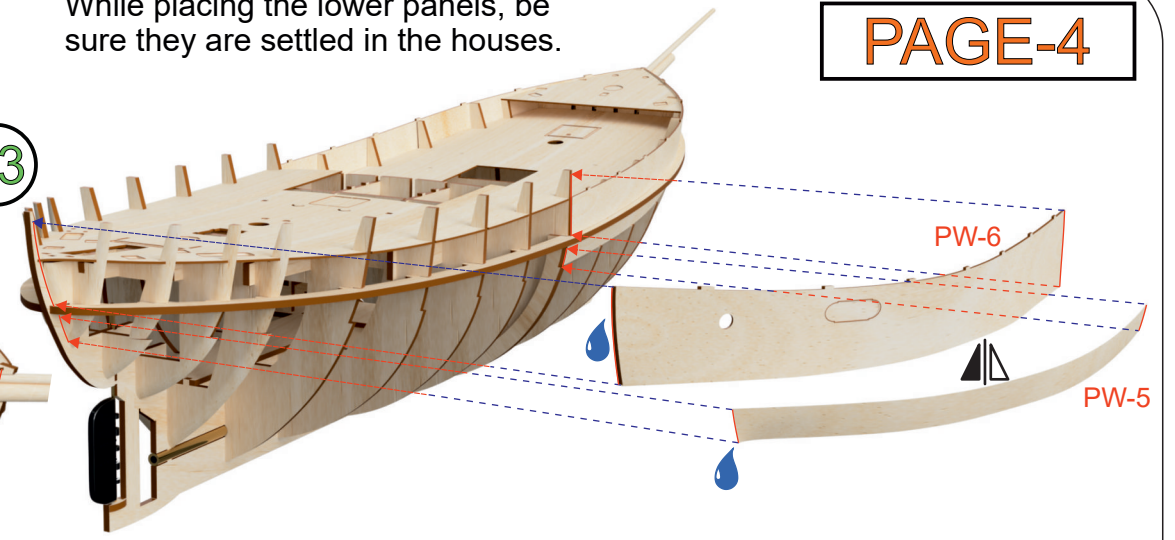
22

Start the glue the panels from the front tip. Panels have sanding partions, if long then sand carefully.



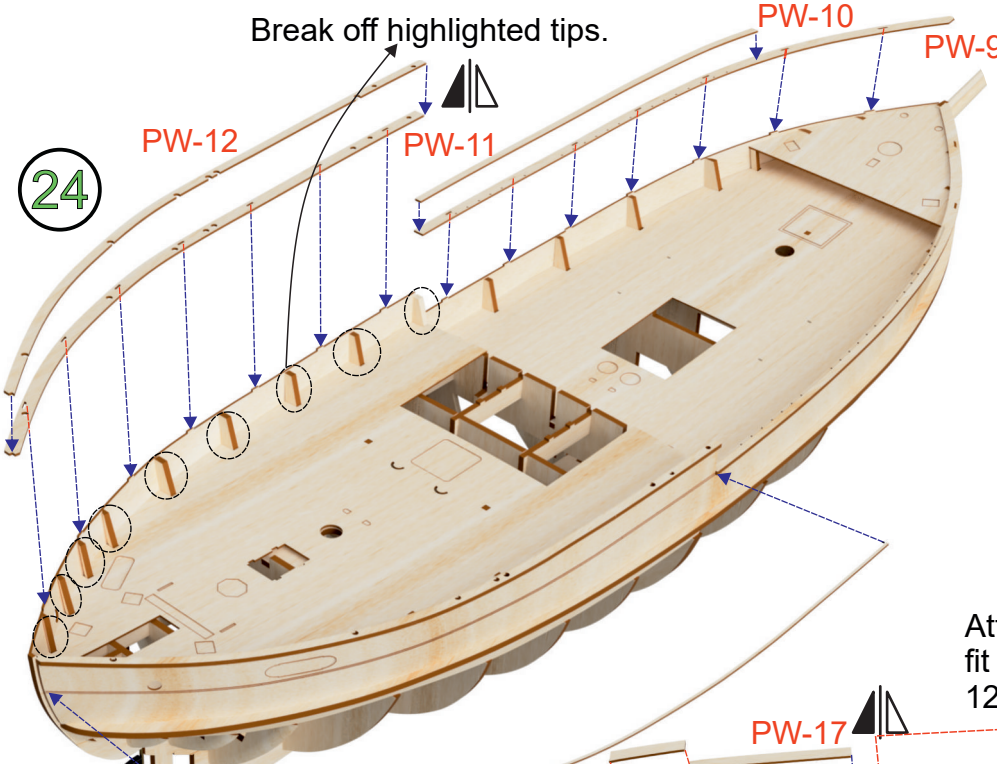
23

While placing the lower panels, be sure they are settled in the houses.

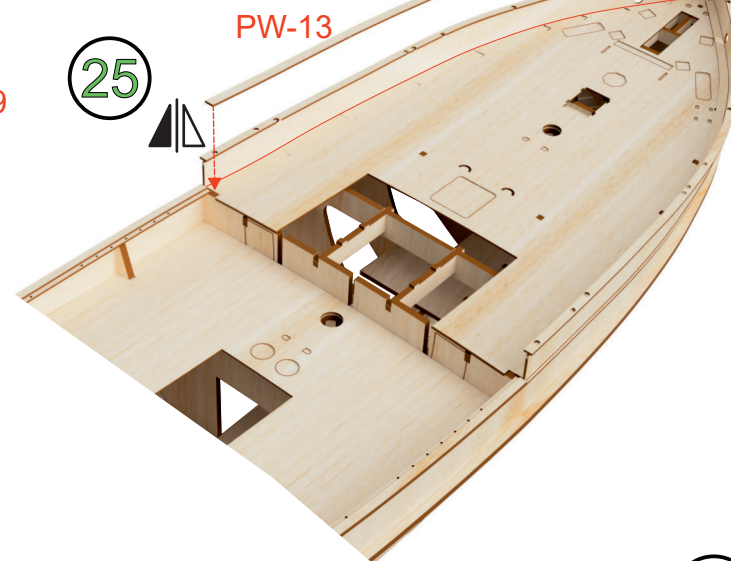


24

Break off highlighted tips.

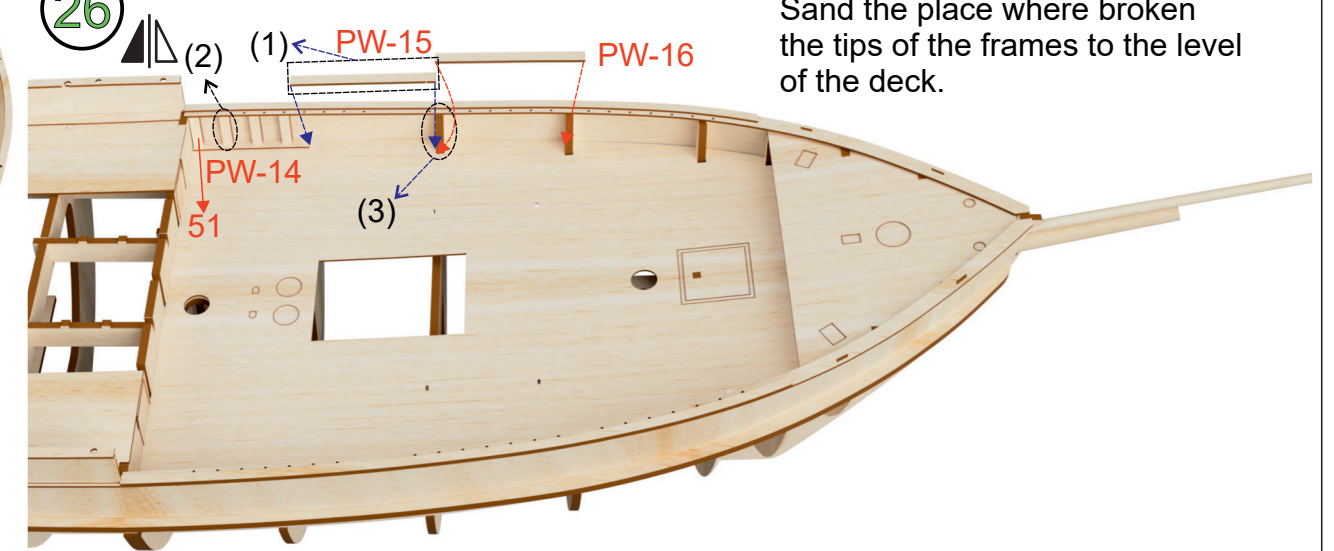


25



26

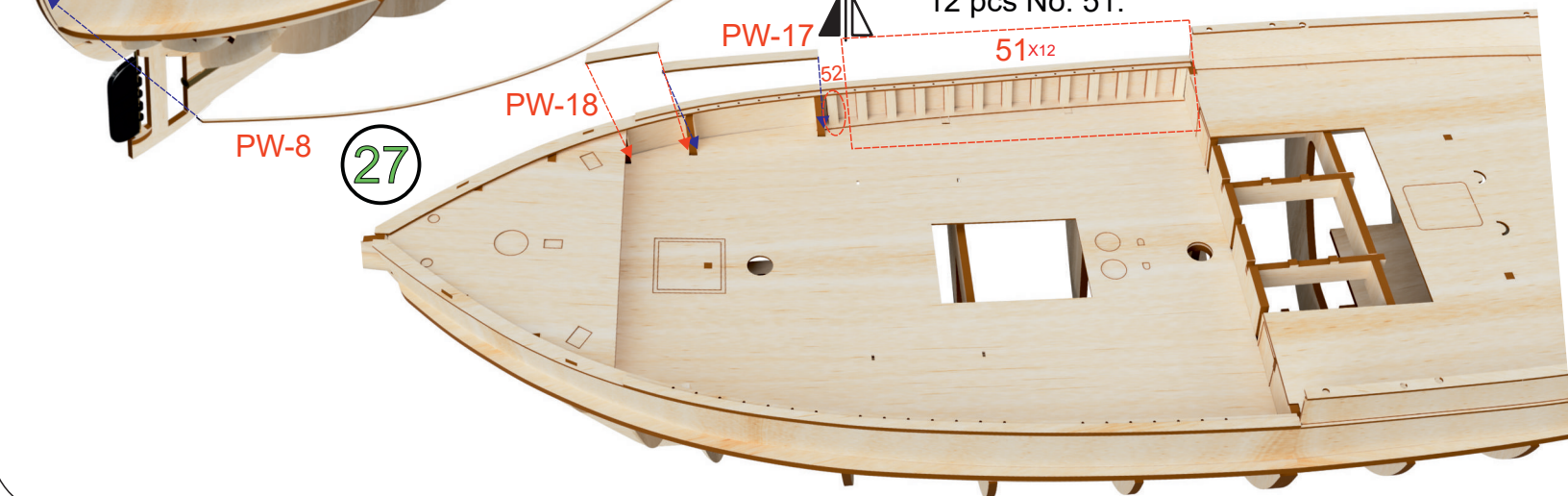
(1) Attach the lower parts (2) Attach rail supports (3) Break off the tips of the frames. Repeat the process and build the both side.



Sand the place where broken the tips of the frames to the level of the deck.

27

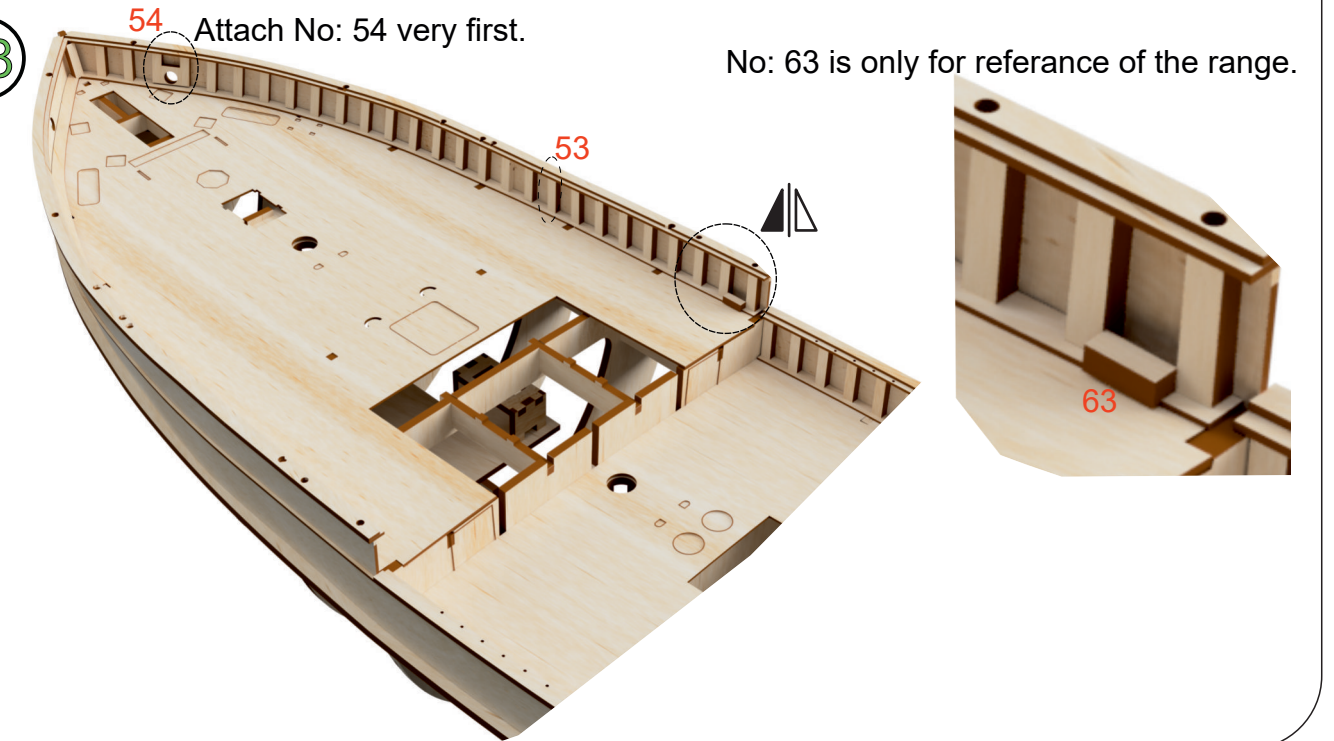
Attach the rail supports by sanding to fit their place. Pass do No: 52 after using 12 pcs No: 51.

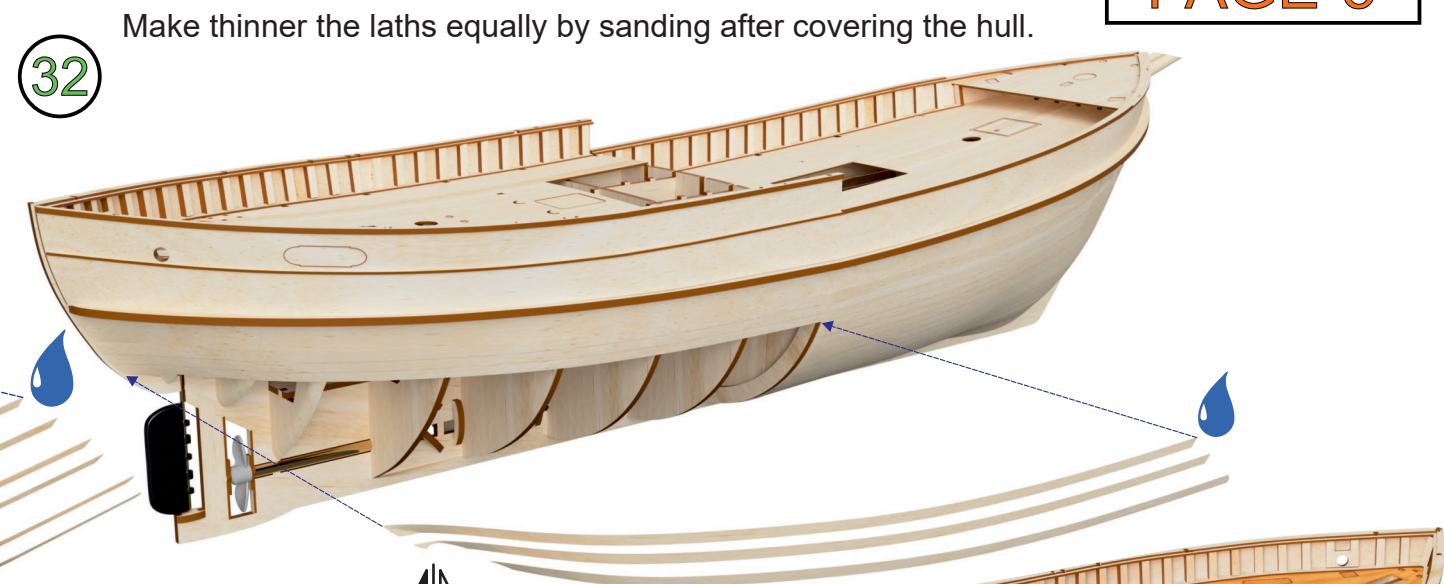
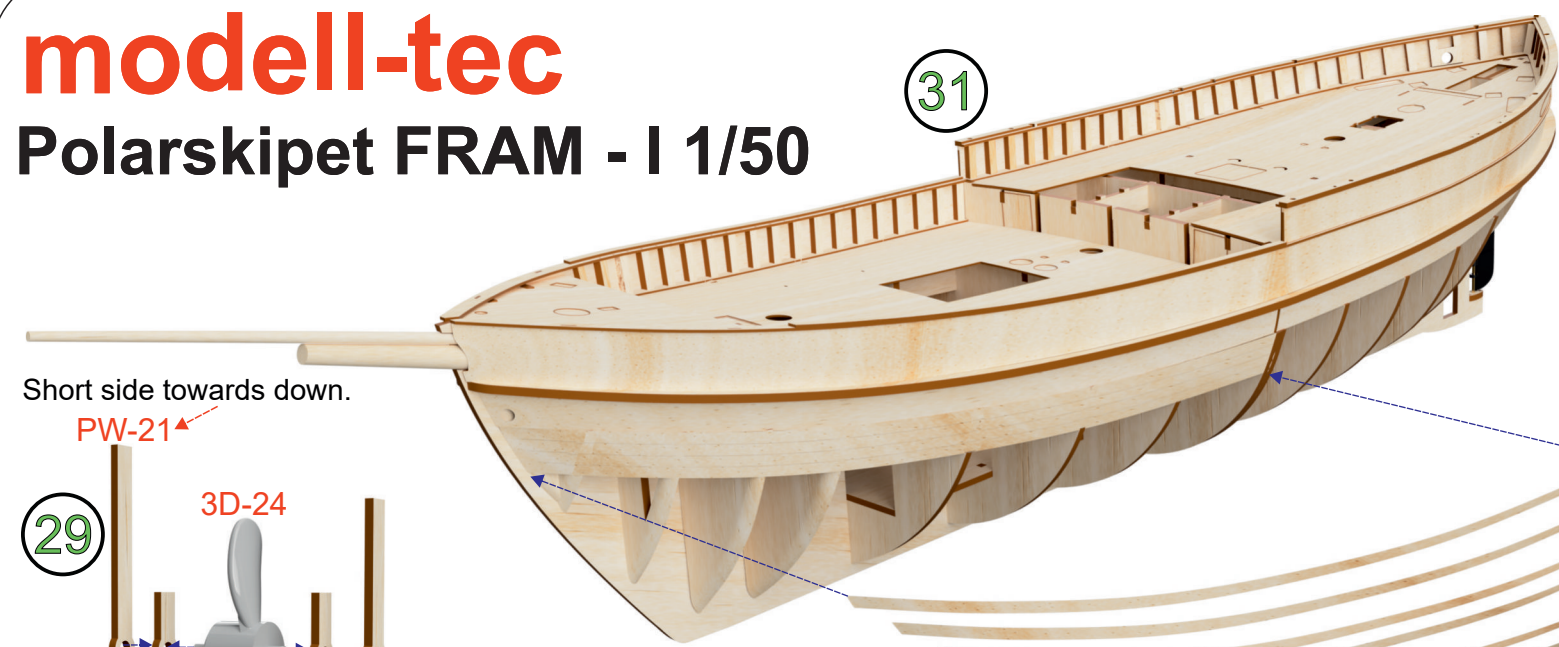


28

Attach No: 54 very first.

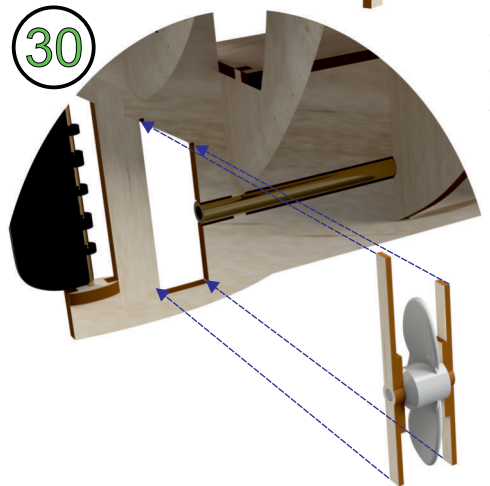
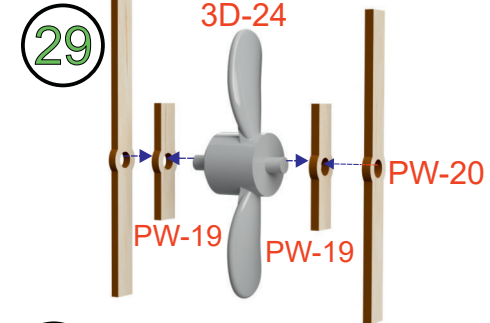
No: 63 is only for referance of the range.





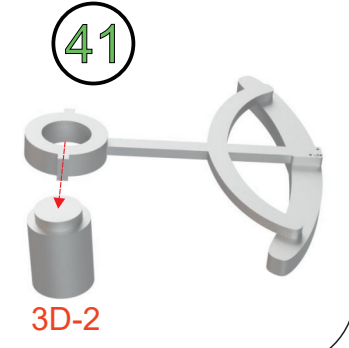
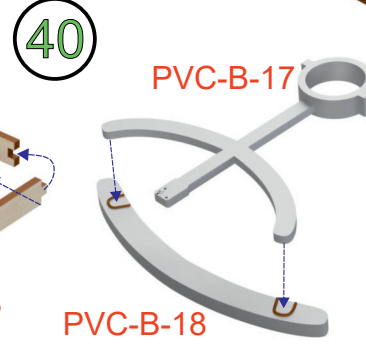
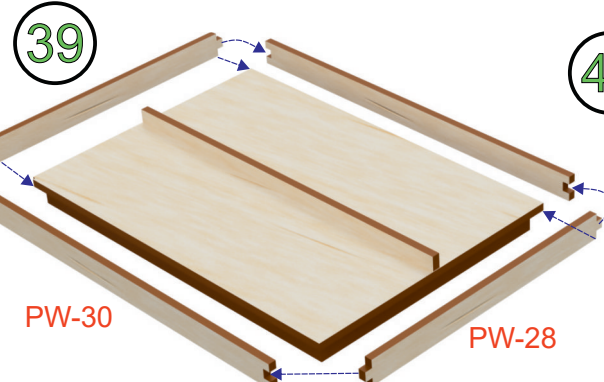
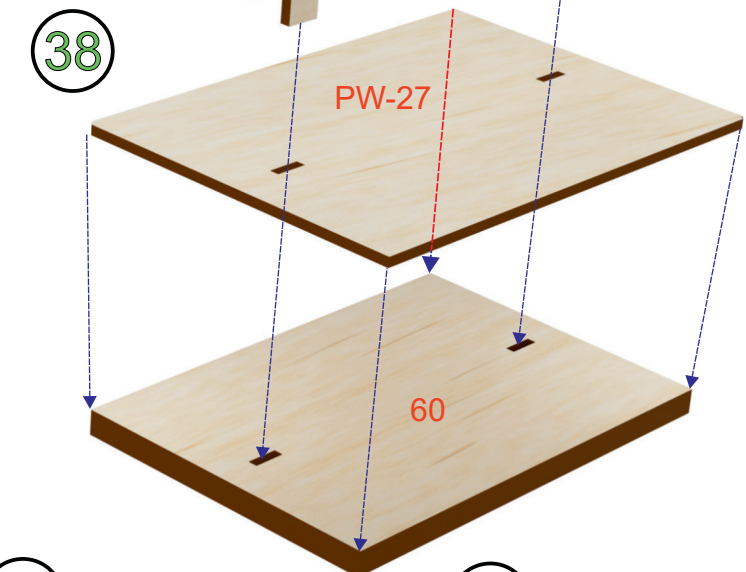
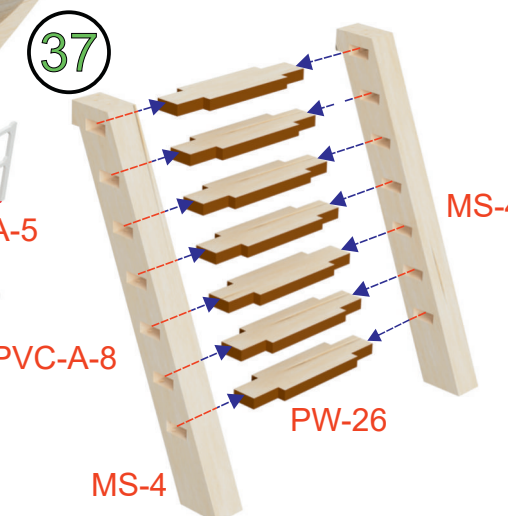
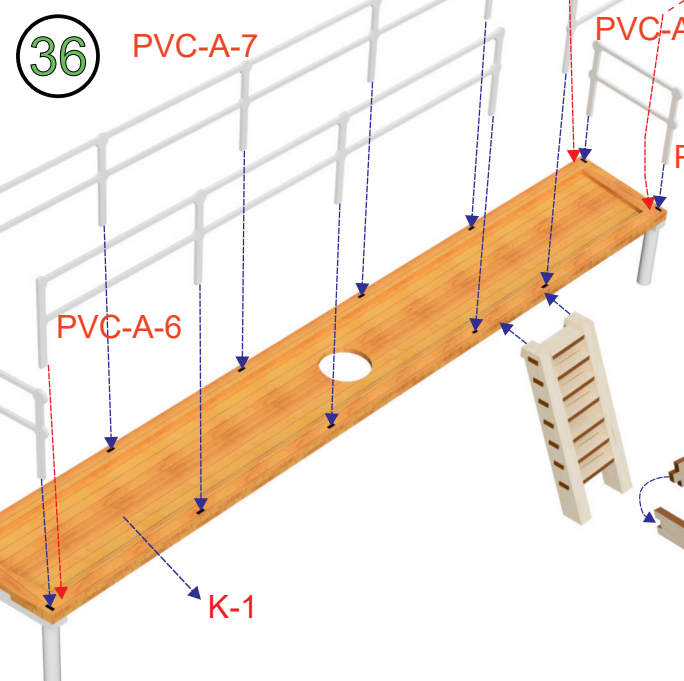
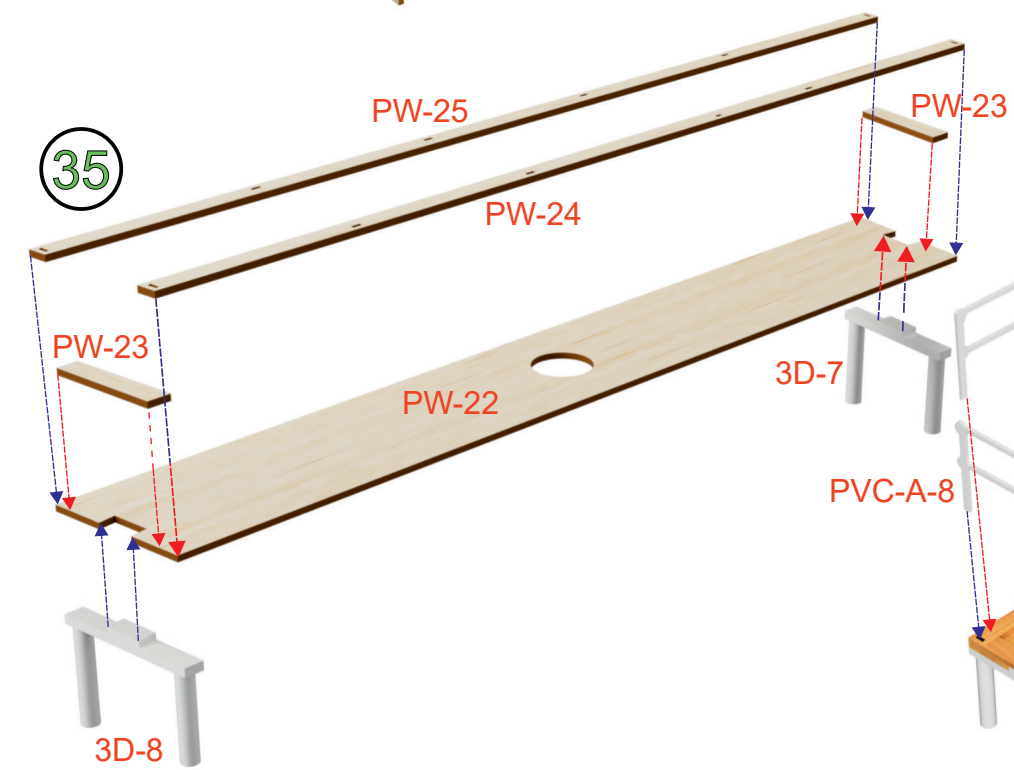
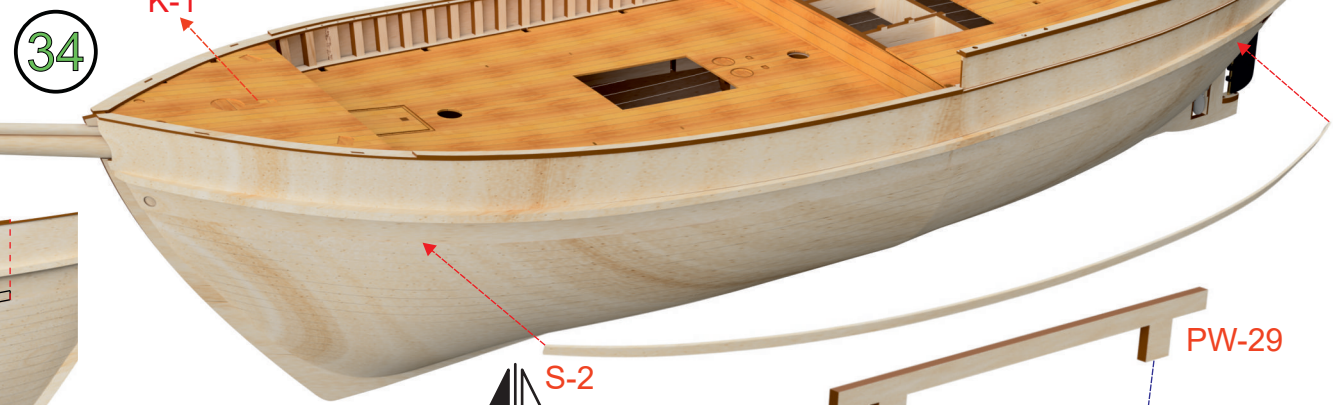
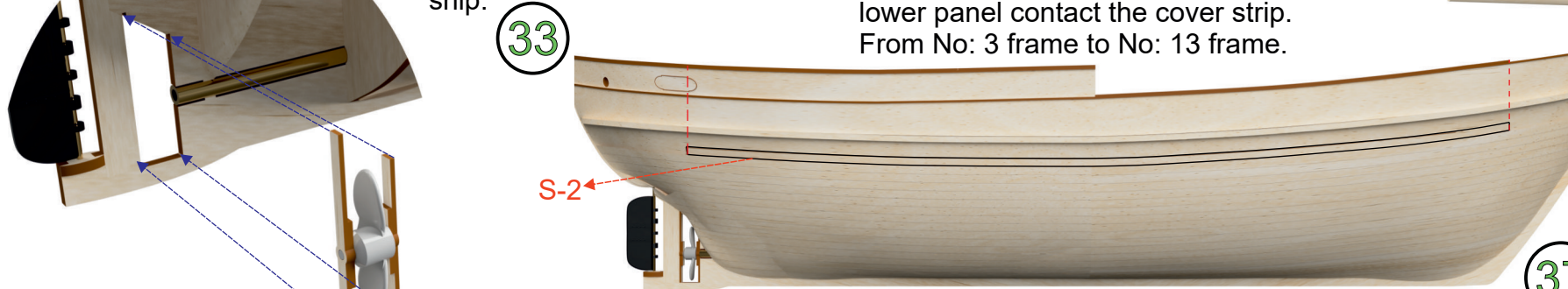
Make thinner the laths equally by sanding after covering the hull.

Short side towards down.
PW-21



Make wet and thin the tip of cover strips as shown. Start to cover from the front tip of the ship.

Cover strip reference: Where the lower panel contact the cover strip. From No: 3 frame to No: 13 frame.



modell-tec

Polarskipet FRAM - I 1/50

42

61, 62, PW-31

Bend the ladder highlighted points.

4 mm, 4 mm

S-1

Use remains pieces to cover.

43

PW-35, PW-36, PW-36, PW-34, FLX-1

Cut the aluminum sheet at length sheet width is 3mm.

44

PW-38, PW-39, PW-37, ME-2, R-6, R-5

X2

45

PW-41, 64, R-10, R-10

PVC-A-4

46

PW-40, PW-42, PW-43, PW-44, PW-45

46

PVC-A-9

x2

47

68, 69, 67, 66

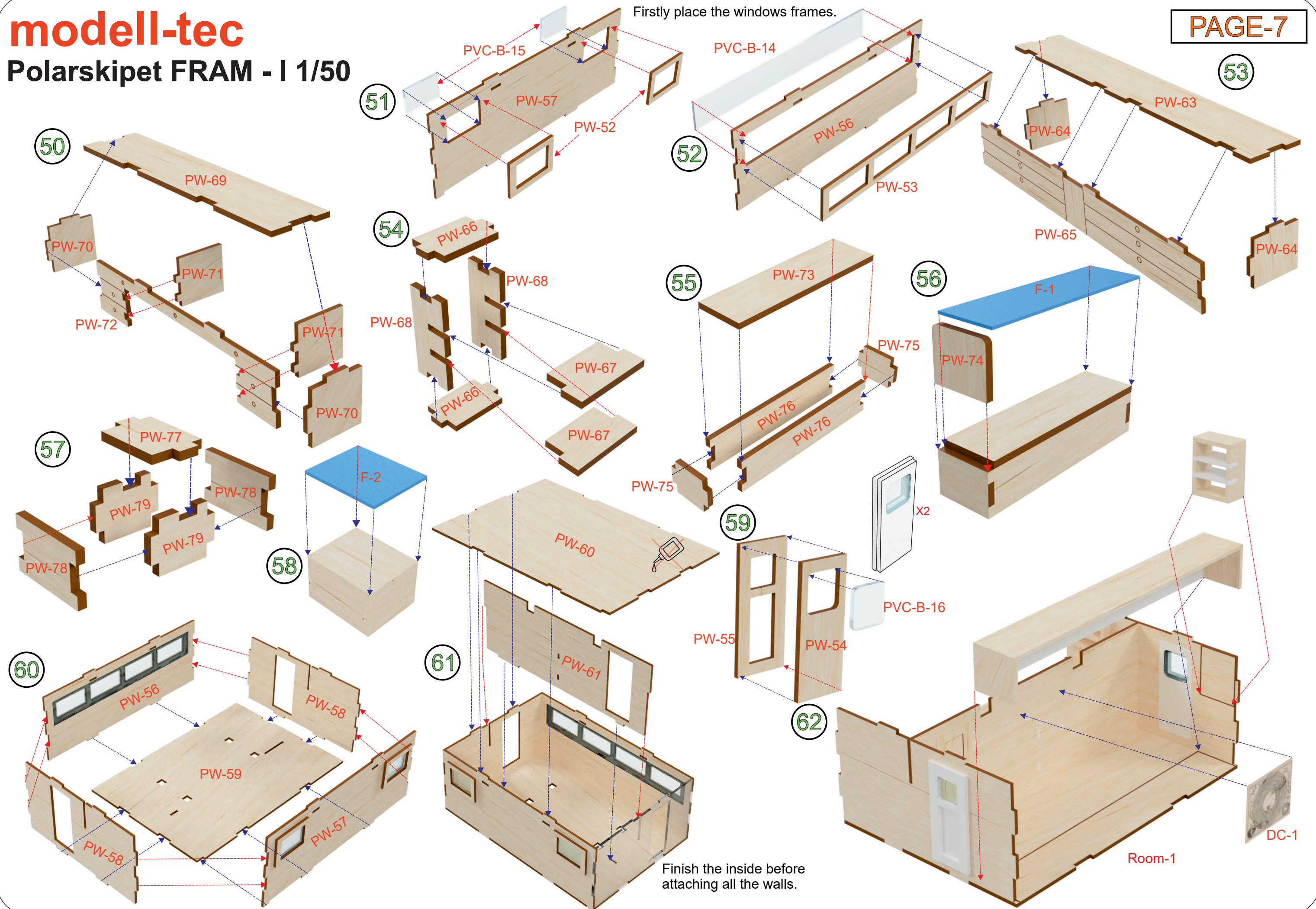
48

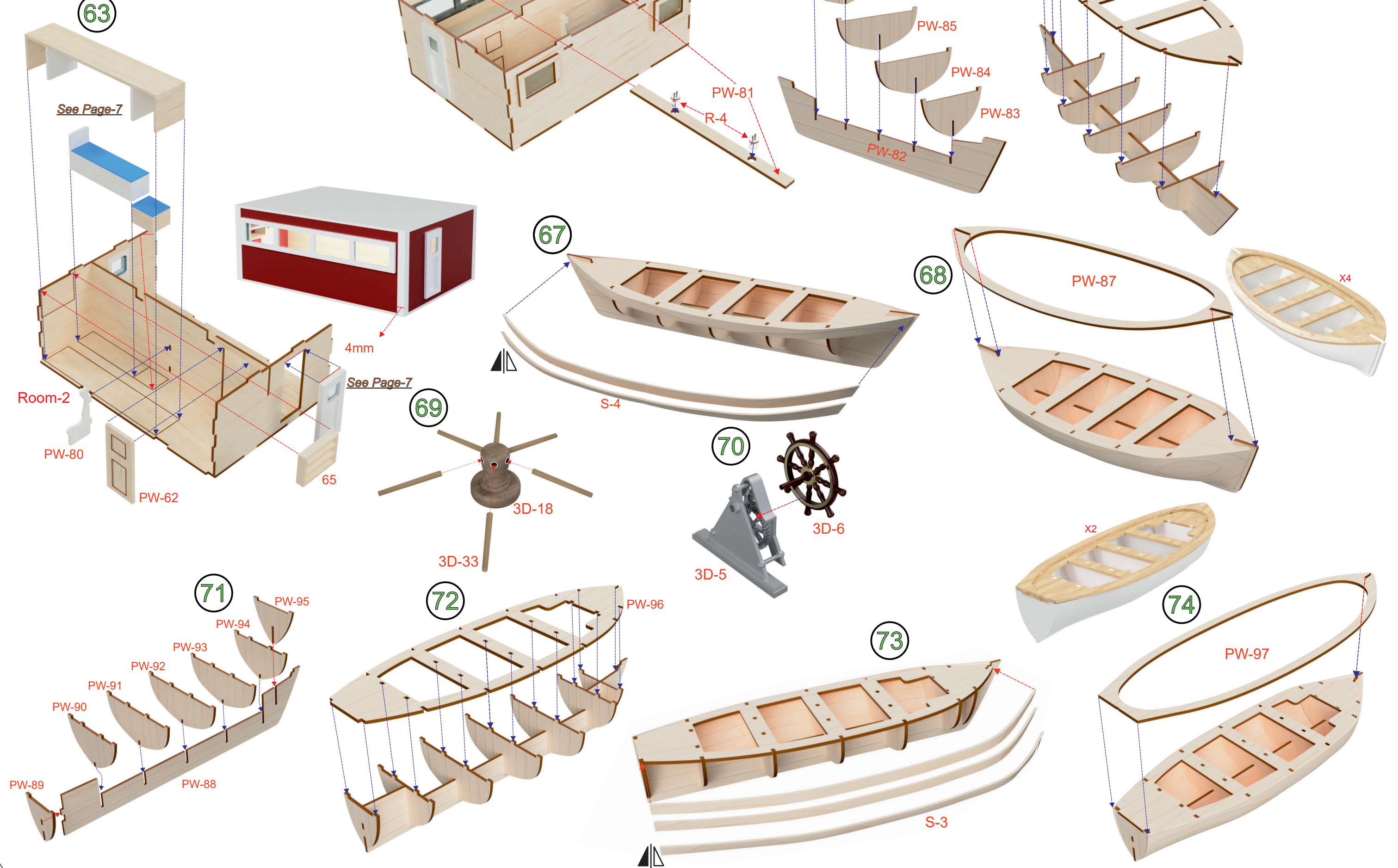
PVC-B-3, PVC-B-2 x2, PVC-B-1 x2, ME-5, ME-7, ME-6, PW-46

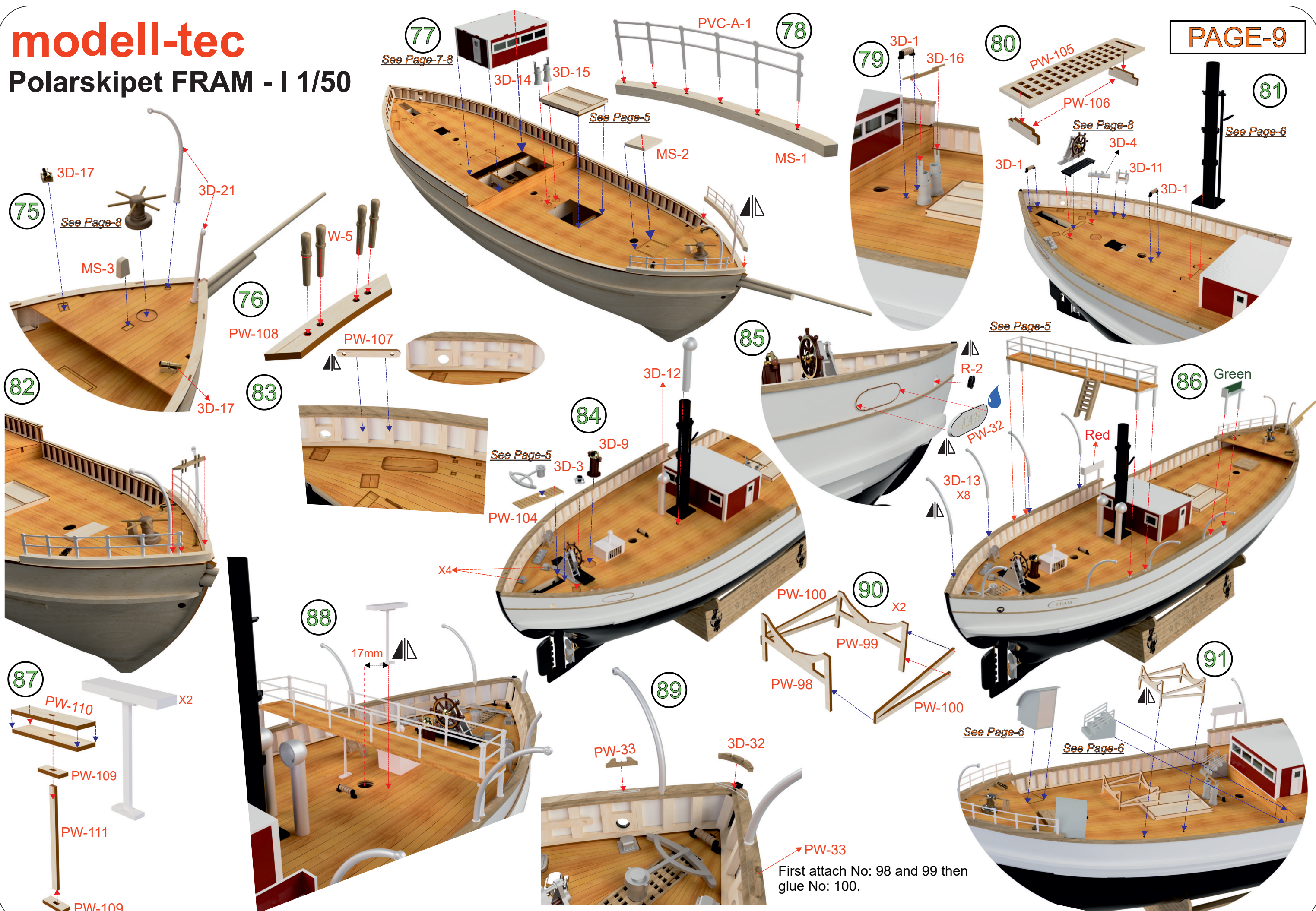
49

PW-47, PW-48, PW-49, PW-50, PW-51, 3D-10

31.5mm, 72.5mm, 110mm, 60mm







75 See Page-8
3D-17
MS-3
3D-21
3D-17

82
3D-17

87
PW-110 X2
PW-109
PW-111
PW-109

76
PW-108
PW-107
W-5

83
3D-3
PW-104

88
17mm
PW-109

77 See Page-7-8
3D-14
3D-15
See Page-5
MS-2
MS-1
PVC-A-1
78

85
3D-12
R-2
PW-32

84
3D-9
3D-3
PW-104
X4

90 X2
PW-100
PW-99
PW-98
PW-100

89
PW-33
3D-32
PW-33
First attach No: 98 and 99 then glue No: 100.

79
3D-1
3D-16

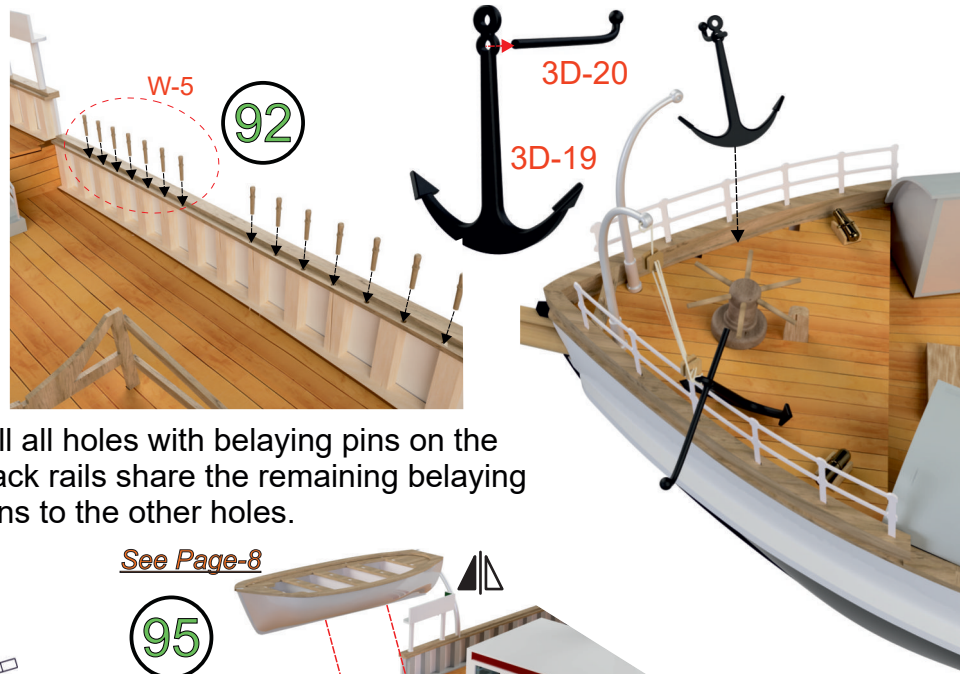
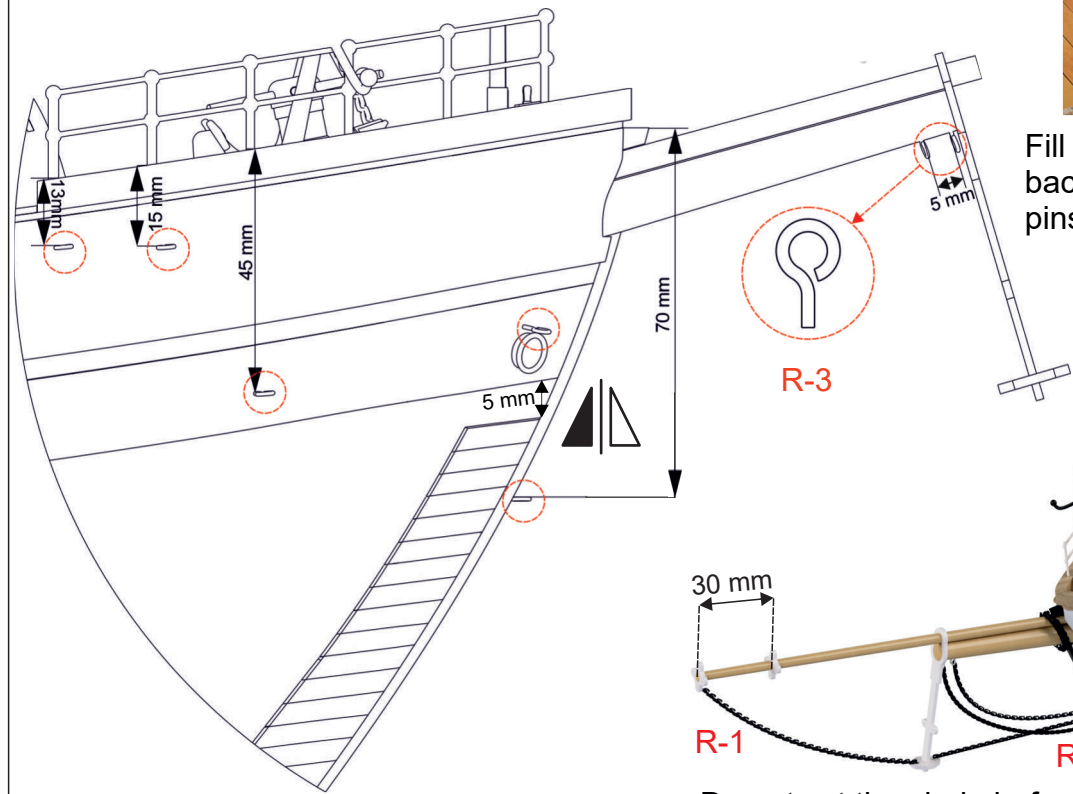
80
PW-105
PW-106
See Page-8
3D-1
3D-4
3D-11
3D-1
81 See Page-6

86 Green
Red
3D-13 X8

91
See Page-6
See Page-6

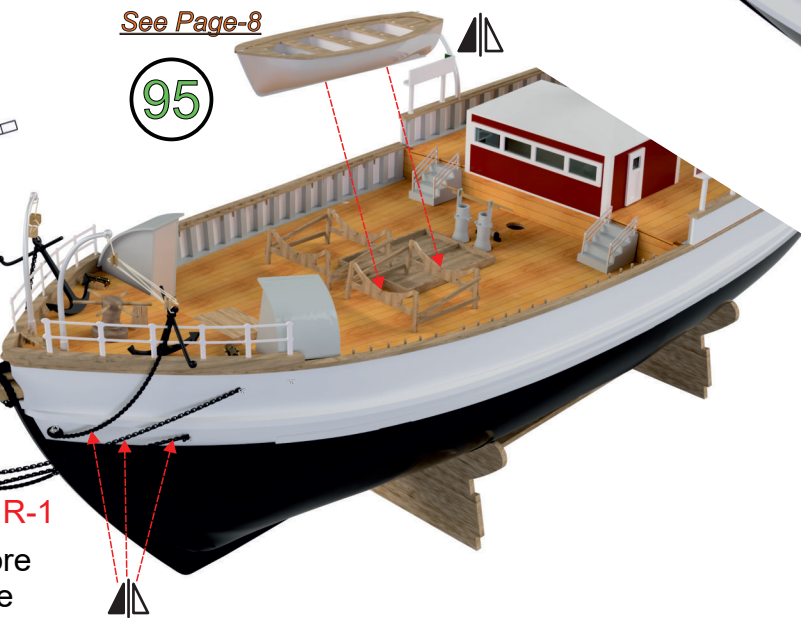
modell-tec

Polarskipet FRAM - I 1/50

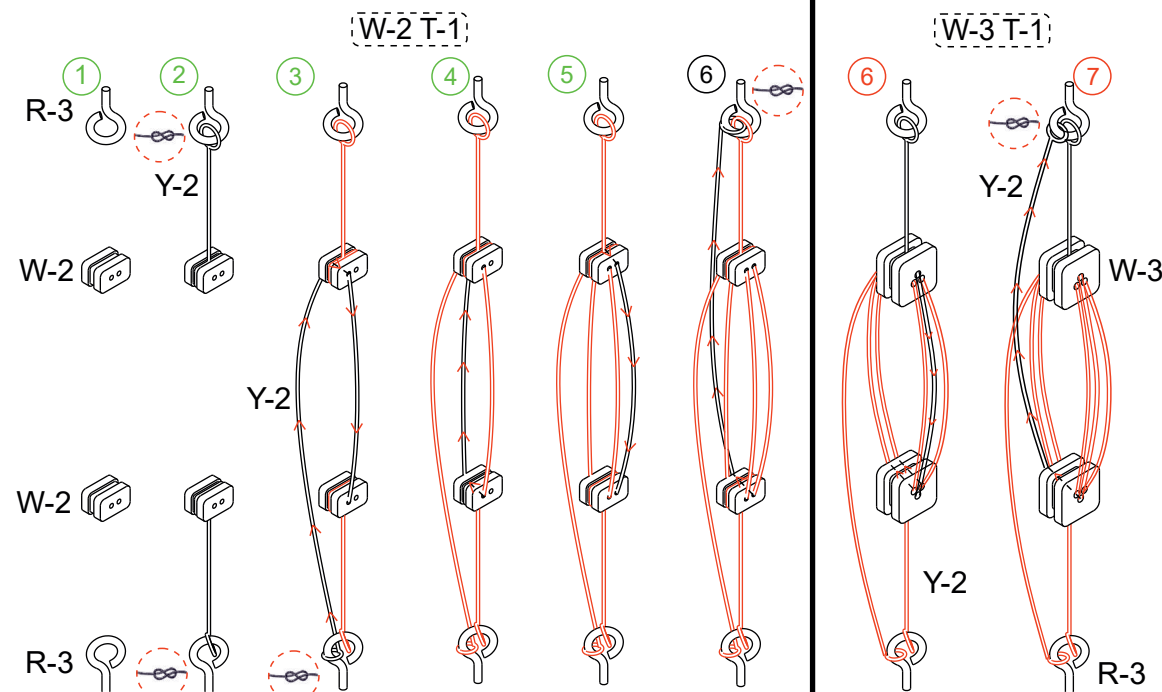
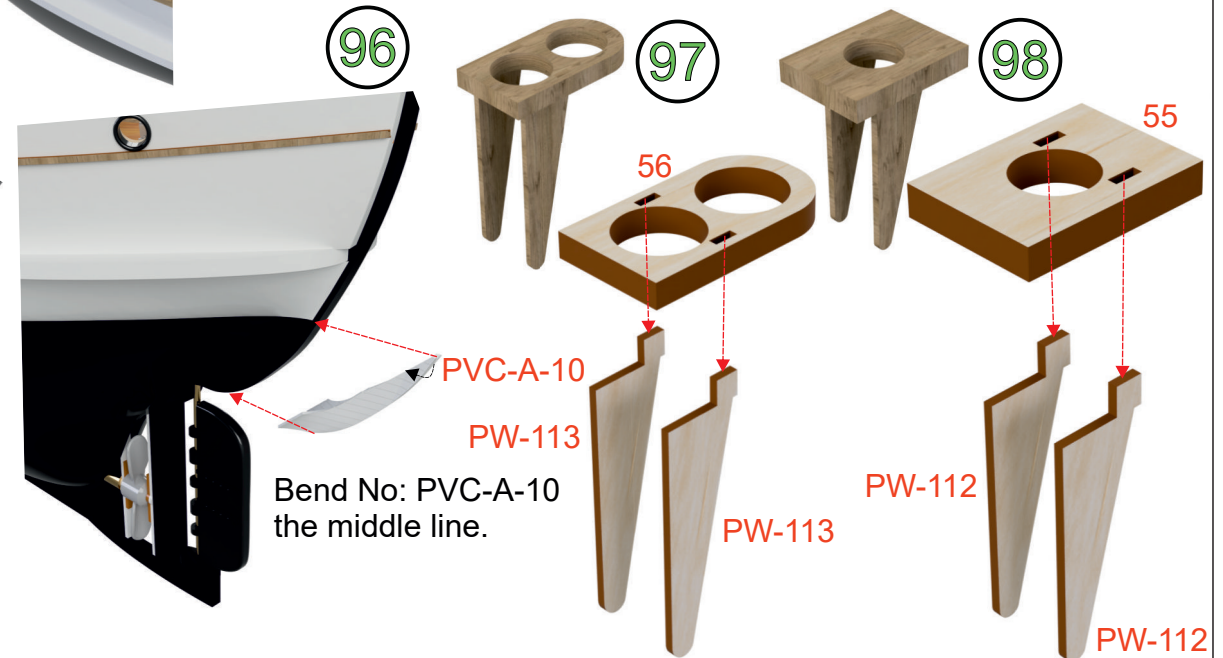
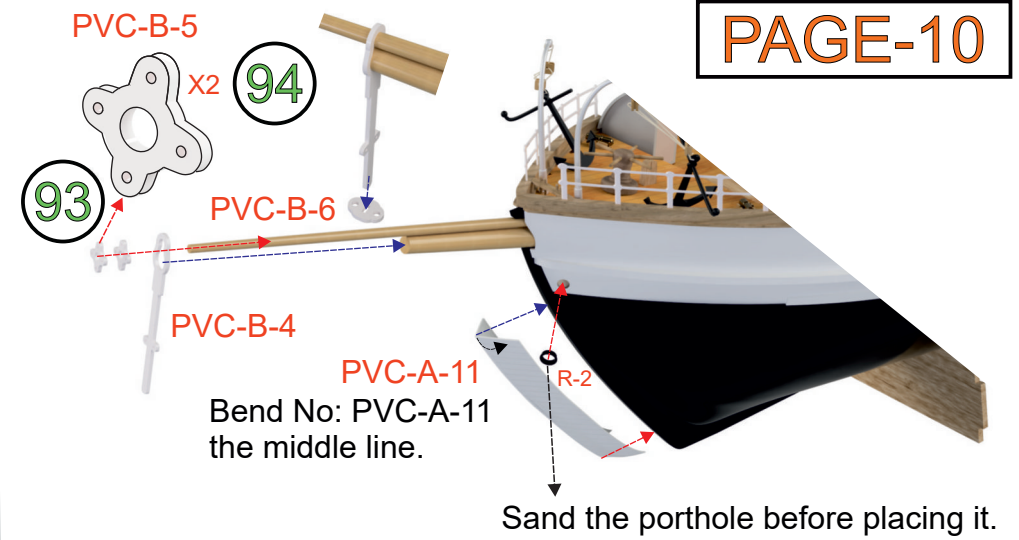


Fill all holes with belaying pins on the back rails share the remaining belaying pins to the other holes.

See Page-8



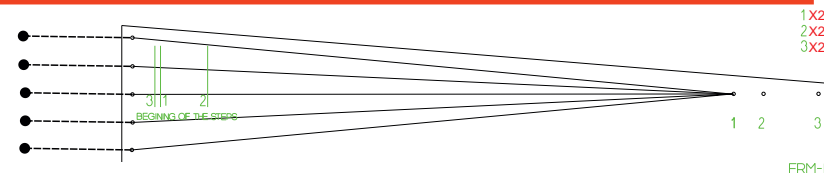
Do not cut the chain before be suring how long will be used for each section.



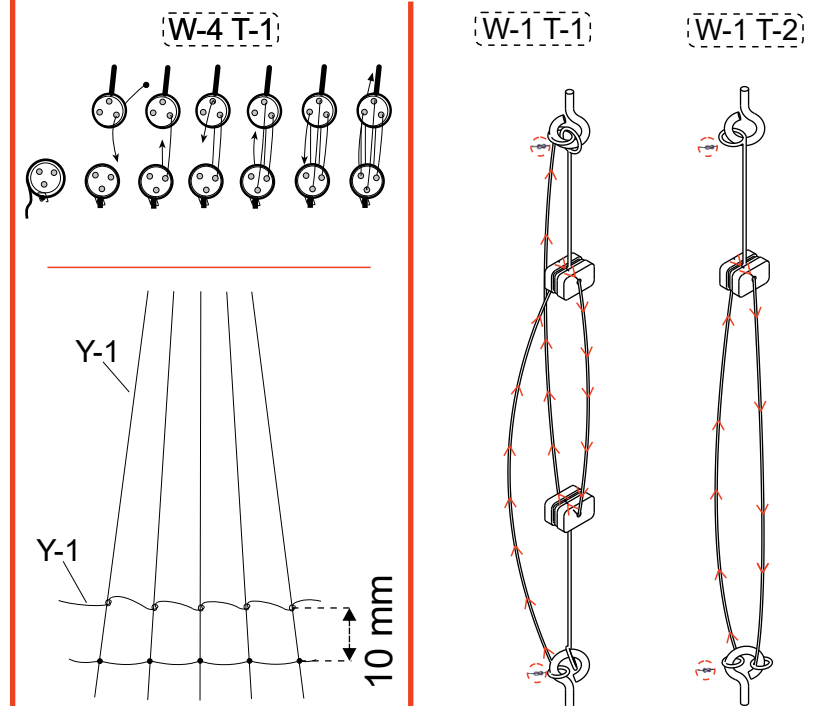
- 1: Connection parts.
- 2: Surround the rope around block and tie to the eyebolt..
- 3: Tie the tip of rope to eyebolt through the holes and following the arrows.
- 4-5: Pass the rope through the holes mentioned with arrows.
- 6: Keep the rope towards arrow direction and tie its tip to the eyebolt.
- 6: Keep the rope towards arrow direction.
- 7: Keep the rope towards arrow direction and tie its tip to the eyebolt.

Finished Stage Continuing Stage W:Part Number T:Tieing Style

Knot
 Common Stage



- 1-Front Lower Rope *Fix the rope due to numbered hole.
- 2-Back Lower Rope *Keep extra rope at the lower side to tie.
- 3-Middle Lower Rope *The lines indicate the start of the ladders step.



100

Attach front sails as shown.

101

Sew the sails as in the graphic

PW-114 Use PW-114 as cutting as much as needed. Measure the rope range and cut

ME-8 DC-2

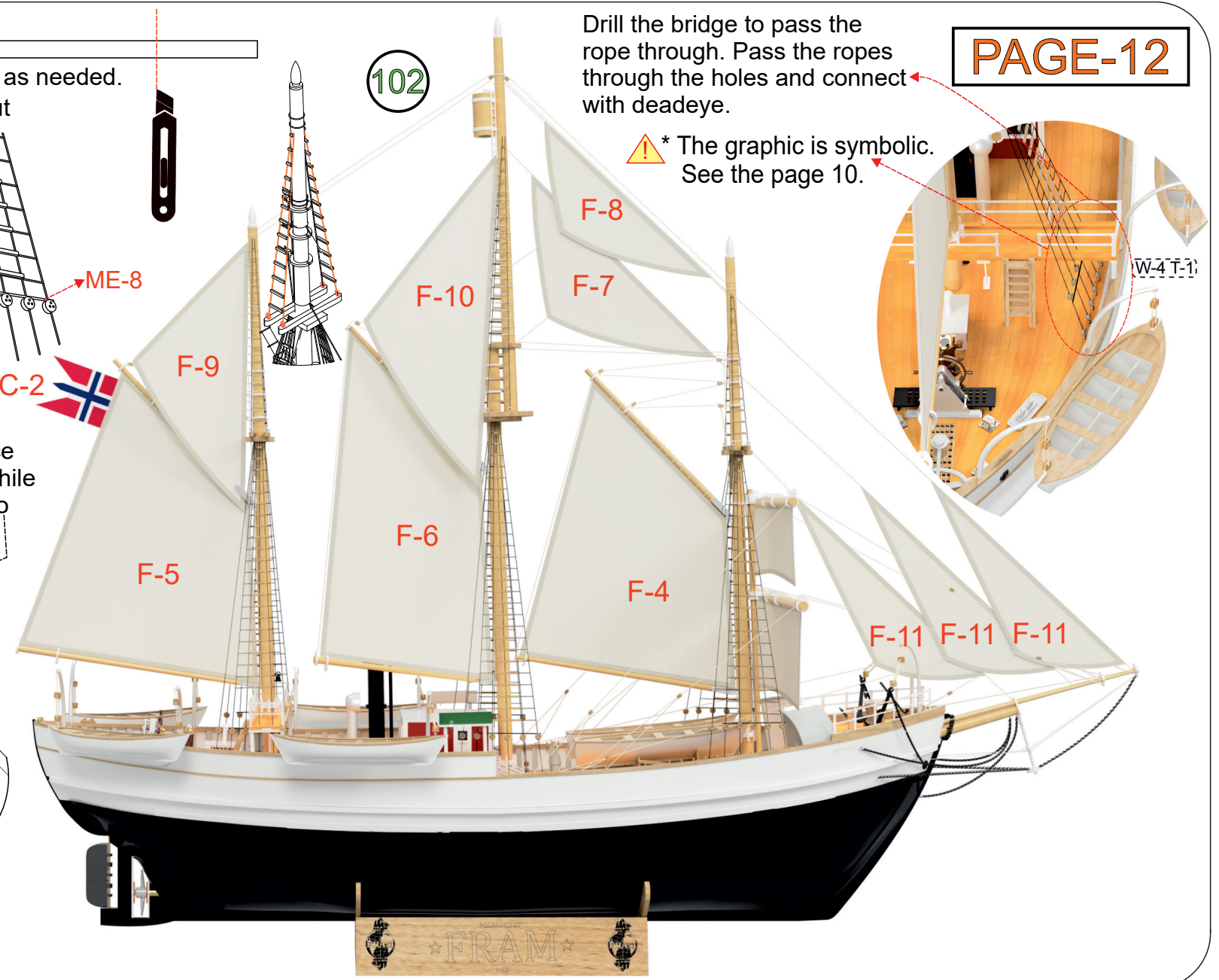
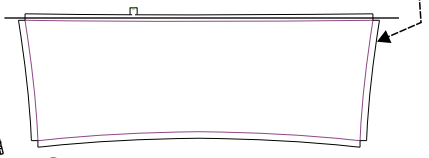
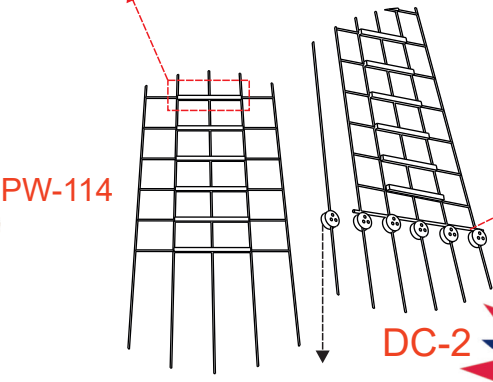
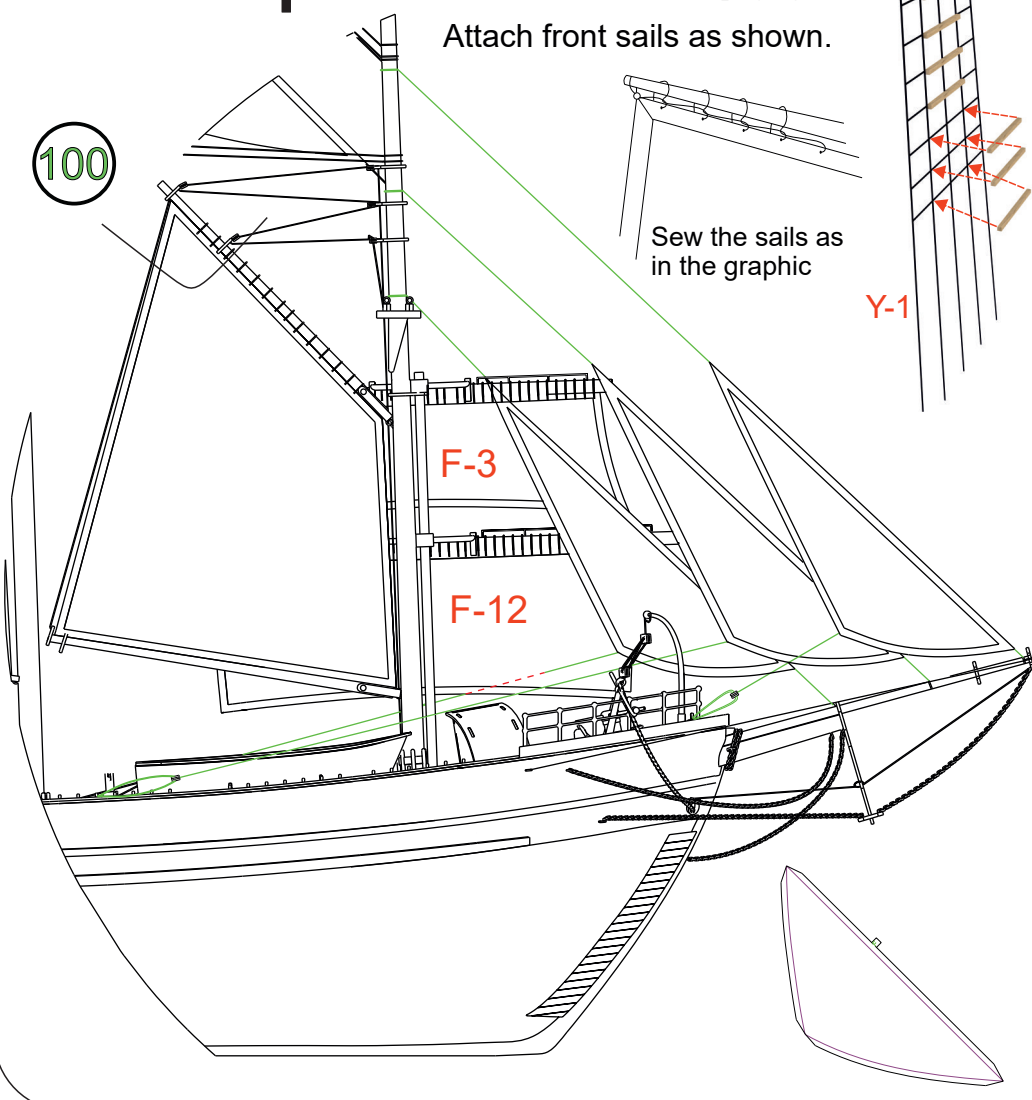
Fold the sails at folding space and attach the rope inside while gluing. Let extra long rope go out to tie.

Cut the number patch on the sails.

102

Drill the bridge to pass the rope through. Pass the ropes through the holes and connect with deadeye.

* The graphic is symbolic. See the page 10.



LED SET-UP

You will find out how to set lights up in this page. The first rule is each 3 leds connected serial. So, the light sets exist bunch of 3 serials in every deck. Cooper cable is isolated, so when you set it, sand or fire the tips to unisolate. The tip of the resistance is unimportant. Any tip can be connected to the serial leds.

Wherever you would like to put a led, penetrate 3 mm the led platform and place the led into. Then glue the led there but do not use over the glue, just tiny.

Test the leds on every stage If they work properly. If the leds are blinking, the energy source's amper is not enough. If there is no light at all, then check cables these might not be unisolated well or disconnected.

Connect the cables and the other components soldering. If you are not expert on soldering, get and support from an expert.

Though the cooper wire is unisolated, it might lose its feature by the time. If they are cross anywhere, put a small separator to keep it away from short circuit.

By the time, some leds might be died. In this situation, test the serial that covers that led and resistance. If you do not have a equipment to test, then just swap those 3 serial leds and resistance with new ones.

Collect the deck cables into a tip of a jack. The other tip of jack should connected to the energy source. You do this for every deck it might be needed to remove. It is going to make easier to disattach the decks. Easily you will plug off the led connections to make free the decks.

Watch out collecting (+) and (-) will be right.

