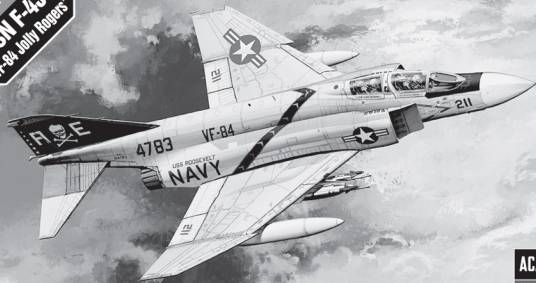


SCALE
1/48
USN F-4J
"VF-84 Jolly Rogers"



ACADEMY
HOBBY MODEL KITS

12305

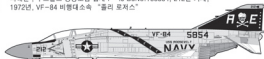
Warning in Assembly of Model Kits
조립전의 주의사항

Take care not to injure yourself while using the modeling tools to cut or trim parts.
공구를 이용하여 부품을 다듬고 자를 경우, 손을 다치지 않도록 주의를 기울여 주십시오.

① 미국군, 루즈벨트 항공모함 탑재 F-4J BuNo.154783 211번 기체,
1972년, VF-84 비행대 소속 "올리 로저스"



② 미국군, 루즈벨트 항공모함 탑재 F-4J BuNo.155854, 212번 기체,
1972년, VF-84 비행대 소속 "올리 로저스"



MAIN COLOR

PAINT INDEX	WHITE FS17875 항공 백색				GLOSS BLACK FS17038 유광 검은색				LIGHT GULL GRAY FS16440 라이트 걸 그레이			
	Humbrol		GSI Creos		TESTORS / MODELMASTER		Revell		Vallejo			
	ENAMEL	ACRYL	AQUADES HOBBYCOLOR	M. COLOR	Lifecolor	ENAMEL	ACRYL	ENAMEL	ACRYL	MODEL COLOR	MODEL AIR	
WHITE FS 17875	22	22	H316	316	LC51	1745	4696	32104	36104	842		항공 백색
FLAT BLACK FS 37038	33	33	H12	33	LC02	1749	4768	32108	36108	950	57	무광 검은색
DARK GULL GRAY FS 36231	140		H317	317	UA033	1740	4755	32179	36179	991		다크 걸 그레이
YELLOW FS 12538	188		H329	329	LC53	1707	4683	32310	36310	953	2	노란색
SILVER	11	11	H8	8	LC74	2914	4678	32190	36190	997	63	은색
BURNT IRON			H76	61								번트 아이언
CLEAR RED	1321		H90	47			4630			934		투명 빨간색
CLEAR BLUE	1320		H93	50			4658			938		투명 파란색
RED FS 11136	19	19	H3	3	LC56	1503	2741	32131	36131	957	84	유광 빨간색
GLOSS BLACK FS 17038	21	21	H2	2	LC72	1747	4695	32107	36107	861		유광 검은색
KHAKI GREEN			H80	54								카키 그린
OLIVE DRAB FS 36087	155		H52	12	UA003	1711	4728			887	43	올리브 드라브
FLESH	61	61	H44	51	LC21	1516	1153	32135	36135	955	76	피부색
LIGHT GULL GRAY FS 16440	183		H315	315		1729	4692					라이트 걸 그레이
STEEL	53	53	H18	28	LC76	1795	4681	32191	36191	863	72	스틸
RADOME TAN FS 35613	148		H318	318		1709	4722			917	74	레이돔 탄

Guide for Beginners
입문자를 위한 가이드

Water-Slide Decals / 습식 전사지 (데칼) 부착 방법



Cut desired part of decal sheet with scissors.

사용할 전사지(데칼)이 있는 부분을 가위로 잘라냅니다.



Water (15 ~ 22°C)

Float the cut decal on water for 10 ~ 30 seconds.

잘라낸 전사지를 물에 띄워 약 10 ~ 30초 동안 불립니다.



Take out the decal sheet from water and paste it to the designated area with precision tweezers.

물에서 꺼낸 전사지를 부속 부위에 정밀 핀셋을 사용해 부착합니다.



Remove water or air on the surface of decal sheet with soft towel, tissue or cotton swab.

남은 물기 및 기포는 면봉, 타슈, 부드러운 수건을 이용하여 제거합니다.



CAUTION! <READ THIS BEFORE YOU BEGIN>
 <ALLGEMEINE HINWEISE>
-주의-
 <LISEZ CE QUI SUIT AVANT DE COMMENCER LE MONTAGE>
 <組み立てる前に>
 <조립하기 전에 읽어 주십시오.>

<READ THIS BEFORE YOU BEGIN>
 <Study the instructions before assembling> - Check the fit of each piece before cementing into place.
 <Do not use too much cement to join parts.> - Never use cement or paint near open flame.
 <Open a window or make area well ventilated when cement or paint is in use.>
 <Tear up and throw away the empty plastic bags to avoid danger of suffocation for little children.>

<ALLGEMEINE HINWEISE>
 <Die Anordnung der Bauteile ist aus den Zeichnungen der Anleitung ersichtlich.>
 <Die Teile vor dem Verkleben sorgfältig zusammenhalten, um ihren Sitz zu prüfen.>
 <Klebstoff nicht zu dick auftragen.> - Klebstoff und Farben niemals in der Nähe einer Flamme verwenden.
 <Während der Bemalung mit Sportpistole oder Pinsel für frische Luftzufuhr, z.B. öffnen des Fensters, sorgen.>
 <Bausatz von kleinen Kindern fernhalten. Verhüten Sie, daß Kinder irgendwelche Bauteile in die Mund nehmen oder Plastikbeutchen über den Kopf ziehen.>

<LISEZ CE QUI SUIT AVANT DE COMMENCER LE MONTAGE>
 <Étudiez les schémas d'assemblage.> - Contrôlez que chaque pièce soit bien conforme avant de la coller à sa place.
 <N'utilisez pas trop de colle pour réunir les pièces.> - Ne tentez manipuler la colle ou peinture à proximité d'une flamme.
 <Appliquez soigneusement la colle ou vous peindre (ouvrir la fenêtre).>
 <Après avoir sorti les pièces du sac en plastique, déchlorer le sac afin d'éviter que les enfants ne le mettent sur la tête et ne s'étouffent.>

<組み立てる前に>
 <組み立てる前に各部分の適合を確認下さい。> - 接着剤や塗料を使用する時は炎のそばに近づかないで下さい。
 <接着剤や塗料を塗るときは窓を開けたり換気扇を回して下さい。>
 <接着剤や塗料を塗るときは火のそばに近づかないで下さい。>
 <組み立てた部品がビニール袋に入らないよう袋の口をしっかりと閉めて下さい。>

<조립하기 전에>
 <부품을 조립하기 전에 설명서를 잘 읽어본 후 조립한다.>
 <접착제나 페인트를 칠할 때 불꽃에 주의한다.>
 <부품을 지를 때에는 접착제나 페인트를 적당히 칠한다.>
 <접착제를 사용할 곳과 시칠하지 않는 곳에 주의해서 너무 많이 바르지 않도록 한다.>
 <에너지를 사용하거나 스포츠용 브러시나 솔을 사용하여 환기를 시키고 화기를 멀리한다.>
 <사용 후 남은 부품은 어린 아이들이 손에 닿지 않도록 잘 치운다.>

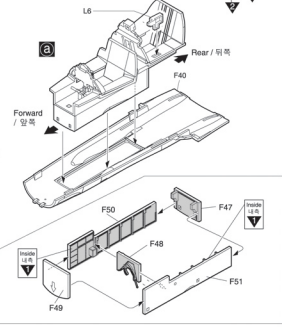
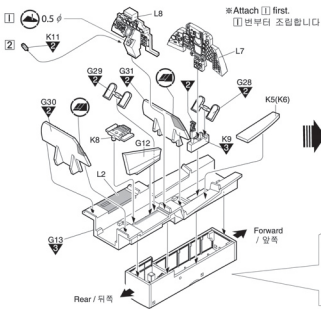
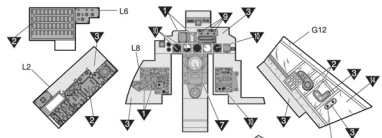
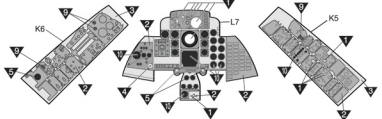
도색하기 Paint parts Color Kleben	도색하기 Do not use too much cement Do not use too much paint Nicht kleben	2 수리할 곳입니다 Repair location Reparatur-Ort Wartung wiederholen	DECAL 스티커를 붙입니다 Stickers Decalcomans Aufkleber	9 무거운 것을 붙입니다 Use heavy Lester Gewicht	9 같은 것이 여러 개입니다 Use the Multiple Schrauben
잘라내기 Cut easily Schneiden	선택적인 부품입니다 Optional parts Zusatzteile Auswahlpotezial	2 반복해서 작업합니다 Repeat for apposite site Repetition de la page Wiederholung für gegenüberlie- gende Seite	9 기둥을 돌출합니다 Make hole Cave un Höhen	9 주의합니다 Be careful Have attention Hut Verwunden	1 작업 순서도 번호가 붙어 있습니다 Painting scheme number Numéros de la liste de peinture Lackierreihennummer

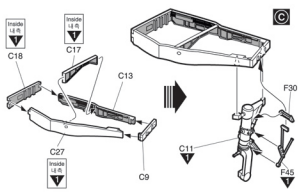
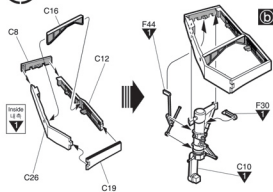
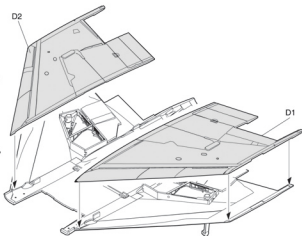
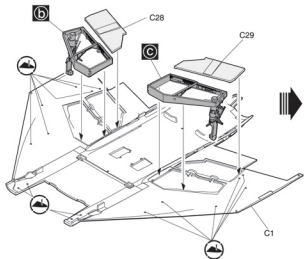
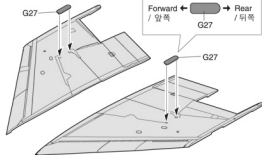
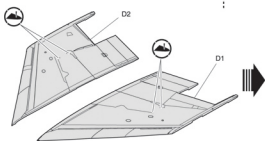
1

How to Painting of Instrument Panel
 / 계기판 색칠하는 방법

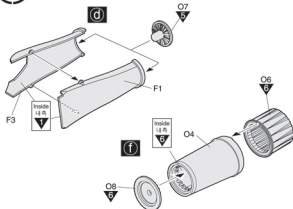


계기판처럼 작은 부품은 먼지에서 떼어내기 전에 색칠하는 것이 보다 편리합니다.
 Paint small parts like a instrument panel before them from the frame.
 유리 장갑은 밑색을 칠한 후 클리어 도료를 한방울 떨어뜨려 표면을 보호할 수 있습니다.
 To expose texture of glass by dropping a drop of clear paint.

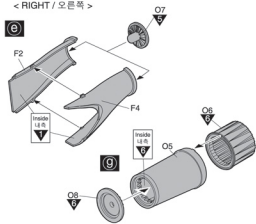


2**3****4**

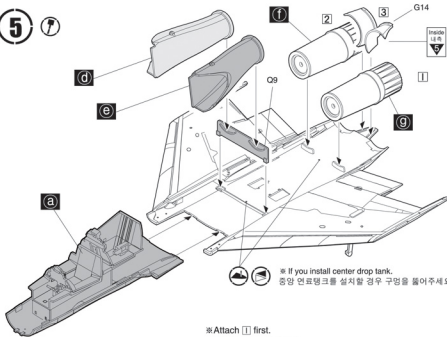
< LEFT / 좌 >



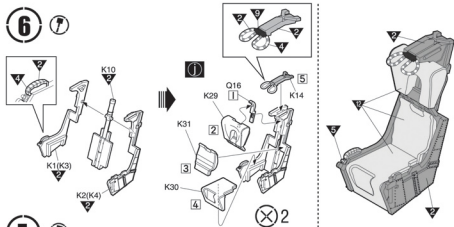
< RIGHT / 오른쪽 >



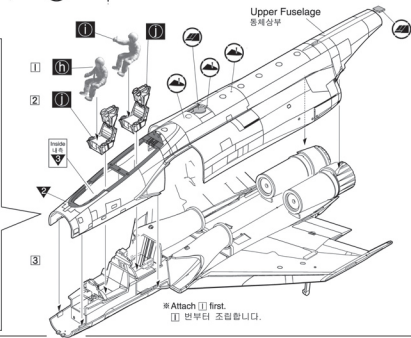
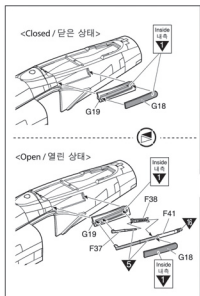
5 



6 



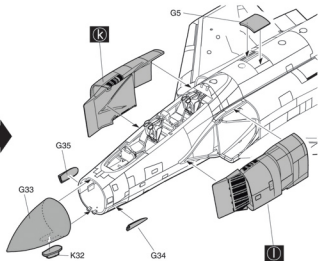
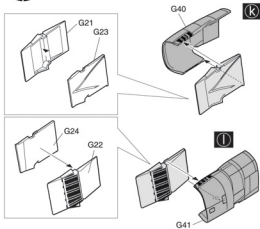
7 



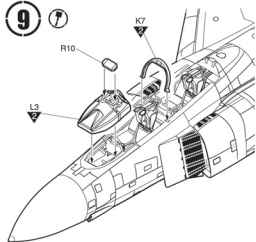
※ Attach **a** first.
a 번부터 조립합니다.



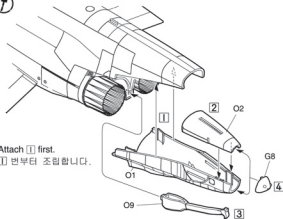
8 



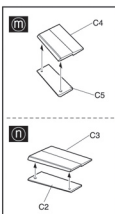
9 




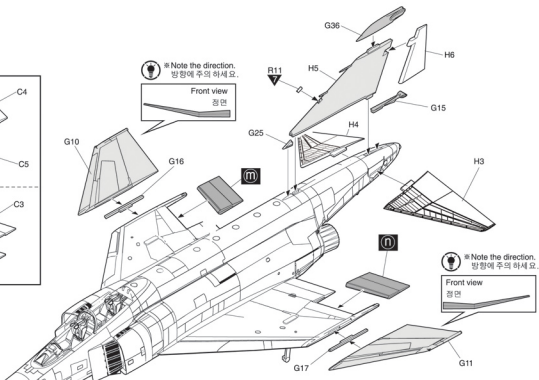
10 



11 

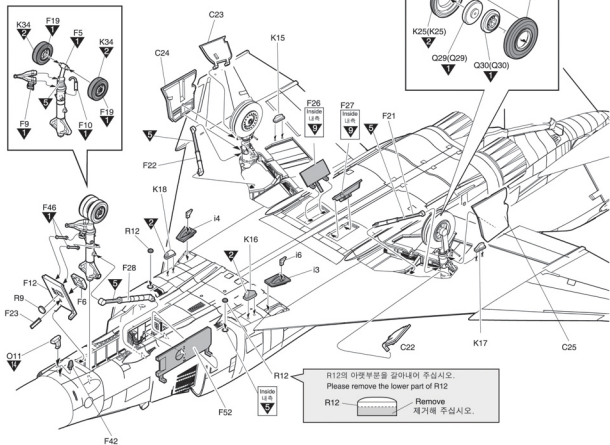


 * Note the direction.
방향에 주의 하세요.

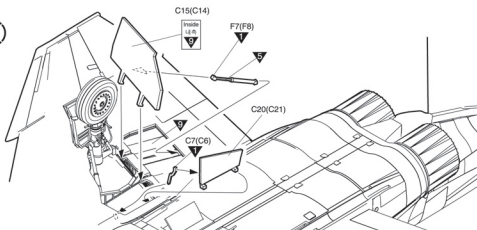


12 

※ () is opposite number.
()는 반대쪽 번호입니다.

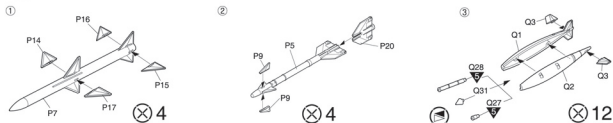


13 



14 

※ Mounting armed, refer to the separate manual
무장의 장착 방식은 첨부된 별도의 설명서를 참조하십시오.



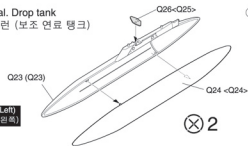
※ Mounting armed, refer to the separate manual

무장의 장착 방식은 첨부된 별도의 설명서를 참조하십시오.

< > is Left number

< > is Right number

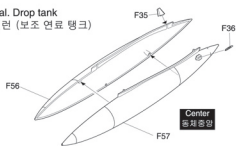
④ 370 gal. Drop tank
370갤런 (보조 연료 탱크)



Right (Left)
오른쪽 (왼쪽)

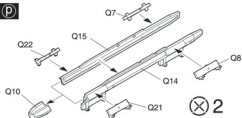
⊗ 2

⑤ 600 gal. Drop tank
600갤런 (보조 연료 탱크)



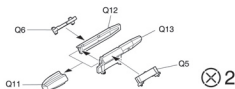
Center
중심방향

⑥ (P)



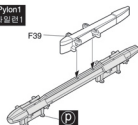
⊗ 2

⑦ (O)



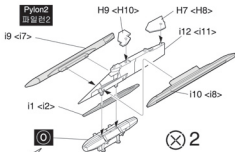
⊗ 2

Pylon1
파일린1



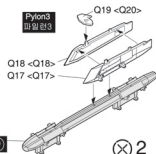
(P)

Pylon2
파일린2



⊗ 2

Pylon3
파일린3



⊗ 2

※ Do not use 4th mounting arms.
4번 무장장착에서는 사용하지 않습니다.

15 (P)

How to Painting of Figures
/ 인형 칠하는 방법

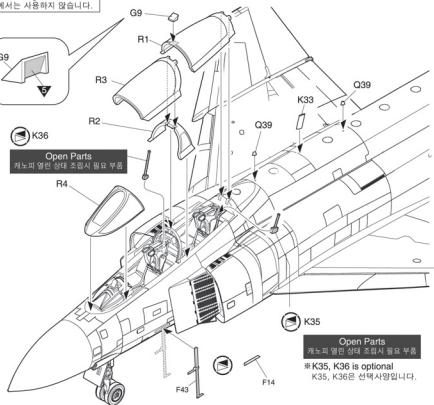


인형을 칠할 때는 피부에서 벗어나 신발등의 순서로 칠해주는 것이 효과적입니다.

When painting a figure that is effective to fill the order, such as clothes or shoes in the skin.

K36

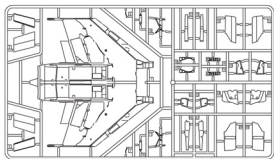
Open Parts
캐노피 열면 상대 조립시 필요 부품



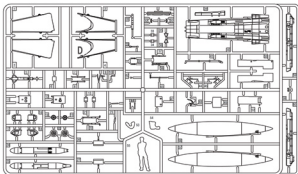
K35

Open Parts
캐노피 열면 상대 조립시 필요 부품
※ K35, K36 is optional
K35, K36은 선택사항입니다.

C

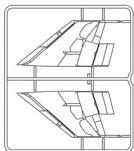


F

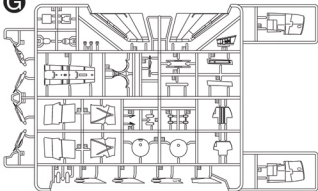


● Upper Fuselage / 동체상부

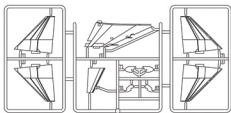
D



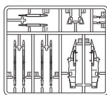
G



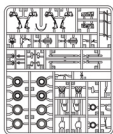
H



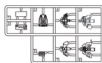
I



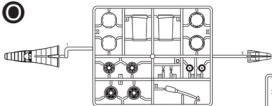
K



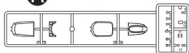
L



O

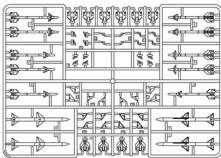


R

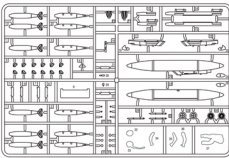


● Decal / 전사지

P X2



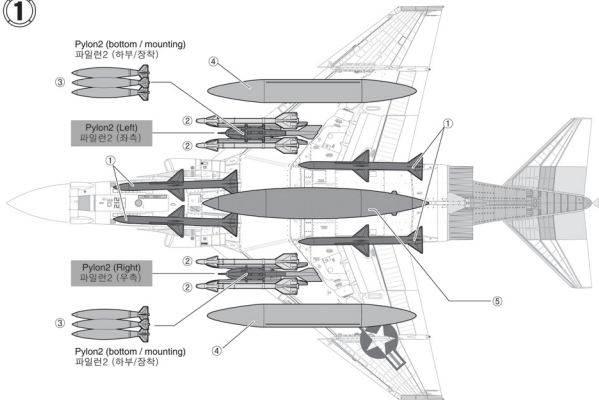
Q X2



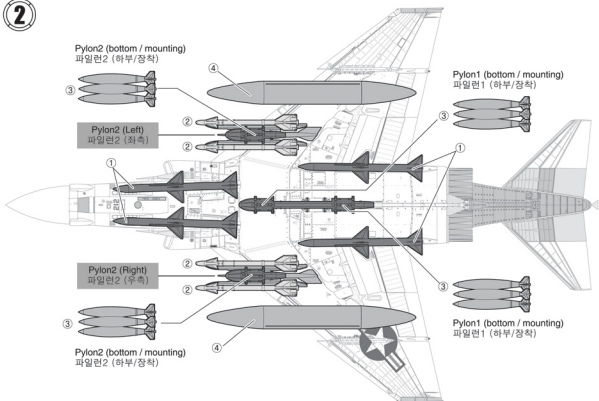
● Unused parts / 불필요 부품

F11, F13, F15, F16, F17, F18
 F20, F24, F25, F29, F 31, F32
 F33, F34, F58, F59, F60, G1
 G2, G3, G4, G6, G7, G9 X2
 G20, G26, G32, G37, G38
 G39, H1, H2, K12, K13, K19
 K20, K21, K22, K24, K26, K27
 K28, L1, L4, L5, O3, O10, O12
 P1, P2, P3, P4, P6, P7, P8
 P10, P11, P12, P13, P18, P19
 Q4, Q9 X1, Q19 X1, Q20 X1
 Q25 X1, Q26 X1, Q29, Q30 X2
 Q38, R5, R6, R7, R8, R11 X1

1



2



3

Pylon3 (bottom / mounting)
파일런3 (하부/장착)

Pylon3 (bottom / mounting)
파일런3 (하부/장착)

3

3

Pylon3 (Left)
파일런3 (좌측)

1

1

Pylon3 (Right)
파일런3 (우측)

3

3

Pylon3 (bottom / mounting)
파일런3 (하부/장착)

Pylon3 (bottom / mounting)
파일런3 (하부/장착)

4

4

Pylon2 (Left)
파일런2 (좌측)

2

2

1

1

Pylon2 (Right)
파일런2 (우측)

2

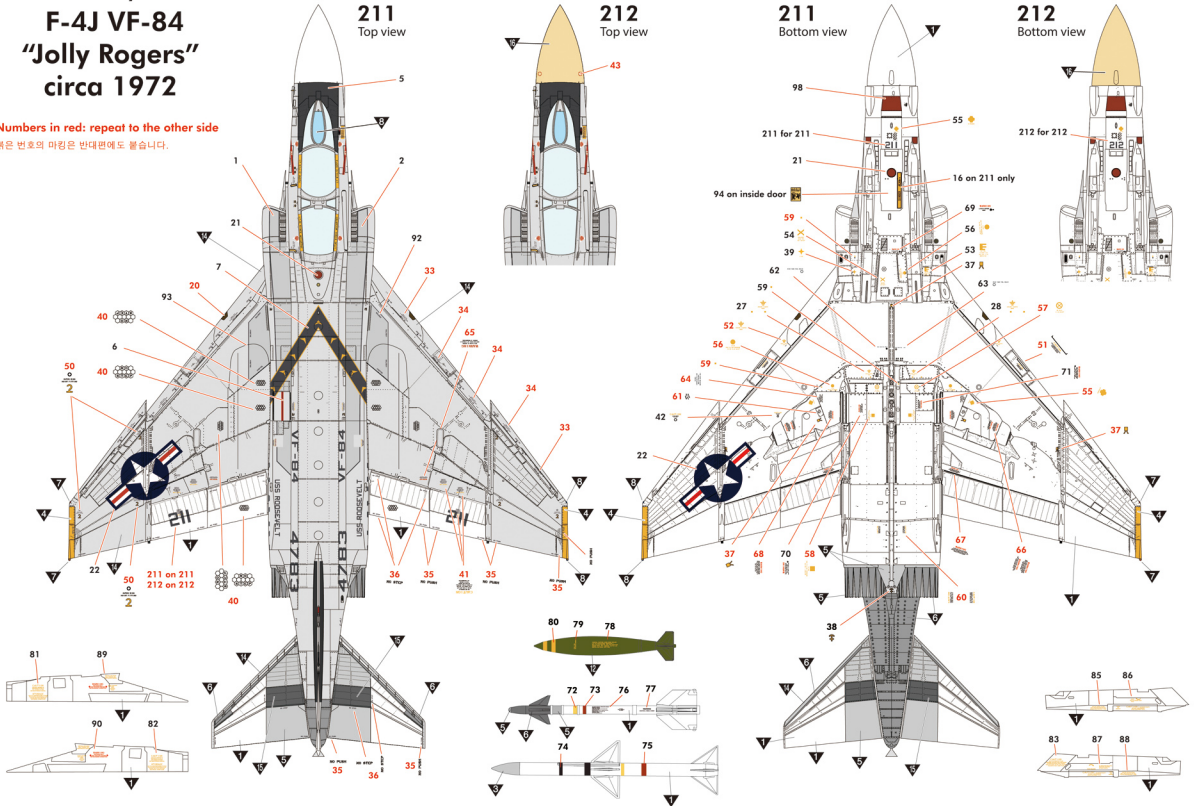
2

5

4

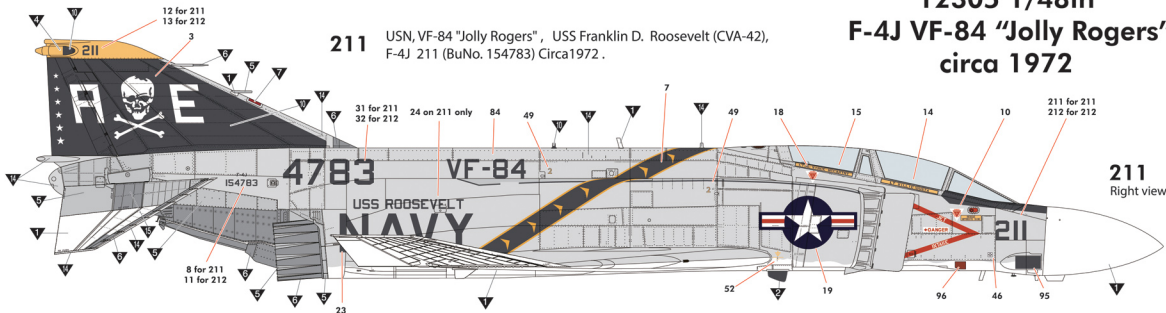
12305 1/48th
 F-4J VF-84
 "Jolly Rogers"
 circa 1972

Numbers in red: repeat to the other side
 붉은 번호의 마킹은 반대편에도 붙습니다.



12305 1/48th F-4J VF-84 "Jolly Rogers" circa 1972

211 USN, VF-84 "Jolly Rogers", USS Franklin D. Roosevelt (CVA-42),
F-4J 211 (BuNo. 154783) Circa 1972.

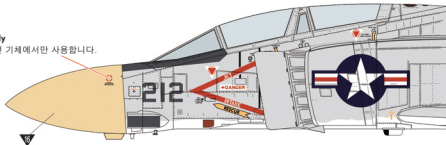


212

USN, VF-84 "Jolly Rogers"
USS Franklin D. Roosevelt (CVA-42),
F-4J 212 (BuNo. 155854), Circa 1972.

43(43) on 212 only
43 번 대일은 212번 기체에서만 사용합니다.

Cream radome on 212
212 기체는 크림색 레이돔입니다.
(나머지 컬러는 동일합니다.)



Crew name (14&15) for 211 only
14, 15번 대일은 211번 기체에서만 사용합니다.

24 on 211 only
24번 대일은 211번 기체에서만 사용합니다.

211
Left view

