

Distributed by
LJP INTERNATIONAL LTD
636 Alameda Dr. Carlinville, Illinois
Sui-King Sea Garden, Mexico
www.ljgroup.com

Agent in USA
SUN TRACK LTD
570 Windy Point Drive
Glendale Heights,
Illinois 60139 USA
sales@suntrackltd.com
www.ljgroup.com

Agent in JAPAN
LJP CORPORATION
2856-145 Sashogi, Nishi-ku,
Saitama-shi,
JAPAN 331-0047
sales@ljpcorporation.com
www.ljpara.jp

Manufactured by
Wondercolor Printing Co., Ltd.
End of Longquan Road, Longquan Road Industry
District, Chenghai, Shantou, Guangdong, China
www.killerbodyrc.com

Agent in other countries
KILLERBODY RC Co., Ltd.
Wenguan Road,
Chenghai, Shantou,
Guangdong, China (51500)
sales@killerbodyrc.com
www.killerbodyrc.com

killerbody™

SPECIALIZING IN RC MODEL BODIES



2015
NEW PRODUCT
CATALOGUE

KILLERBODY RC MODELS
WWW.KILLERBODYRC.COM



MARAUDER — P01-P10



WARRIOR — P11-P18

MITSUBISHI PAJERO EVO 1998 /
MITSUBISHI PAJERO EVO "Mitsubishi Q"
1998 Dakar Rally — P19-P24

FURIOUS ANGEL — P25-P28



Alfa Romeo 155 GTA — P29



Alfa Romeo 75 Turbo Evoluzione — P30



Lancia Delta HF Integrale 16V — P31

Lancia Beta Montecarlo
(1981 LM & 1979 Giro d'Italia) — P32

Lancia LC2 — P33-P34

1/10 Garage Series — P35-P38

Chassis for Display Series — P39

Upgrade Parts for 1/10 RC Car — P40-P43

Upgrade Parts for 1/10 RC Touring Car — P44-P45

Upgrade Parts for 1/10 RC Truck — P46

1/10 Scale Crawler Body

MARAUDER

Can be used with Axial SCX10 Chassis
(Long Wheelbase: 313mm Width: 220mm)

Killerbody's inspiration for MARAUDER originated from Land Rover Defender. As we know that it stands for tough, intrepid, mastering all manner of terrain, it couldn't be more suitable to apply it in rock crawler. The difficulty during the development of MARAUDER lied in the structure design. It was a huge challenge for Killerbody's development and design team to satisfy the classic and tough appearance with vacuum forming technology, which would be unprecedented in history. Finally, Killerbody successfully reproduced this body with our rich experience in body shell design and manufacturing. We believe that you will agree with our design philosophy if you see or touch the MARAUDER.

Undoubtedly, Killerbody's consistent expression techniques of details can be found in many aspects, including cockpit, metal net, special roll bar, roof rack and enhanced light. What's more important is that we are not only working on the appearance, because this body has exceeded the ordinary RC body in many aspects, such as appearance design, structure design, and the complexity of production materials, etc. In addition, we also take its practicability into consideration. The tote box is used for balancing the weight of the climbing car by putting useful accessories in it and laying the box in the truck bed, thus maintaining the gravity when passing through undulant slopes and greatly improving the car performance.

People may say that the intensity of Polycarbonate body shell is not as good as that of hard plastic body shell. Don't worry.

Killerbody have thought about that already, and Plastic Body Reinforcing Plate has been tailored particularly for it to solve the intensity problem of body shell. Moreover, other upgraded accessories are very powerful as well. Now, you can start your adventurous journey with MARAUDER!





All Kinds of Modified Upgrade Parts



Scale Pedal & Exhaust Pipe & Rubber Fender



Luggage Net



Scale Cockpit & Dashboard



Camouflage Net



Military Finished Body

Can be used with Axial SCX10 Chassis

(Long Wheelbase: 313mm Width: 220mm)

1/10 Scale Crawler Body

MARAUDER

48345
Decorative Ladder

48438/48439/48440/48441
Chromed Plastic Tote Box

48515
Cloth Cable Ties

48430 Plastic Oxygen Bottle Set

48432 Luggage Net

48426
Nylon Luggage Rack & Chimney

Nylon Anti-roll Bar
Decorative Accent Light
Stainless Steel Cockpit Net Screen
Scale Cockpit & Dashboard

Wing Mirror

Side Radiator Grid

MARAUDER

Can be used with Axial SCX10 Chassis

(Long Wheelbase: 313mm Width: 220mm)

48510 Accent Light W/LED Unit Set

48426
Nylon Luggage Rack & Chimney

48052
Fire-extinguisher

Scale Pedal

Scale Exhaust Pipe

Scale Draw Gear

Scale Chromed Grill

48350/48361 Hooks & Rings Set (Diecast alloy)

48349 Decorative Strander

Scale Headlight

Scale Oilcan

Rubber Fender

Scale Taillight

48429 Plastic Jerry Can



All Kinds of Modified Upgrade Parts

48256 Moveable Outdoor Tooling Set

48270/48271
Stainless Steel Modified Air Intake Mesh



Scale Cockpit & Dashboard

MARAUDER



Clear Body



Trashed Body (Silver) (Pre-set Light Locks assembled)



Trashed Body (Silver) (Pre-set Light Locks assembled)



Trashed Body (Dark Blue) (Pre-set Light Locks assembled)



Trashed Body (Yellow) (Pre-set Light Locks assembled)



Trashed Body (Green) (Pre-set Light Locks assembled)

1/10 Scale Crawler (MARAUDER & WARRIOR)



Aluminum Alloy Heighten Body Mounts (front)



Transparent Light Lenses

EXCLUSIVE PARTS



Wylon Anti-rub Bar



Stainless Steel Cockpit Net Screen



Rubber Fender



Cramped Light Bucket & Grill



Plastic Body Reinforcing Plate



Plastic Cockpit Set

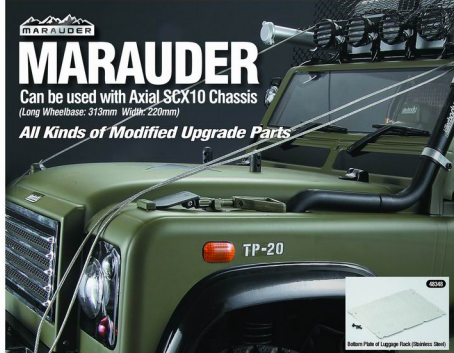
1/10 Scale Crawler Body
MARAUDER
Can be used with Axial SCX10 Chassis
(Long Wheelbase: 313mm Width: 220mm)



MARAUDER

Can be used with Axial SCX10 Chassis
(Long Wheelbase: 313mm Width: 220mm)

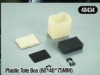
All Kinds of Modified Upgrade Parts



Chromed Plastic Tote Box for Weight Balance



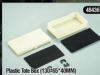
Black Plastic Jerry Can Set



Plastic Tote Box (60*40*75MM)



Plastic Tote Box (90*50*75MM)



Plastic Tote Box (130*60*40MM)



Chromed Plastic Tote Box Finished Type (140*90*25MM)



Cloth Cable Ties (250MM)



Cloth Cable Ties (190MM)



Fire-extinguisher



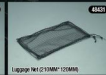
Toolbox w/ Tool Set



Decorative Ladder



Luggage Net (330MM*250MM)



Luggage Net (210MM*120MM)



Bottom Plate of Luggage Rack (Stainless Steel)



Mylin Luggage Rack & Chimney



Bottom Plate of Luggage Rack (Stainless Steel)



Plastic Oxygen Bottle Set



Roof Luggage Rack (Double Layer)



Accent Light W/LED Unit Set



Accent Light W/LED Unit Set



Accent Light W/MSD LED Unit Set (19 LEDs)



LED Light Systems w/Control Box (12 LEDs)



Plastic Tote Box (140*90*15MM)



Chromed Plastic Tote Box Finished Type (80*50*75MM)



Chromed Plastic Tote Box Finished Type (80*50*75MM)



Chromed Plastic Tote Box Finished Type (130*60*40MM)



Moveable Outdoor Tooling Set



Decorative Stand



Hooks & Rings Set (Decal alloy)



Hooks & Rings Set (Decal alloy)



Camouflage Net (1.5M*1.5M)



Chromed Steel Meshed Tray (48271)



Chromed Steel Meshed Tray (48272)



Metal Luggage (250MM)

1/10 Scale Crawler Body WARRIOR

The Warrior was no doubt inspired by the old Jeep during the World War II. But fans know that the real prototype is M151 MUTT that in 1953 developed by the Ford Motor Company and the U.S. Army. It looked small, compact, rugged, cassette load-carrying structure. These features allowed it to outpoint all other submitted replacement vehicles for the ageing jeep. And it is widely used in the Korean and Vietnam Wars.

Killerbody reproduced this cassette load-carrying structure, and the actual effect is very good, we just make how to reproduce this structure and make it like the real appearance. 1.5MM thick PC material is reasonable allocated to the front, middle, and rear part of this car, and the concave-convex in balance design which not only like the real chair structure, but also make the strength of the whole body shell not lose to any other hard plastic body shell, what's important is don't forget it use PC-material. And like Marauder, Killerbody prepare special anti-rolle bar, many related details and upgrade parts, such as luggage rack, accent light, jerry can, roof tent, installation parts for spare tire and so on. People who like the crawler now can drive a Warrior to fight, or when you see Warrior, it can inspire you brave fight hearts.



Camouflage Net



48454 Roof Tent (cloth)



Cassette Load-carrying Structure



Plastic Jerry Can



Scale Cockpit & Dashboard



Can be used with Axial SCX10 Chassis
(Long Wheelbase: 313mm Width: 220mm)

1/10 Scale Crawler Body
WARRIOR
Can be used with Axial SCX10 Chassis
(Long Wheelbase: 313mm Width: 220mm)



All Kinds of Modified Upgrade Parts

1/10 Scale Crawler Body

WARRIOR

Can be used with Axial SCX10 Chassis

(Long Wheelbase: 313mm Width: 220mm)



1/10 Scale Crawler (MARAUDER & WARRIOR)

48548



Aluminum Alloy Heighten Body Mounts (front)

All Kinds of Modified Upgrade Parts



48443



Translucent Light Lenses

48445



Chromeed Light Buckets

48450



Black Plastic Parts



48442



Clear Body

48443



Painted Body (White, Light Buckets) (not sold)

48444



Painted Body (Red, Light Buckets) (not sold)

48445



Painted Body (White, Light Buckets) (not sold)

48446



Painted Body (Green, Light Buckets) (not sold)

48447



Painted Body (Yellow, Light Buckets) (not sold)

EXCLUSIVE PARTS

48451



Nylon Anti-roll Bar

48453



Plastic Headlight Set

48454



Rock Fender

1/10 Scale Crawler Body

WARRIOR

Can be used with Axial SCX10 Chassis

(Long Wheelbase: 313mm Width: 220mm)



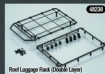
Hylen Luggage Rack & Chelney



Bottom Plate of Luggage Rack (Stainless Steel)



Plastic Oxygen Bottle Set



Roof Luggage Rack (Double Layer)



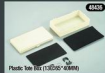
Bottom Plate of Luggage Rack (Stainless Steel)



Accent Light W/LED Unit Set



Accent Light W/LED Unit Set



Plastic Toe (130*150*40MM)



Chromed Plastic Toe (130*150*40MM)



Cloth Cable Ties (2500MM)



Cloth Cable Ties (1600MM)



Hooks & Rings Set (Diecast alloy)



Toolbox w/ Tool Set



Luggage Net (530MM*250MM)



Luggage Net (710MM*120MM)



All Kinds of Modified Upgrade Parts



Accent Light W/SMO LED (18 LEDs)



LED Light Systems w/Control Box (8 LEDs)



Black Plastic Army Can Set



Installation Parts for Spare Tire



Fire-extinguisher



Moveable Outdoor Cooling Set



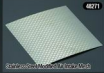
Decorative Stand



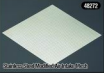
Hooks & Rings Set (Diecast alloy)



Camouflage Net (1.5M*1.5M)



Plastic Net (1.5M*1.5M)



Plastic Net (1.5M*1.5M)



Metal Explosive (250MM)

1/10 Extreme Terrain Truck

MITSUBISHI PAJERO EVO "Mitsubishi Oil" 1998 Dakar Rally

Official Licensed Product

MITSUBISHI PAJERO evo "Mitsubishi Oil"

1998 Dakar Rally - #204 KAHINOZUKA A+/H.MAGNE O+



1/10 BODY SHELL

Fit for Traxxas 1/10 Telluride 4X4 Truck

Fit for Tamiya 1/10 HILUX HIGH-LIFT 4X4 Truck

Mitsubishi Pajero is a sport-utility vehicle developed and manufactured by Mitsubishi Motors. In 1997, Mitsubishi launched a special road car to celebrate their Dakar rally success, called the Pajero Evolution, it was to form the basis for the 1998 Mitsubishi Dakar rally effort. In the same year, Jean-Pierre Fontenay, driving a Mitsubishi Pajero EVO, won the Paris-Dakar Rally.

Killerbody developed this product to reproduce this classic car, believing that people who love Dakar Rally will like this classic car, which fit for two special chassis of Traxxas 1/10 Telluride 4X4 Truck and Tamiya 1/10 HILUX HIGH-LIFT 4X4 Truck. Besides Killerbody's consistent adherence to the original products, the disassembling method used in the front and rear bumpers makes it looks more authentic with a stronger tactile impression. The rear wing made of piecemeal plastic parts, regardless of the cost, enhances the sense of reality. Besides, the bracket of rear light is made into ABS plastic frames. All these characteristics has reproduced the MITSUBISHI PAJERO EVO 1998 vividly and incisively.

Meanwhile, we launched many upgraded parts for this body. Killerbody's product design philosophy is to make the upgrade parts useful to as many products as possible, rather than only used on a single product. If you have paid attention to our products before, now you will gradually find that some of our previous upgraded parts seem to be designed ahead of time for our current bodies, and this is the in-advance design of Killerbody.



1/10 Extreme Terrain Truck

MITSUBISHI

PAJERO EVO 1998

1/10 BODY SHELL

Official Licensed Product

(1/10 MITSUBISHI PAJERO EVO 1998)
Fit for Traxxas 1/10 Telluride 4X4 Truck

48040



Aluminum Alloy Heighten Body Mounts (front)

(1/10 MITSUBISHI PAJERO EVO 1998)
Fit for Tamiya 1/10 HILUX HIGH-LIFT 4X4 Truck

48050



Aluminum Alloy Heighten Body Mounts (rear)

Fit for Traxxas 1/10 Telluride 4X4 Truck
Fit for Tamiya 1/10 HILUX HIGH-LIFT 4X4 Truck

Scale LED Unit Set System



Plastic Rear Wing



Upgrade Parts: 48426 Nylon Luggage Rack (Optional)
48440 Chrome Plastic Gate Box



Upgrade Parts: 48450 (Installation Parts for Spare Tire
48440 (Gate Box)
48440 (Chrome Plastic Gate Box)
48440 (Chrome Plastic Gate Box)



Upgrade Parts: 48450 (Installation Parts for Spare Tire)
48440 (Gate Box)
48440 (Chrome Plastic Gate Box)

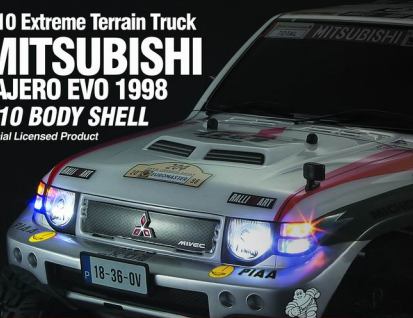


1/10 Extreme Terrain Truck

MITSUBISHI PAJERO EVO 1998

1/10 BODY SHELL

Official Licensed Product



All Kinds of Modified Upgrade Parts



FURIOUS ANGEL

When you first saw "FURIOUS ANGEL", you must be said in your heart that it is crazy. Yes, it is enough flaunt and crazy. Furious Angel was inspired by the popular vans. The car is wildly popular to customize for cruising and is designed from the ground up to match today's active lifestyles. Its spacious interior inspired many people to modify this like your living room or bedroom featuring full out bars, couches and/or beds inside.

Furious Angel is base on the traditional commercial car with Japanese car culture "vanning". Of course you can't forget the crazy vans. These vans that have been modified to the point where they look less like cars and more like the giant robots seen in cartoon films. Although you can spot them from a mile away with all their fins and spoilers, you can usually hear them well before you see them. The drivers of these fans like to install the loudest possible exhaust, big spoilers, wings, body kits, stereo system and a unique set of taillights that is almost crazy!

1/10 BODY SHELL

This body can be used with 1/10 electronic touring car chassis (Long Wheelbase: 257mm Width: 195mm)



Furious Angel in addition to exaggerate and crazy appearance, Killerbody's design team also design the cockpit for it specifically. Except to make it looks more truly, the design of the cockpit also can enhance the strength of the body. If use our aluminum alloy stealth body mounts, then install on the chassis will become more simply and keep the integrity of the body.

FURIOUS ANGEL

Much more stronger: 1.5mm thickness

Crazy and Exaggerate Spoiler & Tail & Bodykit

Silver Mirror Decal (Pattern Printed)



Upgrade Parts: Exhaust Pipe

LED Light System w/ Control Box (12 LEDs)

Wing Mirror W/LED Unit Set

FURIOUS ANGEL**1/10 BODY SHELL**

This body can be used with 1/10
electronic touring car chassis
(Long Wheelbase: 257mm Width: 195mm)



Clear Body

Finished Body Shell (Printed)
High Vacuum AssemblyFinished Body Shell (Printed)
High Vacuum Assembly

Modified Parts Set



Chrome Light Buckle



Cockpit Set

Cockpit Set (Printed)
Finished TypeCockpit Set (Printed)
Finished Type**UPGRADE PARTS**Exhaust Pipe
(Can be installed with LED)Caliper Brake Disc (ZINC Aluminum)
2 Bigger & 2 Smaller

Aluminum Body Wheel

Drift Tire
4Pcs. (48259)

Alfa Romeo 155 GTA

Official Licensed Product

* Fiat Official Licensed Product
** Produced under license of Fiat Group Automobiles S.p.A.
ALFA ROMEO, all associated logos and distinctive designs are property of the Fiat Group Companies.
The body designs of the Alfa Romeo cars are protected as Fiat Group Automobiles S.p.A. property.



1/10 BODY SHELL

This body can be used with 1/10 electronic touring car chassis (Long Wheelbase: 257mm Width: 195mm)

More Detail



EXCLUSIVE PARTS



29 WWW.KILLERBODYRC.COM



1/10 BODY SHELL Alfa Romeo 75 Turbo Evoluzione

Alfa Romeo 75 Turbo Evoluzione - #1 LARINI/BIASON/SIMERO

Official Licensed Product

* Fiat Official Licensed Product
** Produced under license of Fiat Group Automobiles S.p.A.
ALFA ROMEO, all associated logos and distinctive designs are property of the Fiat Group Companies.
The body designs of the Alfa Romeo cars are protected as Fiat Group Automobiles S.p.A. property.



This body can be used with 1/10 electronic touring car chassis (Long Wheelbase: 257mm Width: 195mm)

More Detail



EXCLUSIVE PARTS



KILLERBODY RC MODELS



30

Lancia Delta HF Integrale 16V

Lancia Delta HF Integrale 16V
- #7 DAURIOLO A+B, OCELLI A+
- #1 Ruben Dario Arh+ / Wita Franco Arh+

1/10 BODY SHELL

Official Licensed Product
This body can be used with 1/10
electronic touring car chassis
(Long Wheelbase: 257mm Width: 195mm)



First Official Licensed Product
Produced under license of Fiat Group Automobiles S.p.A.
All rights of intellectual property and distinctive designs are
property of the Fiat Group Companies.
The body designs of the Lancia cars are presented as
Fiat Group Automobiles S.p.A. property.

More Detail



EXCLUSIVE PARTS



Lancia Beta Montecarlo (1981LM & 1979 Giro d'Italia)

Official Licensed Product

First Official Licensed Product
Produced under license of Fiat Group Automobiles S.p.A.
Lancia, all associated logos and distinctive designs are
property of the Fiat Group Companies.
The body designs of the Lancia cars are presented as
Fiat Group Automobiles S.p.A. property.

1/10 BODY SHELL

This body can be used with 1/10
electronic touring car chassis
(Long Wheelbase: 257mm Width: 195mm)

More Detail



EXCLUSIVE PARTS



Lancia LC2

Official Licensed Product

* Fiat Official Licensed Product
Produced under license of Fiat Group Automobiles S.p.A.
Lancia, all associated logos and distinctive designs are
property of the Fiat Group Companies.
The body designs of the Lancia cars are protected as
Fiat Group Automobiles S.p.A. property.

More Detail



Lancia LC2

- #4 M. ALBORETO/R. PATRESE

- #5 T. FABI/P. GHINZANI

1/12 Electric Leman Car

Fit for Kyosho/Yokomo 1:12 Electric Racing Car



Clear Body



Finished Body (Rally racing) (Printed)
Light buckets assembled

EXCLUSIVE PARTS



Decal Sheet



Plastic Parts Set

UPGRADE PARTS



Driver Set



LED Light System w/Control Box (8 LEDs)

1/10 Garage Series

CNC Aluminum Alloy & Resin & Acrylic

killerbody

Product Introduction:

1. Almost all the equipments included as you see in the actual garage.
2. Garage Wall / Car Lift / Tire Changer / Engine Analyzer / Tyre Inflator / Fire-extinguisher / Four-wheel Aligner / Lube Oilcan / Tool Cabinet / Lifting Jack / Tire Rack / Toolbox with Tool Set.
3. Not only the car lift but also other parts with turnable function.
4. Size: 685mm x 760mm x 365 mm.



2015
1/10 Garage Series
Launching Now

More Equipment Detail





Including

- 1-48543 Finished garage wall (grey painted, acrylic)
- 2-Decorative sticker decal
- 3-Assembled including:
 - Finished garage full set
 - 48535 Car lift (CNC aluminum alloy & resin)
 - 48536 Tire changer (resin)
 - 48537 Engine analyzer (resin)
 - 48538 Tire inflator (resin)
 - 48539 Fire extinguisher (resin)
 - 48540 Four-wheel lifter (resin)
 - 48541 Lube oilcan (resin)
 - 48542 Tool cabinet (resin)
 - 48545 Lifting jack (resin)
 - 48521 Tire rack (Aluminum alloy & acrylic)
 - 48522 Tireless w/ Tool set
 - 4-Other small parts
 - 5-Installation parts
 - 6-Instruction sheet

48546

Garage Full Set Finished Type



48543

Garage Wall (Acrylic)



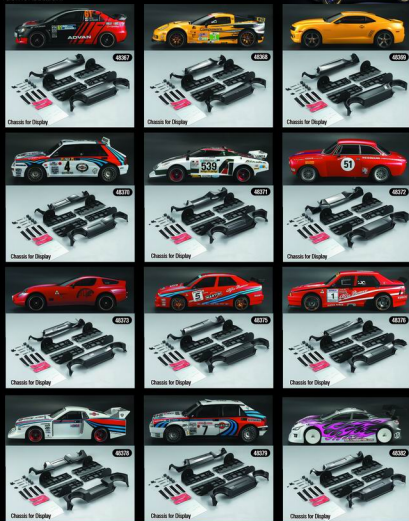
48535

Car Lift (CNC aluminum alloy & Resin)



1/10 Chassis for Display

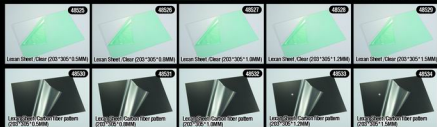
On the basis of previous displaying chassis, Killerbody have redesigned a special displaying chassis that is easier to install and use, and added PVC supporting shell especially made for touring car body, thus eliminating the complicated body post installation procedure and giving your car a better demonstration.



Modified Upgrade Parts

Lexan Sheet

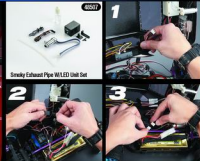
It looks like the real carbon fiber printing, which can maximize the application in various modifications with various thicknesses.



Upgrade Parts for 1/10 RC Car

Smoky Exhaust Pipe W/LED Unit Set

This is an electronic smoky exhaust pipe, which simulates the production of smoke of a real car when the accelerator is pressed. Figure A-B-C show the gradually increasing effects. Its simple installation is demonstrated in Figure 1. Fix the product to the car body with double-sided tape, and link the connecting wire with channel 2 (for moving forward and backward) of the receiver on the chassis as showed in Figure 2, and plug the power cord into the balancing charging port of the batteries in the chassis. Then the installation is finished.



Upgrade Parts for 1/10 RC Car

When Killerbody first designed the ABS tote box, they only thought about balancing the weight of rock crawler body and improving the passing performance. Yet it has brought us unexpected pleasant surprise in the later stage of product design. We found it actually exceeded the scope of RC because it can hold various daily miscellaneous items other than accessories and tools. Finally, Killerbody decided to make it more convenient and practical with a lock catch that is easy to open. In addition, we launched final products with mirror electroplating so that you can use it freely.



Plastic Tote Box



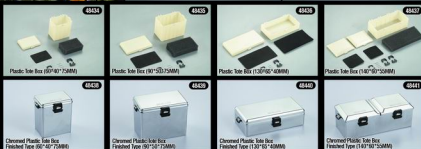
For balancing the weights of car body.



For holding cosmetics.



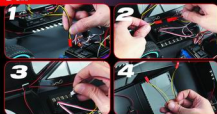
For holding living goods.



Upgrade Parts for 1/10 RC Car

LED Unit Set Series

This is the SMD chassis light of a newly launched LED light series by Killerbody. The installation is quite simple. You just need to stick it onto the car body. As shown in Figure 1, it can be plugged into the receiving control box of the chassis directly but only for a short time period, because the heat produced by large amounts of light would result in the shedding of reversed glue. The correct way is to use Killerbody's connecting wire to attach with the red plug of SMD LED light, as shown in Figure 2, and then plug it into the LED light control box as Figure 3 displays, this is the best way. The SMD LED lights could be connected in parallel as in Figure 4 when the ports of LED light control box are not enough.



Cloth Cable Ties



Cloth Cable Ties (200MM)



Cloth Cable Ties (160MM)

Metal Euphroe



Metal Euphroe (250MM)



Metal Euphroe (140MM)

Toolbox & Tool Set



Toolbox w/ Tool Set



Tool Set

Upgrade Parts for 1/10 RC Car

Engine Series

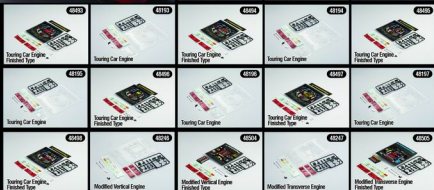
A series of Scale Engines newly launched by Killerbody, which including vertical and transverse types for touring car and modified car. You will feel it incredible when you open the engine bonnet and see so scale engine parts inside. Even though it look very inconspicuous, Killerbody pay much attention on developing it, especially in designing out the curve 3D drawing. Being passionate, with Killerbody's core of producing more real look, high performance finished products, customers can get two different types for selection: one is Clear type DIY by customers, one is Finished type. Once you get a Finished Engine, just trim the outskirts to fit your own RC car and assemble it with 3M double-sided tape, a scale car appears!

Engine with color printed
Scale Details
Much More 3D Effects
Much More Metallic Effects



Vertical Engine

Transverse Engine



Upgrade Parts for 1/10 RC Touring Car

Cockpit & Anti-role Bar

1/10 touring car cockpit set series is another product line uniquely designed and developed by Killerbody. Different from previous, the anti-role bar specially designed for cockpit can adjust the dimension you need according to the different body shell. It looks like a real cockpit when it assembled with RC car driver and other detail parts. The rear-engine cockpit set was designed considering many RC cars using rear-engine; therefore, a lot of factors have been taken into consideration by Killerbody team in earlier development & design stage. Because it is a universal product, what we do in the design is to maximize its universality.



Adjustable Anti-role Bar
Universal Cockpit Set
Rear-engine Cockpit Set



Upgrade Parts for 1/10 RC Touring Car

Stealth Body Mounts (Aluminum Alloy)

The body post has been elongated for use in the car body of both tall and dwarf 1:10 touring cars, as displayed in Figure A-B, one used on the top and one in the back. As shown in Figure 1, the body post could be installed in the original place of the chassis, or it can be changed into a metal post. As shown in Figure 2, when the body post is installed backward, it will connect with the back of car body. As shown in Figure 3, when the body post is installed forward, it will connect with top of the car body, which is quite simple. The body post and car body are fixed connected with strong magnets, requiring some external force to remove the body.



Aluminum Alloy Wheel Series



Tire Rack



Bodyshell Basic Plastic Parts Carbon Fiber Pattern

It looks like an omnibearing pattern attached on the product with real carbon fiber printing, seeming like a real carbon fiber board, which make your beloved car distinctive.



Upgrade Parts for 1/10 RC Truck

Black Plastic Jerry Can Set



Plastic Oxygen Bottle Set



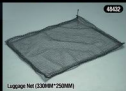
Nylon Luggage Rack & Chimney



Camouflage Net



Luggage Net



Cockpit Set



Accent Light W/LED Unit Set

