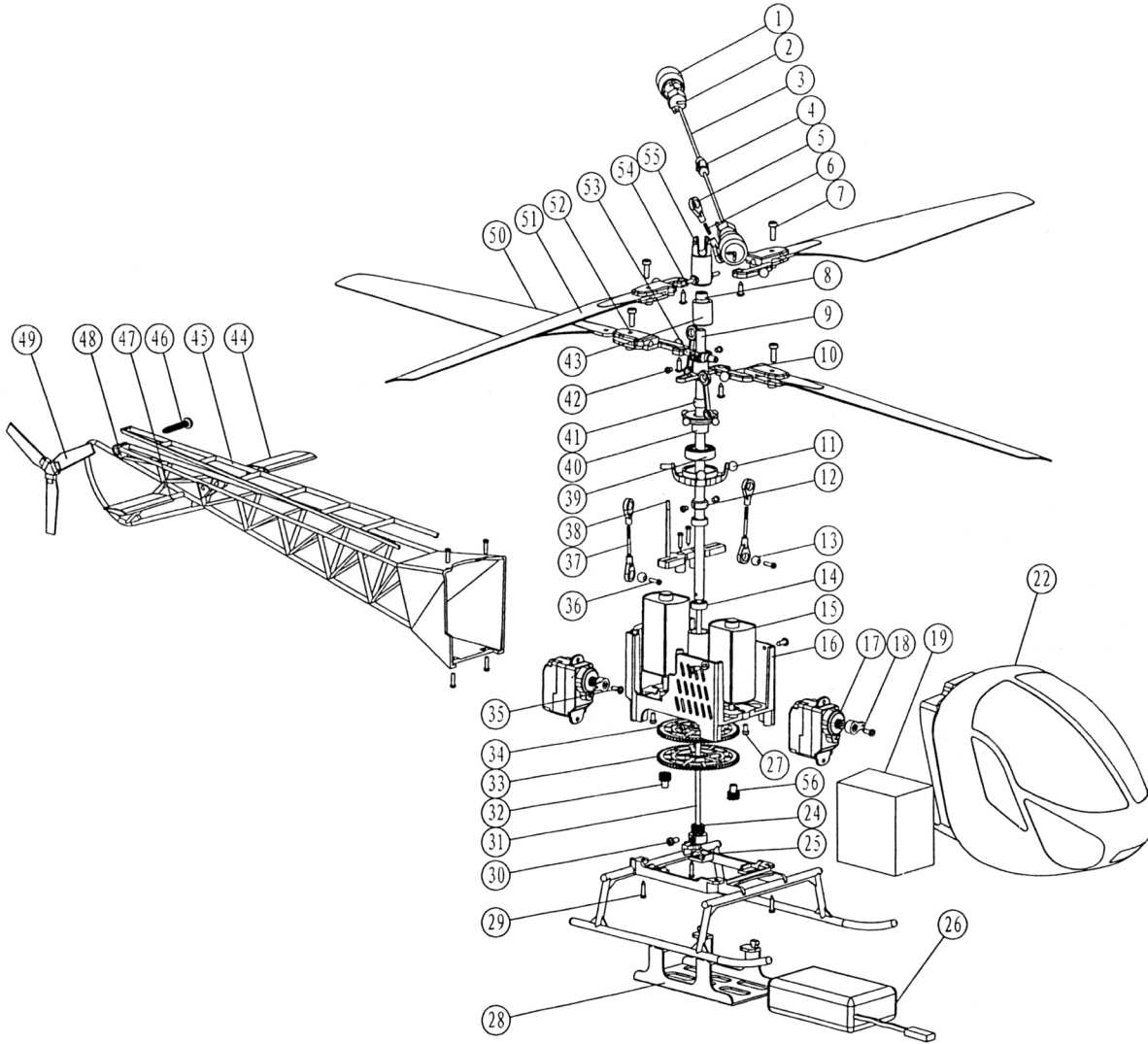


HM-5G4



| Part code | Description | Specificagion | Q'ty |
|-----------|-------------------------------|---------------|------|
| 001 | Balance Shaft Cover | | 2 |
| 002 | Balance Block | | 2 |
| 003 | Flybar Rod | | 1 |
| 004 | Flybar Rod Plastic Holder | | 1 |
| 005 | Ball Link Driver | | 6 |
| 006 | Double Ended Bolt | | 1 |
| 007 | Cross Recessed Pan Head Screw | M2*6 | 4 |
| 008 | Bearing | Φ2*Φ5*2.5 | 2 |
| 009 | Hollow Shaft | | 1 |
| 010 | Long Ball Linkage | | 2 |
| 011 | Swashplate | | 1 |
| 012 | Lock Sleeve | | 1 |
| 013 | Aluminum Ball | | 2 |
| 014 | Bearing | Φ4*Φ7*2.5 | 2 |
| 015 | Motor | | 2 |
| 016 | Main Frame A | | 1 |
| 017 | 7.6g-4 Servo | | 2 |
| 018 | Servo Bell Crank | | 2 |
| 019 | Receiver | | 1 |
| 020 | | | |
| 021 | | | |
| 022 | Canopy | | 1 |
| 023 | | | |
| 024 | Small Shaft Lock Sleeve | | 1 |
| 025 | Skid Landing Gear | | 1 |
| 026 | Battery | | 1 |
| 027 | Cross Recessed Pan Head Screw | M2*3 | 4 |
| 028 | Battery Box | | 1 |

| Part code | Description | Specificagion | Q'ty |
|-----------|---------------------------------------|---------------|------|
| 029 | Cross Recessed Pan Head Tapping Screw | PA1. 75*6 | 6 |
| 030 | Cross Recessed Pan Head Screw | M2*4 | 1 |
| 031 | Small Shaft | | 1 |
| 032 | Motor Gear | | 1 |
| 033 | Main Gear A | | 1 |
| 034 | Main Gear B | | 1 |
| 035 | Tapping Screw With Washer | PWA1. 7*4 | 8 |
| 036 | Cross Recessed Pan Head Tapping Screw | PB1. 4*5 | 6 |
| 037 | Ball Link Rod 1 | | 2 |
| 038 | Swashplate Guide Frame | | 1 |
| 039 | Bearing | Φ7*Φ13*4 | 1 |
| 040 | Inner Swashplate | | 1 |
| 041 | Copper Ball | | 1 |
| 042 | Cross Recessed Pan Head Tapping Screw | PB1. 4*2 | 6 |
| 043 | Shaft Sleeve | | 1 |
| 044 | Horizontal Stabilizer 1 | | 1 |
| 045 | Tail Truss 2 | | 1 |
| 046 | Cross Recessed Pan Head Tapping Screw | PA1. 7*10 | 1 |
| 047 | Horizontal Stabilizer 2 | | 1 |
| 048 | Tail Truss 1 | | 1 |
| 049 | Tail Rotor | | 1 |
| 050 | Main Blade 2 | | 2 |
| 051 | Main Blade 1 | | 2 |
| 052 | Main Blade Hoder | | 4 |
| 053 | T-Shape Holder | | 1 |
| 054 | Pilar Bolt | | 2 |
| 055 | Flybar Rod Connector | | 1 |
| 056 | Motor Gear 2 | | 1 |